



MLS 7021112 Lake Home

\$2,099,900

3,837 sq ft
4 bedrooms
3 baths

10382 Westwood Trail
Nisswa MN 56468

Waterfront: Gull

Status: Active

Description:

Experience lakeside living at its finest in this stunning A-frame home, peacefully nestled on a private 2.6-acre lot along the shores of beautiful Gull Lake. This architectural gem offers 4 spacious bedrooms, including 2 on the main level—one being a luxurious primary suite featuring a full ensuite bath with a jetted soaking tub. Both main-floor bedrooms open directly onto a 10' x 20' lakeside deck, the perfect place to enjoy serene morning views. The heart of the home showcases a dramatic two-story stone fireplace, anchoring an expansive open-concept living area where the kitchen, dining, and great room seamlessly flow together. Soaring ceilings and floor-to-ceiling windows frame breathtaking views of the lake. An 18' x 18' loft overlooks the main level, offering versatile space for additional sleeping quarters, a lounge, or a home office—all with a view of the water. The walkout lower level is an entertainer's dream, featuring a full wet bar, pool table area, and a cozy wood-burning fireplace. Step outside to a lakefront patio ideal for gatherings and relaxation. Practicality meets luxury with generous storage throughout, including a dedicated lake toy storage room, a spacious three-stall detached garage, and a 30' x 40' pole shed perfect for boats and outdoor equipment. Don't miss this rare opportunity to own a one-of-a-kind property on one of Minnesota's premier lake chains—where timeless design meets modern comfort in an unmatched natural setting.

Additional Details:

Year Built	1993
Lot Acres	2.63
Lot Dimensions	147 x 730 x 407 x 382
Garage Stalls	5
School District	116
Taxes	\$7,620
Taxes with Assessments	\$7,686
Tax Year	2025

Additional Features:

Fuel: Natural Gas **Heat:** Forced Air

Driving Directions:

From Brainerd take Hwy 371 N, Left on Co Rd 77, right on Westwood Trail, right on the white shed house and keep right. (The white shed house is located across the street from Sunline Summer House).



Affinity Real Estate Inc. participates in the Regional Multiple Listing Service of Minnesota, Inc Broker Reciprocity (sm) program, allowing us to display other broker's listings on our website. All properties are subject to prior sale, change or withdrawal.



Call Affinity Real Estate

218-237-3333

info@affinityrealestate.com



Affinity Real Estate - 600 Park Avenue South - Park Rapids MN 56470



website: www.AffinityRealEstate.com | email: info@affinityrealestate.com | office: 218-237-3333 | fax: 218-237-3377

Affinity
REAL ESTATE INC

\$2,099,900
MLS 7021112 Lake Home
10382 Westwood Trail
Nisswa MN 56468



website: www.AffinityRealEstate.com | email: info@affinityrealestate.com | office: 218-237-3333 | fax:218-237-3377



\$2,099,900
MLS 7021112 Lake Home
10382 Westwood Trail
Nisswa MN 56468



website: www.AffinityRealEstate.com | email: info@affinityrealestate.com | office: 218-237-3333 | fax: 218-237-3377

Affinity
REAL ESTATE INC

\$2,099,900
MLS 7021112 Lake Home
10382 Westwood Trail
Nisswa MN 56468



website: www.AffinityRealEstate.com | email: info@affinityrealestate.com | office: 218-237-3333 | fax:218-237-3377

Affinity
REAL ESTATE INC

\$2,099,900
MLS 7021112 Lake Home
10382 Westwood Trail
Nisswa MN 56468



website: www.AffinityRealEstate.com | email: info@affinityrealestate.com | office: 218-237-3333 | fax:218-237-3377

Affinity
REAL ESTATE INC

\$2,099,900
MLS 7021112 Lake Home
10382 Westwood Trail
Nisswa MN 56468



website: www.AffinityRealEstate.com | email: info@affinityrealestate.com | office: 218-237-3333 | fax:218-237-3377

Affinity
REAL ESTATE INC

\$2,099,900
MLS 7021112 Lake Home
10382 Westwood Trail
Nisswa MN 56468



website: www.AffinityRealEstate.com | email: info@affinityrealestate.com | office: 218-237-3333 | fax:218-237-3377

Affinity
REAL ESTATE INC

\$2,099,900
MLS 7021112 Lake Home
10382 Westwood Trail
Nisswa MN 56468



website: www.AffinityRealEstate.com | email: info@affinityrealestate.com | office: 218-237-3333 | fax:218-237-3377

Affinity
REAL ESTATE INC

\$2,099,900
MLS 7021112 Lake Home
10382 Westwood Trail
Nisswa MN 56468



website: www.AffinityRealEstate.com | email: info@affinityrealestate.com | office: 218-237-3333 | fax: 218-237-3377

Affinity
REAL ESTATE INC

\$2,099,900
MLS 7021112 Lake Home
10382 Westwood Trail
Nisswa MN 56468



website: www.AffinityRealEstate.com | email: info@affinityrealestate.com | office: 218-237-3333 | fax: 218-237-3377

Affinity
REAL ESTATE INC

\$2,099,900
MLS 7021112 Lake Home
10382 Westwood Trail
Nisswa MN 56468



website: www.AffinityRealEstate.com | email: info@affinityrealestate.com | office: 218-237-3333 | fax:218-237-3377

Affinity
REAL ESTATE INC

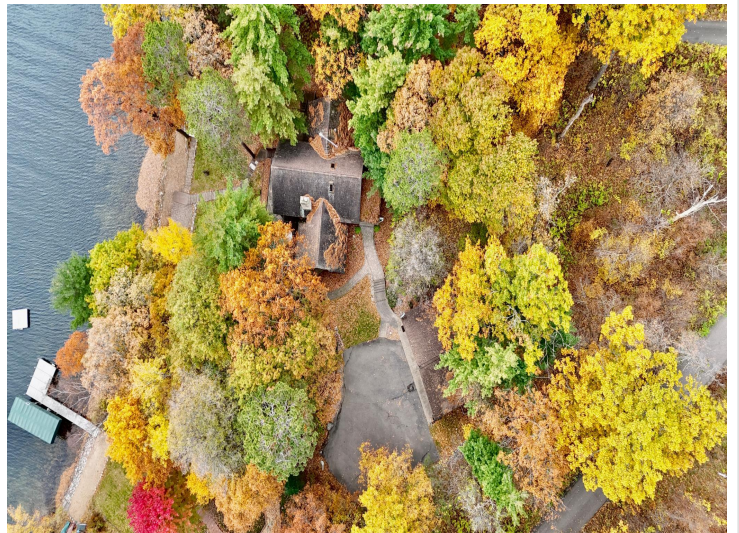
\$2,099,900
MLS 7021112 Lake Home
10382 Westwood Trail
Nisswa MN 56468



website: www.AffinityRealEstate.com | email: info@affinityrealestate.com | office: 218-237-3333 | fax:218-237-3377



\$2,099,900
MLS 7021112 Lake Home
10382 Westwood Trail
Nisswa MN 56468



website: www.AffinityRealEstate.com | email: info@affinityrealestate.com | office: 218-237-3333 | fax: 218-237-3377

Affinity
REAL ESTATE INC

\$2,099,900
MLS 7021112 Lake Home
10382 Westwood Trail
Nisswa MN 56468



website: www.AffinityRealEstate.com | email: info@affinityrealestate.com | office: 218-237-3333 | fax:218-237-3377



\$2,099,900

MLS 7021112 Lake Home
10382 Westwood Trail
Nisswa MN 56468