



MLS 7021182 Commercial

\$299,000

111 1st Avenue
Aldrich MN 56434

Status: Active

Description:

Incredible commercial opportunity with unbeatable visibility right off Highway 371 in Aldrich, ideally located between Wadena and Staples. This expansive 7,100 square foot property is full of potential for an entrepreneur, investor, or business owner ready to bring a vision to life.

Formerly home to a well-known restaurant and entertainment venue, the building still features a spacious bar area, seating areas, a large stage, and multiple flexible spaces that could easily be transformed into an event center, restaurant concept, live music venue, retail marketplace, or divided into multiple tenant or vendor spaces. While the commercial kitchen has been removed, some restaurant elements remain, including a walk-in refrigerator and a large fireplace once used for roasting.

The property also includes an office, abundant storage throughout, multiple bathrooms, and a huge parking lot with outdoor space that offers even more opportunity — perfect for outdoor events, seasonal markets, or future expansion.

With high traffic exposure, a long-standing presence in the community, and endless ways to reimagine the space, this is a rare chance to own a truly unique commercial property in a prime location.

Bring your ideas and your vision — opportunities like this don't come along often. Schedule your private showing today!

Additional Details:

Year Built	1950
Lot Acres	0.57
Lot Dimensions	179x60x149x78x217
School District	1062
Taxes	\$3,244
Taxes with Assessments	\$3,608
Tax Year	2025

Additional Features:

Electrical: Array Heat: Baseboard, Forced Air Sewer: Municipal Sewer Water: Drilled, Well Air Conditioning: Central
Listed By:
Coldwell Banker Realty

Driving Directions:

Affinity Real Estate Inc. participates in the Regional Multiple Listing Service of Minnesota, Inc Broker Reciprocity (sm) program, allowing us to display other broker's listings on our website. All properties are subject to prior sale, change or withdrawal.



Call Affinity Real Estate

218-237-3333

info@affinityrealestate.com



Affinity Real Estate - 600 Park Avenue South - Park Rapids MN 56470



website: www.AffinityRealEstate.com | email: info@affinityrealestate.com | office: 218-237-3333 | fax: 218-237-3377

Affinity
REAL ESTATE INC

\$299,000
MLS 7021182 Commercial
111 1st Avenue
Aldrich MN 56434



website: www.AffinityRealEstate.com | email: info@affinityrealestate.com | office: 218-237-3333 | fax: 218-237-3377



\$299,000
MLS 7021182 Commercial
111 1st Avenue
Aldrich MN 56434



website: www.AffinityRealEstate.com | email: info@affinityrealestate.com | office: 218-237-3333 | fax: 218-237-3377

Affinity
REAL ESTATE INC

\$299,000
MLS 7021182 Commercial
111 1st Avenue
Aldrich MN 56434



website: www.AffinityRealEstate.com | email: info@affinityrealestate.com | office: 218-237-3333 | fax: 218-237-3377

Affinity
REAL ESTATE INC

\$299,000
MLS 7021182 Commercial
111 1st Avenue
Aldrich MN 56434



website: www.AffinityRealEstate.com | email: info@affinityrealestate.com | office: 218-237-3333 | fax: 218-237-3377

Affinity
REAL ESTATE INC

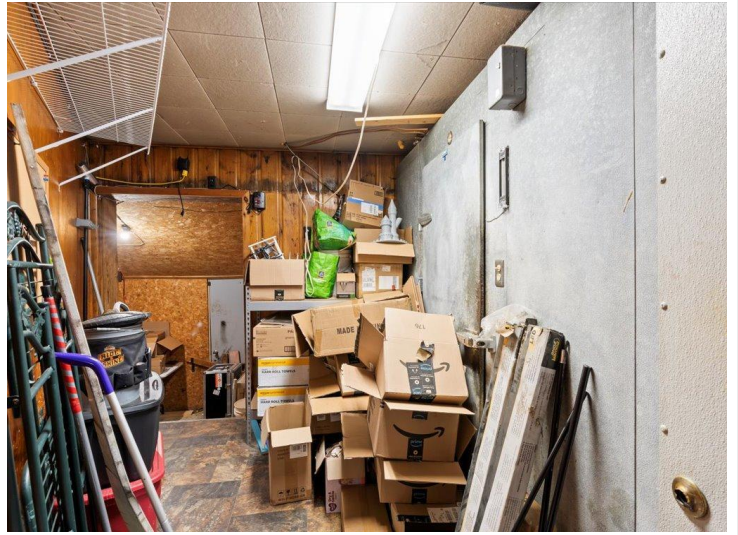
\$299,000
MLS 7021182 Commercial
111 1st Avenue
Aldrich MN 56434



website: www.AffinityRealEstate.com | email: info@affinityrealestate.com | office: 218-237-3333 | fax: 218-237-3377

Affinity
REAL ESTATE INC

\$299,000
MLS 7021182 Commercial
111 1st Avenue
Aldrich MN 56434



website: www.AffinityRealEstate.com | email: info@affinityrealestate.com | office: 218-237-3333 | fax: 218-237-3377

Affinity
REAL ESTATE INC

\$299,000
MLS 7021182 Commercial
111 1st Avenue
Aldrich MN 56434



website: www.AffinityRealEstate.com | email: info@affinityrealestate.com | office: 218-237-3333 | fax:218-237-3377



\$299,000
MLS 7021182 Commercial
111 1st Avenue
Aldrich MN 56434