



MLS 7021721 Residential

\$342,000

858 sq ft
2 bedrooms
1 baths

1489 Gateway Drive
Backus MN 56435

Status: Coming Soon

Description:

If you are looking for a fixer-upper with privacy and lakeshore, this one is it! Excellent opportunity on Horseshoe Lake in Backus for you to bring your ideas and make this property your own! Beneath the towering pines and secluded setting, this property offers a main cabin with lake views, a guest cabin, garage and storage shed. With over 6 acres of privacy, 150' of lakeshore that offers gradual elevation to the lake, you will find that opportunity awaits here.

Additional Details:

Year Built	1932
Lot Acres	6.84
Lot Dimensions	Irregular
Garage Stalls	1
School District	1065
Taxes	\$1,536
Taxes with Assessments	\$1,602
Tax Year	2025

Additional Features:

Fuel: Array **Heat:** Fireplace(s)

Driving Directions:

From Backus, take Hwy 371 N, to East on 16th St. NW, to Ox Yoke Rd. NW, to Right on Gateway Dr. NW to home. ***Follow directions, DO NOT follow GPS. GPS will take you to Balsam Trail which is a dead end.



Listed By:
Edina Realty, Inc.

Affinity Real Estate Inc. participates in the Regional Multiple Listing Service of Minnesota, Inc Broker Reciprocity (sm) program, allowing us to display other broker's listings on our website. All properties are subject to prior sale, change or withdrawal.



Call Affinity Real Estate

218-237-3333

info@affinityrealestate.com



Affinity Real Estate - 600 Park Avenue South - Park Rapids MN 56470



website: www.AffinityRealEstate.com | email: info@affinityrealestate.com | office: 218-237-3333 | fax: 218-237-3377



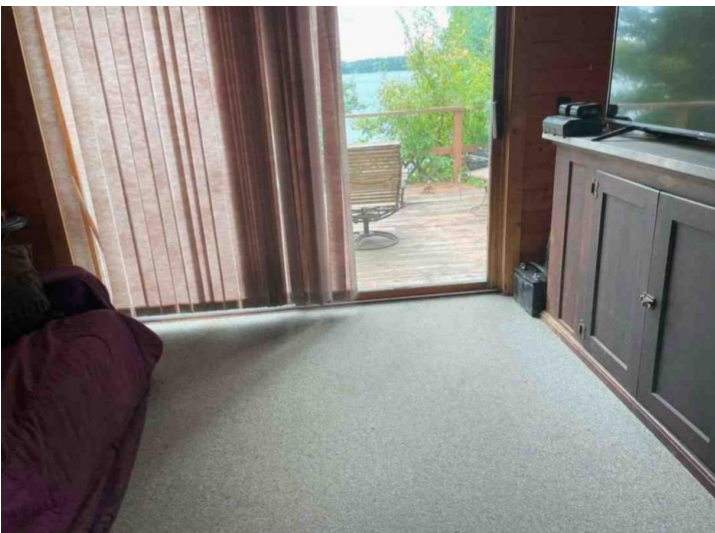
\$342,000
 MLS 7021721 Residential
 1489 Gateway Drive
 Backus MN 56435



website: www.AffinityRealEstate.com | email: info@affinityrealestate.com | office: 218-237-3333 | fax: 218-237-3377

Affinity
REAL ESTATE INC

\$342,000
MLS 7021721 Residential
1489 Gateway Drive
Backus MN 56435



website: www.AffinityRealEstate.com | email: info@affinityrealestate.com | office: 218-237-3333 | fax: 218-237-3377



\$342,000
 MLS 7021721 Residential
 1489 Gateway Drive
 Backus MN 56435



website: www.AffinityRealEstate.com | email: info@affinityrealestate.com | office: 218-237-3333 | fax: 218-237-3377

Affinity
REAL ESTATE INC

\$342,000
MLS 7021721 Residential
1489 Gateway Drive
Backus MN 56435



website: www.AffinityRealEstate.com | email: info@affinityrealestate.com | office: 218-237-3333 | fax: 218-237-3377



\$342,000
 MLS 7021721 Residential
 1489 Gateway Drive
 Backus MN 56435