



MLS 7022051 Residential

**\$365,000**

832 sq ft  
2 bedrooms  
1 baths

5490 Sugarbush Trail  
Longville MN 56655

Status: Active

**Description:**

Some properties are designed to be enjoyed as much outdoors as indoors, and this Lake Inguadona retreat captures that perfectly. Featuring 105 feet of east-facing shoreline, this two-bedroom home welcomes morning sun and peaceful lake views to start each day. Surrounded in part by the natural beauty of the Chippewa National Forest, the setting offers a sense of privacy and connection to the Northwoods that is increasingly difficult to find, with opportunities to hunt, snowmobile, or explore the many nearby trails throughout the seasons. Recent improvements include maintenance-free flooring, a newly updated bathroom, and a refreshed kitchen featuring a stone-top island with seating. Ample space for a dining table creates a comfortable setting for everyday meals and gathering with family and friends. Vaulted ceilings add openness and natural light, enhancing the home's inviting lakeside feel. The true highlight of the property is the expansive screened porch. Large enough to accommodate both a generous seating area and dining space, it provides the perfect place for morning coffee, evening meals, or simply relaxing while enjoying the outdoors in comfort. This property offers an easygoing Up North getaway focused on relaxation, recreation, and year-round enjoyment of the surrounding Northwoods landscape.

**Additional Details:**

Year Built	1980
Lot Acres	0.82
Lot Dimensions	105x259x158x263
School District	118
Taxes	\$928
Taxes with Assessments	\$994
Tax Year	2025

**Additional Features:**

**Fuel:** Array **Heat:** Baseboard, Forced Air

**Driving Directions:**

From Longville - Head out of town on Co Rd 7 for 2.6 miles. Turn left onto 24th Ave NE for 2 miles. Turn right onto Sugar Bush Dr NE for 1.6 miles. Turn right to stay on Sugar Bush Trl to the subject property.



Listed By:  
Heartland Real Estate

Affinity Real Estate Inc. participates in the Regional Multiple Listing Service of Minnesota, Inc Broker Reciprocity (sm) program, allowing us to display other broker's listings on our website. All properties are subject to prior sale, change or withdrawal.



**Call Affinity Real Estate**

**218-237-3333**

**info@affinityrealestate.com**



**Affinity Real Estate - 600 Park Avenue South - Park Rapids MN 56470**



website: [www.AffinityRealEstate.com](http://www.AffinityRealEstate.com) | email: [info@affinityrealestate.com](mailto:info@affinityrealestate.com) | office: 218-237-3333 | fax:218-237-3377



**\$365,000**  
MLS 7022051 Residential  
5490 Sugarbush Trail  
Longville MN 56655



website: [www.AffinityRealEstate.com](http://www.AffinityRealEstate.com) | email: [info@affinityrealestate.com](mailto:info@affinityrealestate.com) | office: 218-237-3333 | fax: 218-237-3377

**Affinity**  
REAL ESTATE INC

**\$365,000**  
MLS 7022051 Residential  
5490 Sugarbush Trail  
Longville MN 56655



website: [www.AffinityRealEstate.com](http://www.AffinityRealEstate.com) | email: [info@affinityrealestate.com](mailto:info@affinityrealestate.com) | office: 218-237-3333 | fax: 218-237-3377

**Affinity**  
REAL ESTATE INC

**\$365,000**  
MLS 7022051 Residential  
5490 Sugarbush Trail  
Longville MN 56655



website: [www.AffinityRealEstate.com](http://www.AffinityRealEstate.com) | email: [info@affinityrealestate.com](mailto:info@affinityrealestate.com) | office: 218-237-3333 | fax: 218-237-3377

**Affinity**  
REAL ESTATE INC

**\$365,000**  
MLS 7022051 Residential  
5490 Sugarbush Trail  
Longville MN 56655



website: [www.AffinityRealEstate.com](http://www.AffinityRealEstate.com) | email: [info@affinityrealestate.com](mailto:info@affinityrealestate.com) | office: 218-237-3333 | fax:218-237-3377

**Affinity**  
REAL ESTATE INC

**\$365,000**  
MLS 7022051 Residential  
5490 Sugarbush Trail  
Longville MN 56655



website: [www.AffinityRealEstate.com](http://www.AffinityRealEstate.com) | email: [info@affinityrealestate.com](mailto:info@affinityrealestate.com) | office: 218-237-3333 | fax:218-237-3377



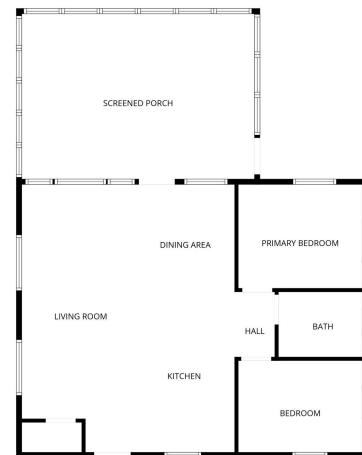
**\$365,000**  
MLS 7022051 Residential  
5490 Sugarbush Trail  
Longville MN 56655



website: [www.AffinityRealEstate.com](http://www.AffinityRealEstate.com) | email: [info@affinityrealestate.com](mailto:info@affinityrealestate.com) | office: 218-237-3333 | fax:218-237-3377



**\$365,000**  
MLS 7022051 Residential  
5490 Sugarbush Trail  
Longville MN 56655



website: [www.AffinityRealEstate.com](http://www.AffinityRealEstate.com) | email: [info@affinityrealestate.com](mailto:info@affinityrealestate.com) | office: 218-237-3333 | fax:218-237-3377



**\$365,000**  
 MLS 7022051 Residential  
 5490 Sugarbush Trail  
 Longville MN 56655