



MLS 7022272 Land

\$189,000

40.75 Acres
Raw Land

TBD State 371
Backus MN 56435

Status: Pending



Description:

40.75 acres of prime Northwoods land in the heart of Minnesota’s outdoor playground! This high, wooded parcel offers the perfect mix of privacy and accessibility, bordering county land for expanded recreation and hunting opportunities right out your back door. Whether you’re dreaming of a secluded homestead, hunting retreat, or weekend getaway, this property delivers. Convenient access to Hwy 371 makes commuting easy while still feeling miles away from it all. Located between Pine River and Backus, you’re surrounded by lakes, rivers, ATV trails, and endless outdoor adventure. A rare chance to own a large, buildable parcel in a sought-after recreation area.

Additional Details:

Lot Acres	40.75
Lot Dimensions	1335x1324x1341x1322
School District	1065
Taxes	(unreported)
Taxes with Assessments	\$66
Tax Year	2026

Additional Features:

Driving Directions:

from Pine River, North on HWY 371 about 4.5 miles to Mildred Bible Chapel, use the North driveway to township road, then around the cemetery to property



Listed By:
North Pointe Realty Advantage

Affinity Real Estate Inc. participates in the Regional Multiple Listing Service of Minnesota, Inc Broker Reciprocity (sm) program, allowing us to display other broker’s listings on our website. All properties are subject to prior sale, change or withdrawal.



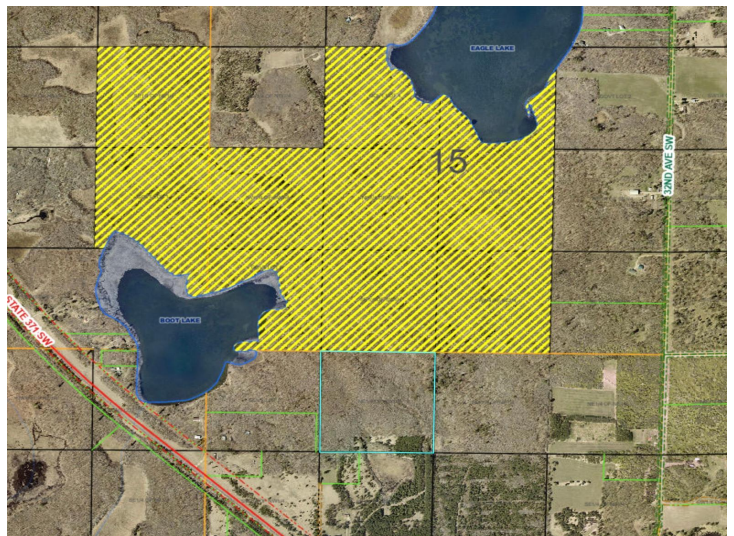
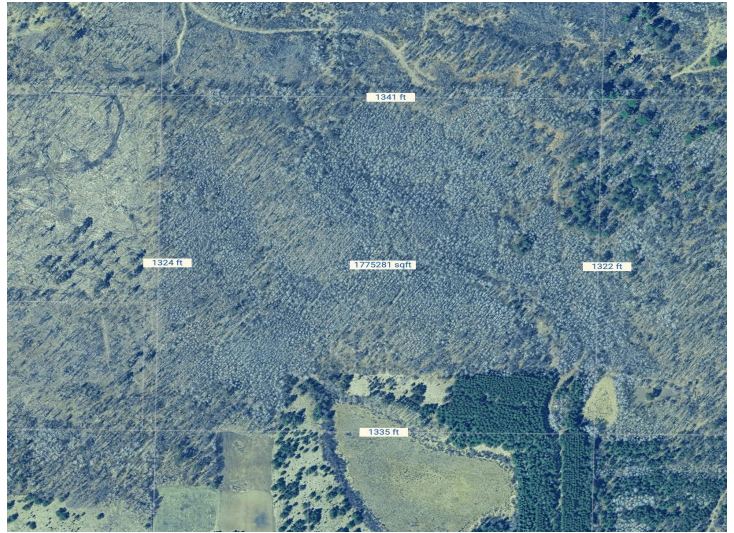
Call Affinity Real Estate

218-237-3333

info@affinityrealestate.com



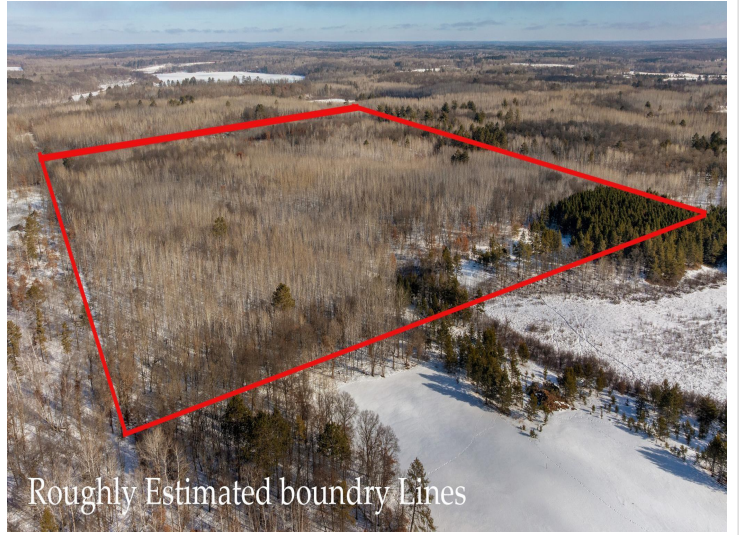
Affinity Real Estate - 600 Park Avenue South - Park Rapids MN 56470



website: www.AffinityRealEstate.com | email: info@affinityrealestate.com | office: 218-237-3333 | fax: 218-237-3377



\$189,000
 MLS 7022272 Land
 TBD State 371
 Backus MN 56435



Roughly Estimated boundry Lines



website: www.AffinityRealEstate.com | email: info@affinityrealestate.com | office: 218-237-3333 | fax:218-237-3377



\$189,000
MLS 7022272 Land
TBD State 371
Backus MN 56435