



MLS 7022514 Residential

**\$325,000**

1,672 sq ft  
3 bedrooms  
2 baths

7821 County 12  
Akeley MN 56433

Status: Active

**Description:**

Picturesque woods surround this year-round haven. This well maintained 3-bedroom, 2-bath home offers approximately 2,080 square feet of comfortable, nature-inspired living. Tucked among the trees, it feels like a secluded treehouse getaway or a mountain chalet, blending rustic charm with modern comforts. With 6+ acres of privacy, the property is a sanctuary of peace, featuring lush woodland landscaping, a tranquil water feature, a cozy fire pit, and an expansive private deck and patio—perfect for savoring quiet mornings and star-filled nights. Inside, the main level welcomes you with an inviting open-concept design where the kitchen, dining, and living areas flow effortlessly. A wood-burning fireplace with a striking stacked-stone surround serves as a charming focal point, making every evening feel like a retreat. This level also includes a spacious bedroom and a newly remodeled ¾ bath, offering ease and comfort. The upper level features a bright and airy office space, full bath, and a charming bedroom, ideal for moments of inspiration or relaxation. The lower-level walk-out expands the living space with a cozy family room, a 3rd bedroom, utility/laundry room with ample storage space, plus patio access for effortless indoor-outdoor living. Outside, you'll find a 24x30 detached garage and paved driveway. Perfectly positioned near the Paul Bunyan and Heartland Trails, renowned fishing on nearby Leech Lake, and only 2 miles from the inviting amenities of Walker, this home isn't just a place to live, it's Northwoods living at its' finest.

**Additional Details:**

Year Built	1985
Lot Acres	6.1
Lot Dimensions	453x458xIRR
Garage Stalls	2
School District	693
Taxes	\$1,142
Taxes with Assessments	\$1,208
Tax Year	2025

**Additional Features:**

**Basement:** Daylight/Lookout Windows, Egress Window(s), Full, Partially Finished, Storage Space, Walkout, Wood **Fuel:** Array **Garage:** 2  
**Heat:** Dual Fuel/Off Peak, Forced Air, Fireplace(s) **Sewer:** Septic System Compliant - Yes, Tank with Drainage Field **Water:** 4-Inch Submersible, Drilled, Well **Air Conditioning:** Central Air

 Listed By:  
Edina Realty, Inc.  
7821 County Road 12 (Jimmy's Restaurant) property for sale in right: 7821 County 12.

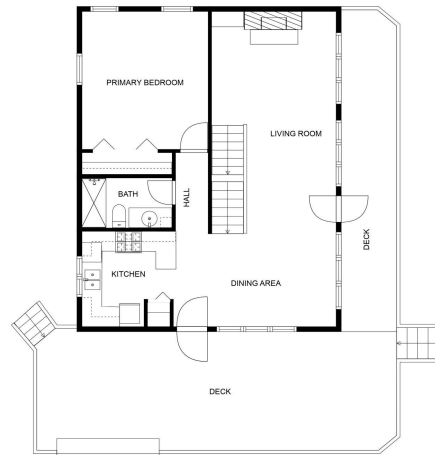
Affinity Real Estate Inc. participates in the Regional Multiple Listing Service of Minnesota, Inc Broker Reciprocity (sm) program, allowing us to display other broker's listings on our website. All properties are subject to prior sale, change or withdrawal.



**Call Affinity Real Estate**  
**218-237-3333**  
**info@affinityrealestate.com**



Affinity Real Estate - 600 Park Avenue South - Park Rapids MN 56470



FLOOR PLAN CREATED BY CURBCASA APP. MEASUREMENTS DEEMED HIGHLY RELIABLE BUT NOT GUARANTEED.

website: [www.AffinityRealEstate.com](http://www.AffinityRealEstate.com) | email: [info@affinityrealestate.com](mailto:info@affinityrealestate.com) | office: 218-237-3333 | fax:218-237-3377



**\$325,000**  
MLS 7022514 Residential  
7821 County 12  
Akeley MN 56433



website: [www.AffinityRealEstate.com](http://www.AffinityRealEstate.com) | email: [info@affinityrealestate.com](mailto:info@affinityrealestate.com) | office: 218-237-3333 | fax: 218-237-3377

**Affinity**  
REAL ESTATE INC

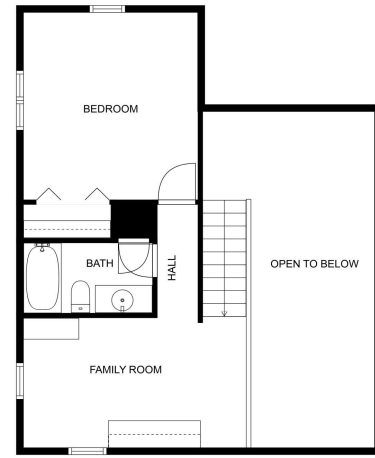
**\$325,000**  
MLS 7022514 Residential  
7821 County 12  
Akeley MN 56433



website: [www.AffinityRealEstate.com](http://www.AffinityRealEstate.com) | email: [info@affinityrealestate.com](mailto:info@affinityrealestate.com) | office: 218-237-3333 | fax:218-237-3377

**Affinity**  
REAL ESTATE INC

**\$325,000**  
MLS 7022514 Residential  
7821 County 12  
Akeley MN 56433



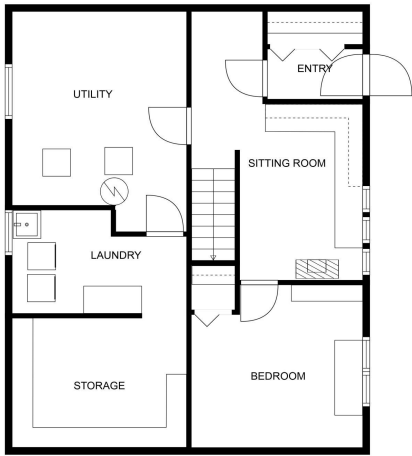
FLOOR PLAN CREATED BY CURBICASA APP. MEASUREMENTS DEEMED HIGHLY RELIABLE BUT NOT GUARANTEED.



website: [www.AffinityRealEstate.com](http://www.AffinityRealEstate.com) | email: [info@affinityrealestate.com](mailto:info@affinityrealestate.com) | office: 218-237-3333 | fax: 218-237-3377



**\$325,000**  
 MLS 7022514 Residential  
 7821 County 12  
 Akeley MN 56433



FLOOR PLAN CREATED BY CURSCASA APP; MEASUREMENTS DEEMED HIGHLY RELIABLE BUT NOT GUARANTEED.



website: [www.AffinityRealEstate.com](http://www.AffinityRealEstate.com) | email: [info@affinityrealestate.com](mailto:info@affinityrealestate.com) | office: 218-237-3333 | fax:218-237-3377



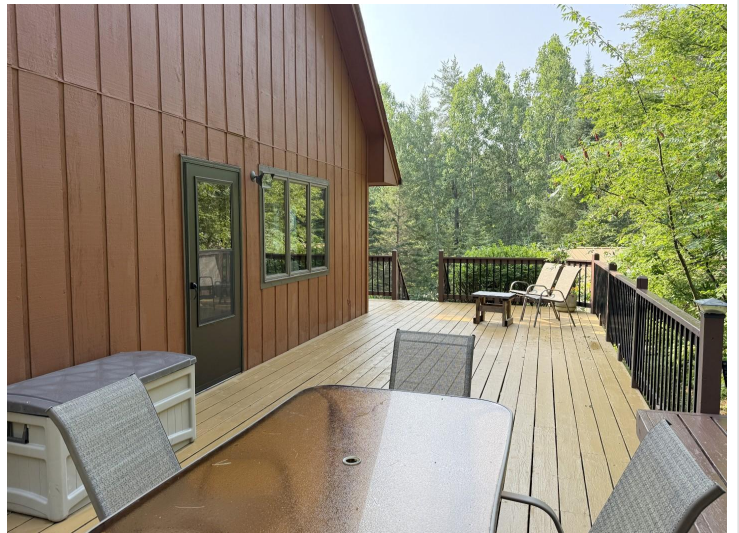
**\$325,000**  
 MLS 7022514 Residential  
 7821 County 12  
 Akeley MN 56433



website: [www.AffinityRealEstate.com](http://www.AffinityRealEstate.com) | email: [info@affinityrealestate.com](mailto:info@affinityrealestate.com) | office: 218-237-3333 | fax:218-237-3377

**Affinity**  
REAL ESTATE INC

**\$325,000**  
MLS 7022514 Residential  
7821 County 12  
Akeley MN 56433



website: [www.AffinityRealEstate.com](http://www.AffinityRealEstate.com) | email: [info@affinityrealestate.com](mailto:info@affinityrealestate.com) | office: 218-237-3333 | fax:218-237-3377

**Affinity**  
REAL ESTATE INC

**\$325,000**  
MLS 7022514 Residential  
7821 County 12  
Akeley MN 56433



website: [www.AffinityRealEstate.com](http://www.AffinityRealEstate.com) | email: [info@affinityrealestate.com](mailto:info@affinityrealestate.com) | office: 218-237-3333 | fax:218-237-3377

**Affinity**  
REAL ESTATE INC

**\$325,000**  
MLS 7022514 Residential  
7821 County 12  
Akeley MN 56433



website: [www.AffinityRealEstate.com](http://www.AffinityRealEstate.com) | email: [info@affinityrealestate.com](mailto:info@affinityrealestate.com) | office: 218-237-3333 | fax:218-237-3377



**\$325,000**  
MLS 7022514 Residential  
7821 County 12  
Akeley MN 56433



website: [www.AffinityRealEstate.com](http://www.AffinityRealEstate.com) | email: [info@affinityrealestate.com](mailto:info@affinityrealestate.com) | office: 218-237-3333 | fax:218-237-3377



**\$325,000**  
MLS 7022514 Residential  
7821 County 12  
Akeley MN 56433