



MLS 7022618 Land

\$79,800

19 Acres
Raw Land

TBD County Road 26
Sebeka MN 56477

Status: Active

Description:

****19 Acres FOR SALE!****

19 acres of this parcel is for sale. New Legal description and new Property Identification Number will be registered at closing. There is a good mixture of mature trees and small growth. This acreage is majority high land, with some low land by the corner. This would make an excellent building site or serve as recreational use! The property is located on the NW corner of County Road 26 and 270th Street, about one mile south of Nimrod.

Additional Details:

Lot Acres	19
Lot Dimensions	650x1274x513x265x165x1025
School District	2285
Taxes	\$1,680
Taxes with Assessments	\$1,680
Tax Year	2025

Additional Features:

Driving Directions:

From Sebeka, Go East on 280th Street. Before the Nimrod Curve, Take a Right on County Road 26. Go South to 270th Street. Property is on Right.



Listed By:
National Realty Guild

Affinity Real Estate Inc. participates in the Regional Multiple Listing Service of Minnesota, Inc Broker Reciprocity (sm) program, allowing us to display other broker's listings on our website. All properties are subject to prior sale, change or withdrawal.



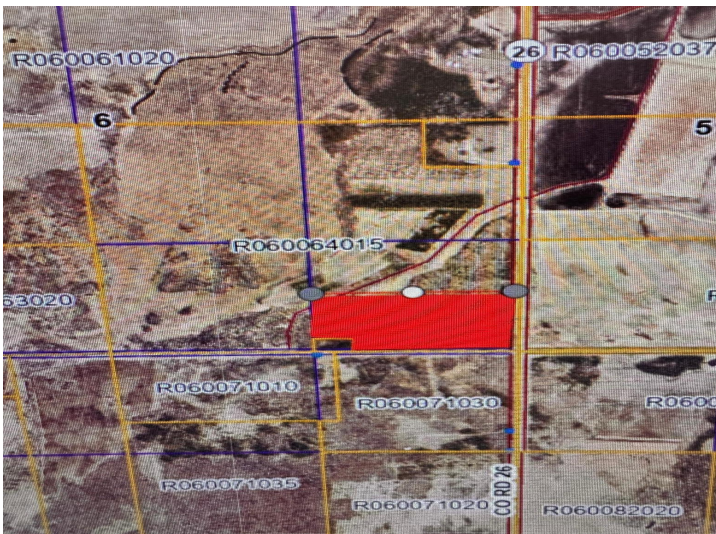
Call Affinity Real Estate

218-237-3333

info@affinityrealestate.com



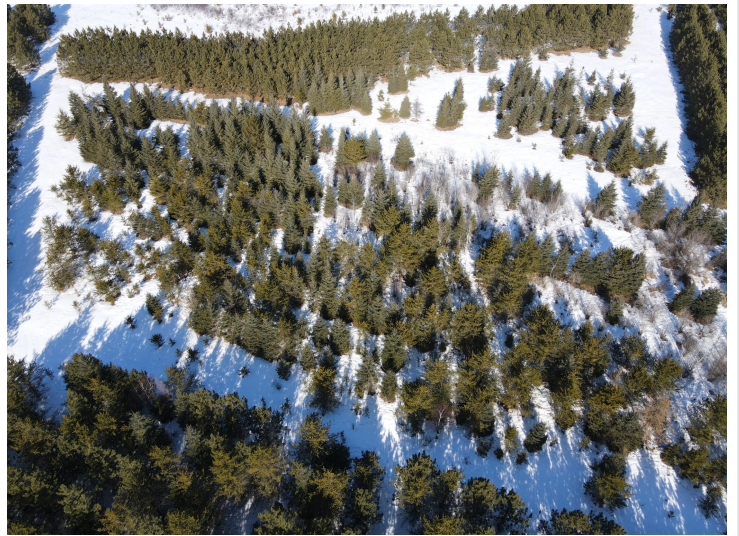
Affinity Real Estate - 600 Park Avenue South - Park Rapids MN 56470



website: www.AffinityRealEstate.com | email: info@affinityrealestate.com | office: 218-237-3333 | fax: 218-237-3377



\$79,800
 MLS 7022618 Land
 TBD County Road 26
 Sebeka MN 56477



website: www.AffinityRealEstate.com | email: info@affinityrealestate.com | office: 218-237-3333 | fax: 218-237-3377



\$79,800
 MLS 7022618 Land
 TBD County Road 26
 Sebeka MN 56477



website: www.AffinityRealEstate.com | email: info@affinityrealestate.com | office: 218-237-3333 | fax: 218-237-3377



\$79,800
MLS 7022618 Land
TBD County Road 26
Sebeka MN 56477



website: www.AffinityRealEstate.com | email: info@affinityrealestate.com | office: 218-237-3333 | fax: 218-237-3377



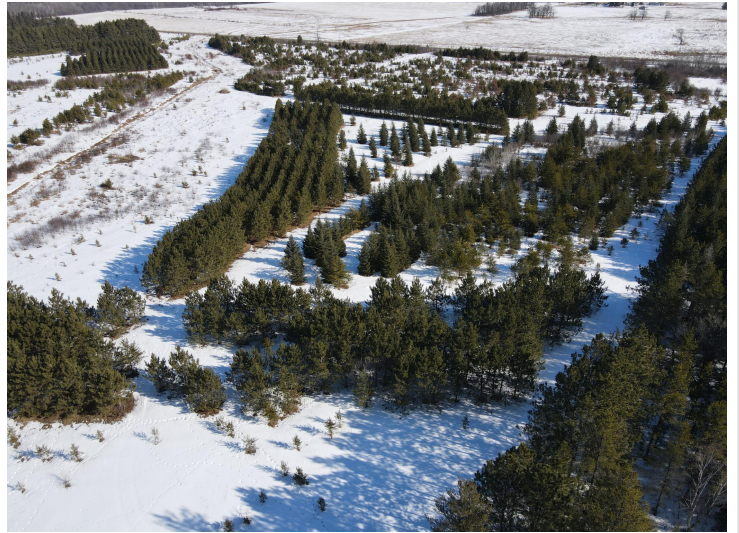
\$79,800
 MLS 7022618 Land
 TBD County Road 26
 Sebeka MN 56477



website: www.AffinityRealEstate.com | email: info@affinityrealestate.com | office: 218-237-3333 | fax: 218-237-3377



\$79,800
MLS 7022618 Land
TBD County Road 26
Sebeka MN 56477



website: www.AffinityRealEstate.com | email: info@affinityrealestate.com | office: 218-237-3333 | fax: 218-237-3377



\$79,800
 MLS 7022618 Land
 TBD County Road 26
 Sebeka MN 56477



website: www.AffinityRealEstate.com | email: info@affinityrealestate.com | office: 218-237-3333 | fax: 218-237-3377



\$79,800
MLS 7022618 Land
TBD County Road 26
Sebeka MN 56477