



MLS 7022665 Land

**\$119,900**

12.14 Acres  
Raw Land

XXX 170th Street  
Park Rapids MN 56470

Status: Pending

**Description:**

This is it! 12 gorgeous acres with an awesome location between Long and Belle Taine lakes. It provides the perfect canvas for your next home as it is incredibly scenic with an unbelievable display of White, Balsam, Spruce and Norway pines. Features new growth, old growth, an active wildlife pond and numerous building sites throughout. Alternatively, if you are seeking the ideal recreational headquarters, look no further! There are no restrictive covenants so you can build the shop, shouse or bring your RV and enjoy a front row seat to everything the Northwood's has to offer. Electricity and fiber optic internet are available and run along the roadside property boundary. Truly a stunning property that will not disappoint!

**Additional Details:**

Year Built	2005
Lot Acres	12.14
Lot Dimensions	468 x 1129 x 468 x 1127
School District	1384
Taxes	\$254
Taxes with Assessments	\$254
Tax Year	2026

**Additional Features:**

**Driving Directions:**

From Hwy 34 @ the Dorset Corner: Go South two miles on CR 11 to a left on 170th St. Proceed 1/2 a mile to property on your left.



Listed By:  
Affinity Real Estate Inc.

Affinity Real Estate Inc. participates in the Regional Multiple Listing Service of Minnesota, Inc Broker Reciprocity (sm) program, allowing us to display other broker's listings on our website. All properties are subject to prior sale, change or withdrawal.



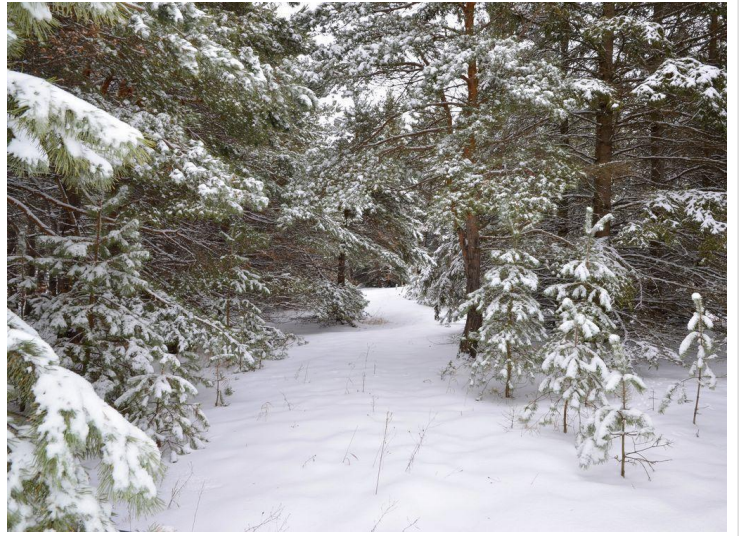
**Call Affinity Real Estate**

**218-237-3333**

**info@affinityrealestate.com**



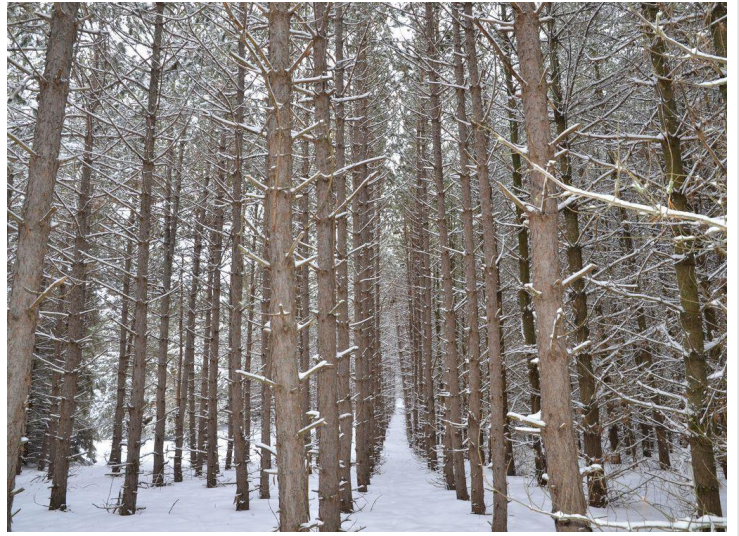
**Affinity Real Estate - 600 Park Avenue South - Park Rapids MN 56470**



website: [www.AffinityRealEstate.com](http://www.AffinityRealEstate.com) | email: [info@affinityrealestate.com](mailto:info@affinityrealestate.com) | office: 218-237-3333 | fax: 218-237-3377



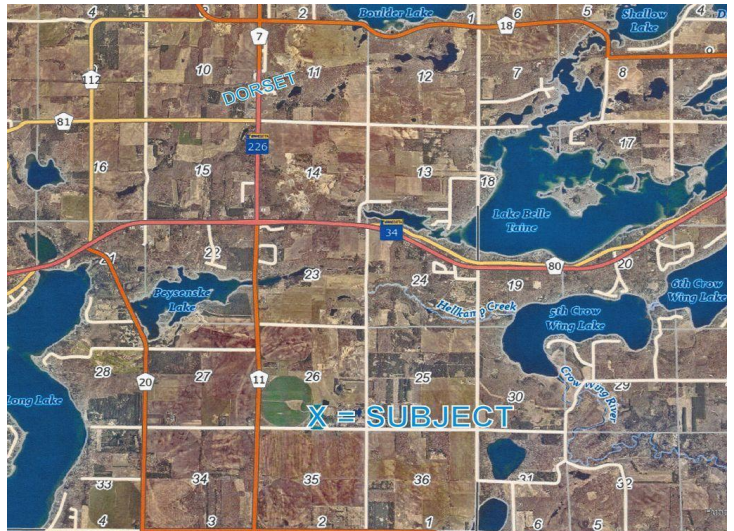
**\$119,900**  
MLS 7022665 Land  
XXX 170th Street  
Park Rapids MN 56470



website: [www.AffinityRealEstate.com](http://www.AffinityRealEstate.com) | email: [info@affinityrealestate.com](mailto:info@affinityrealestate.com) | office: 218-237-3333 | fax:218-237-3377



**\$119,900**  
MLS 7022665 Land  
XXX 170th Street  
Park Rapids MN 56470



website: [www.AffinityRealEstate.com](http://www.AffinityRealEstate.com) | email: [info@affinityrealestate.com](mailto:info@affinityrealestate.com) | office: 218-237-3333 | fax:218-237-3377



**\$119,900**  
MLS 7022665 Land  
XXX 170th Street  
Park Rapids MN 56470