



MLS 7022787 Lake Home

\$284,999

880 sq ft
2 bedrooms
1 baths

3865 Wahtomin Trail
Alexandria MN 56308

Waterfront: Ida

Status: Active

Description:

Pack your bags and head to the lake! That's what you will be doing when you're the new proud owner of this year-round home on Lake Ida! This 2BR, 1BA is welcoming a new owner and will definitely meet those things on your wish list for lake enjoyment. Take in the beautiful Lake Ida views right outside your window or seated on your deck. Enjoy the spacious grounds for all the yard games, convenient location to the in-ground swimming pool, and so much more. Inside you will find great flow as the floor plan provides a living, kitchen, and dining area. Spend your day soaking up the sun while the association takes care of the lawn, pool, snow removal, and docks, to name a few things. One look is all it takes with this one!

Additional Details:

Year Built	1986
Lot Acres	0.03
Lot Dimensions	27x50x27x50
School District	206
Taxes	\$1,934
Taxes with Assessments	\$1,934
Tax Year	2025

Additional Features:

Fuel: Electric, Propane **Heat:** Baseboard

Driving Directions:

From Alexandria head W on 82 to Co Rd 22 take right and follow to Co Rd 6, go approx. 2.5 miles to Foxy Lane, take right and right onto Wahtomin Trail, then left to sign.



Listed By:
Central MN Realty LLC

Affinity Real Estate Inc. participates in the Regional Multiple Listing Service of Minnesota, Inc Broker Reciprocity (sm) program, allowing us to display other broker's listings on our website. All properties are subject to prior sale, change or withdrawal.



Call Affinity Real Estate

218-237-3333

info@affinityrealestate.com



Affinity Real Estate - 600 Park Avenue South - Park Rapids MN 56470



website: www.AffinityRealEstate.com | email: info@affinityrealestate.com | office: 218-237-3333 | fax:218-237-3377

Affinity
REAL ESTATE INC

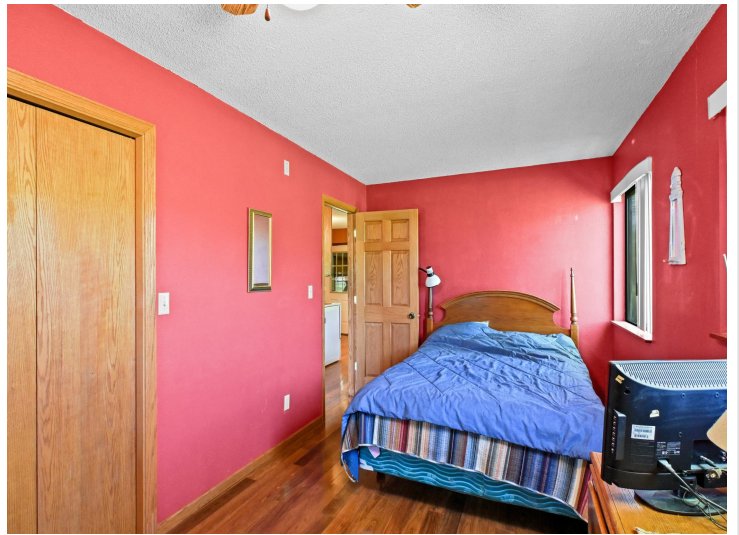
\$284,999
MLS 7022787 Lake Home
3865 Wahtomin Trail
Alexandria MN 56308



website: www.AffinityRealEstate.com | email: info@affinityrealestate.com | office: 218-237-3333 | fax:218-237-3377

Affinity
REAL ESTATE INC

\$284,999
MLS 7022787 Lake Home
3865 Wahtomin Trail
Alexandria MN 56308



website: www.AffinityRealEstate.com | email: info@affinityrealestate.com | office: 218-237-3333 | fax:218-237-3377

Affinity
REAL ESTATE INC

\$284,999
MLS 7022787 Lake Home
3865 Wahtomin Trail
Alexandria MN 56308



website: www.AffinityRealEstate.com | email: info@affinityrealestate.com | office: 218-237-3333 | fax:218-237-3377

Affinity
REAL ESTATE INC

\$284,999
MLS 7022787 Lake Home
3865 Wahtomin Trail
Alexandria MN 56308



website: www.AffinityRealEstate.com | email: info@affinityrealestate.com | office: 218-237-3333 | fax:218-237-3377

Affinity
REAL ESTATE INC

\$284,999
MLS 7022787 Lake Home
3865 Wahtomin Trail
Alexandria MN 56308



website: www.AffinityRealEstate.com | email: info@affinityrealestate.com | office: 218-237-3333 | fax:218-237-3377



\$284,999
MLS 7022787 Lake Home
3865 Wahtomin Trail
Alexandria MN 56308