



MLS 7022822 Residential

\$359,900

2,364 sq ft
4 bedrooms
2 baths

15125 Warrior Avenue
Brainerd MN 56401

Status: Active

Description:

Don't miss this four bedroom, two bath newer home in a highly desirable location off Beaver Dam Rd. Home has been very well maintained with wood floors throughout the main level, tiled bath, 6-panel doors, and a spacious primary suite with walk-in closet and built-in cabinets. Kitchen features backsplash, a commercial stainless hood fan, garbage disposal, water softener, and water filtration system. Fully finished basement includes a bonus office room. Nicely landscaped yard with irrigation system and trex decking on front step and rear deck. Rare homesite with scenic countryside views and no homes directly behind. Close access to walking trail.

Additional Details:

Year Built	2016
Lot Acres	0.23
Lot Dimensions	75x135
Garage Stalls	2
School District	896
Taxes	\$3,224
Taxes with Assessments	\$3,224
Tax Year	2025

Additional Features:

Basement: Block, Finished **Fuel:** Array **Garage:** 2 **Heat:** Forced Air **Sewer:** City Sewer/Connected **Water:** City Water/Connected **Air Conditioning:** Central Air

Driving Directions:

Riverside Dr to Beaver Dam Rd to Northtown



Listed By:
eXp Realty

Affinity Real Estate Inc. participates in the Regional Multiple Listing Service of Minnesota, Inc Broker Reciprocity (sm) program, allowing us to display other broker's listings on our website. All properties are subject to prior sale, change or withdrawal.



Call Affinity Real Estate

218-237-3333

info@affinityrealestate.com



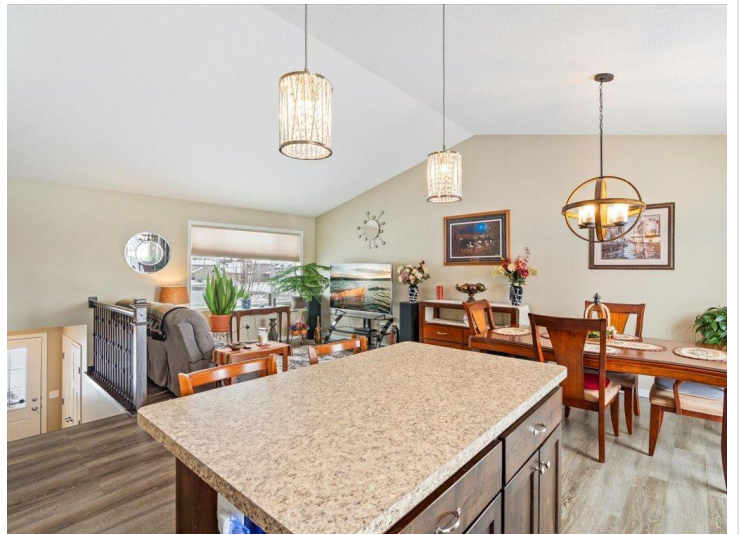
Affinity Real Estate - 600 Park Avenue South - Park Rapids MN 56470



website: www.AffinityRealEstate.com | email: info@affinityrealestate.com | office: 218-237-3333 | fax:218-237-3377



\$359,900
MLS 7022822 Residential
15125 Warrior Avenue
Brainerd MN 56401



website: www.AffinityRealEstate.com | email: info@affinityrealestate.com | office: 218-237-3333 | fax: 218-237-3377

Affinity
REAL ESTATE INC

\$359,900
MLS 7022822 Residential
15125 Warrior Avenue
Brainerd MN 56401



website: www.AffinityRealEstate.com | email: info@affinityrealestate.com | office: 218-237-3333 | fax: 218-237-3377

Affinity
REAL ESTATE INC

\$359,900
MLS 7022822 Residential
15125 Warrior Avenue
Brainerd MN 56401



website: www.AffinityRealEstate.com | email: info@affinityrealestate.com | office: 218-237-3333 | fax:218-237-3377

Affinity
REAL ESTATE INC

\$359,900
MLS 7022822 Residential
15125 Warrior Avenue
Brainerd MN 56401



website: www.AffinityRealEstate.com | email: info@affinityrealestate.com | office: 218-237-3333 | fax:218-237-3377

Affinity
REAL ESTATE INC

\$359,900
MLS 7022822 Residential
15125 Warrior Avenue
Brainerd MN 56401



website: www.AffinityRealEstate.com | email: info@affinityrealestate.com | office: 218-237-3333 | fax:218-237-3377



\$359,900
MLS 7022822 Residential
15125 Warrior Avenue
Brainerd MN 56401