



MLS 7023005 Residential

\$400,000

1,200 sq ft
2 bedrooms
3 baths

2785 Sleepy Hollow Road
Fort Ripley MN 56449

Status: Coming Soon

Description:

Look no further—your dream of the perfect "shouse" (shop-house) has arrived. Situated on a private, 2.5-acre lot with a fully fenced-in backyard, this property offers the ultimate blend of modern living and massive storage. Let's start with the crown jewel: a colossal 80x40 fully finished shop. Whether you have a fleet of boats, ATVs, a commercial setup, or just need room to breathe, 3,200 square feet of shop space has you covered. The living quarters feature a clean, efficient 2-bedroom, 3-bathroom layout with 1,200 finished square feet. Enjoy morning coffee on the large deck overlooking your private acreage, or take advantage of the easy Crow Wing Lake access just down the road. This is the low-maintenance, high-storage lifestyle you've been looking for.

Additional Details:

Year Built	2022
Lot Acres	2.57
Lot Dimensions	206x522x206x537
Garage Stalls	2
School District	181
Taxes	\$1,984
Taxes with Assessments	\$1,984
Tax Year	2025

Additional Features:

Basement: None **Fuel:** Propane **Garage:** 2 **Heat:** Forced Air **Sewer:** Private Sewer, Septic System Compliant - Yes **Water:** Private **Air Conditioning:** Central Air

Driving Directions:

From Baxter take 371 S to Sleepy Hollow Rd make a left home on right.



Listed By:
Edina Realty, Inc.

Affinity Real Estate Inc. participates in the Regional Multiple Listing Service of Minnesota, Inc Broker Reciprocity (sm) program, allowing us to display other broker's listings on our website. All properties are subject to prior sale, change or withdrawal.



Call Affinity Real Estate

218-237-3333

info@affinityrealestate.com



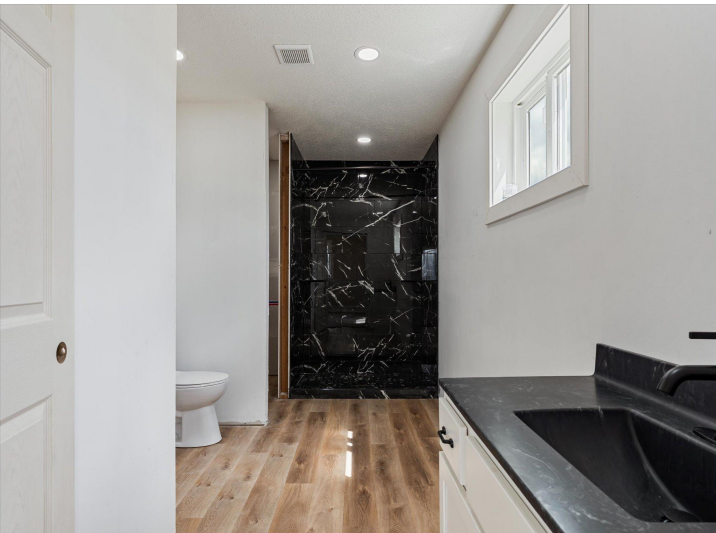
Affinity Real Estate - 600 Park Avenue South - Park Rapids MN 56470



website: www.AffinityRealEstate.com | email: info@affinityrealestate.com | office: 218-237-3333 | fax: 218-237-3377

Affinity
REAL ESTATE INC

\$400,000
MLS 7023005 Residential
2785 Sleepy Hollow Road
Fort Ripley MN 56449



website: www.AffinityRealEstate.com | email: info@affinityrealestate.com | office: 218-237-3333 | fax:218-237-3377

Affinity
REAL ESTATE INC

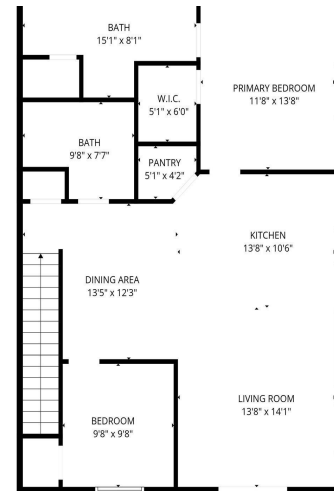
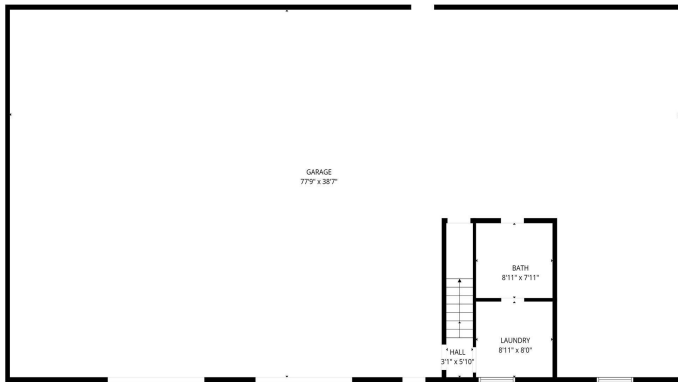
\$400,000
MLS 7023005 Residential
2785 Sleepy Hollow Road
Fort Ripley MN 56449



website: www.AffinityRealEstate.com | email: info@affinityrealestate.com | office: 218-237-3333 | fax: 218-237-3377

Affinity
REAL ESTATE INC

\$400,000
MLS 7023005 Residential
2785 Sleepy Hollow Road
Fort Ripley MN 56449



website: www.AffinityRealEstate.com | email: info@affinityrealestate.com | office: 218-237-3333 | fax: 218-237-3377



\$400,000
 MLS 7023005 Residential
 2785 Sleepy Hollow Road
 Fort Ripley MN 56449



website: www.AffinityRealEstate.com | email: info@affinityrealestate.com | office: 218-237-3333 | fax:218-237-3377



\$400,000

MLS 7023005 Residential
2785 Sleepy Hollow Road
Fort Ripley MN 56449