



MLS 7023041 Residential

**\$325,000**

1,540 sq ft  
3 bedrooms  
3 baths

42734 State Highway 108  
Perham MN 56573

Status: Active

**Description:**

Enjoy the perfect blend of privacy, convenience, and modern updates with this beautifully maintained 1-story single-family home set on 3 scenic acres just 5 minutes from Perham, right in the heart of Lakes Country. This nicely updated home offers all living facilities on the main level, making everyday living comfortable and accessible. Recent improvements include an updated kitchen with newer appliances, updated bathrooms on the main level, newer flooring throughout, plus newer HVAC and plumbing for peace of mind. The property truly shines with its exceptional outbuildings and storage: a double-deep, insulated attached pass-through garage, along with an impressive 26' x 96' machine shed half insulated with a concrete floor-ideal for hobbies, equipment, or business use. Two additional storage sheds add even more flexibility. A new 5-bedroom certified septic system is already in place, and modern conveniences include fiber optic internet and natural gas. This is a rare opportunity to own an updated, move-in-ready home with acreage and outstanding functionality in a prime location.

**Additional Details:**

Year Built	1965
Lot Acres	3
Lot Dimensions	242x540
Garage Stalls	4
School District	1955
Taxes	\$2,088
Taxes with Assessments	\$2,088
Tax Year	2025

**Additional Features:**

**Fuel:** Array **Heat:** Forced Air

**Driving Directions:**

From downtown Perham go south on 3rd Ave SE/ Otter Trail Scenic Byway for 2.6 miles, turn right on MN-108, go 1.3 miles and the property will be on your left.



Listed By:  
Keller Williams Realty Professionals

Affinity Real Estate Inc. participates in the Regional Multiple Listing Service of Minnesota, Inc Broker Reciprocity (sm) program, allowing us to display other broker's listings on our website. All properties are subject to prior sale, change or withdrawal.



**Call Affinity Real Estate**

**218-237-3333**

**[info@affinityrealestate.com](mailto:info@affinityrealestate.com)**



**Affinity Real Estate - 600 Park Avenue South - Park Rapids MN 56470**





website: [www.AffinityRealEstate.com](http://www.AffinityRealEstate.com) | email: [info@affinityrealestate.com](mailto:info@affinityrealestate.com) | office: 218-237-3333 | fax: 218-237-3377



**\$325,000**  
 MLS 7023041 Residential  
 42734 State Highway 108  
 Perham MN 56573





website: [www.AffinityRealEstate.com](http://www.AffinityRealEstate.com) | email: [info@affinityrealestate.com](mailto:info@affinityrealestate.com) | office: 218-237-3333 | fax: 218-237-3377

**Affinity**  
REAL ESTATE INC

**\$325,000**  
MLS 7023041 Residential  
42734 State Highway 108  
Perham MN 56573





website: [www.AffinityRealEstate.com](http://www.AffinityRealEstate.com) | email: [info@affinityrealestate.com](mailto:info@affinityrealestate.com) | office: 218-237-3333 | fax: 218-237-3377

**Affinity**  
REAL ESTATE INC

**\$325,000**  
MLS 7023041 Residential  
42734 State Highway 108  
Perham MN 56573





website: [www.AffinityRealEstate.com](http://www.AffinityRealEstate.com) | email: [info@affinityrealestate.com](mailto:info@affinityrealestate.com) | office: 218-237-3333 | fax: 218-237-3377



**\$325,000**  
MLS 7023041 Residential  
42734 State Highway 108  
Perham MN 56573





website: [www.AffinityRealEstate.com](http://www.AffinityRealEstate.com) | email: [info@affinityrealestate.com](mailto:info@affinityrealestate.com) | office: 218-237-3333 | fax: 218-237-3377



**\$325,000**  
 MLS 7023041 Residential  
 42734 State Highway 108  
 Perham MN 56573





website: [www.AffinityRealEstate.com](http://www.AffinityRealEstate.com) | email: [info@affinityrealestate.com](mailto:info@affinityrealestate.com) | office: 218-237-3333 | fax: 218-237-3377



**\$325,000**

MLS 7023041 Residential  
42734 State Highway 108  
Perham MN 56573



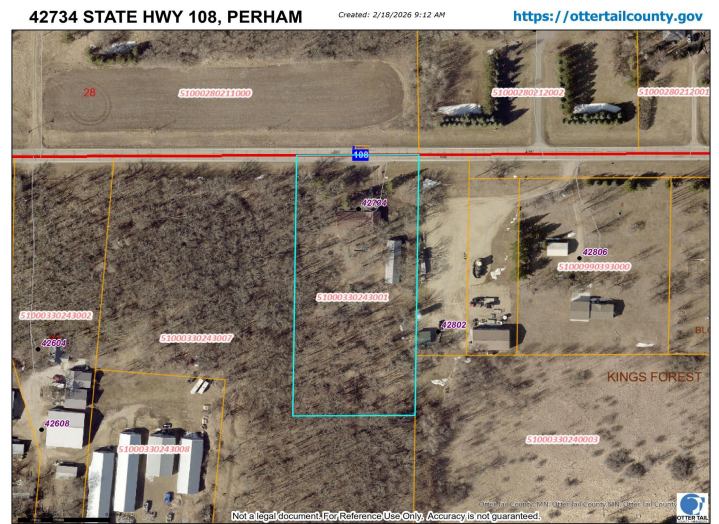


website: [www.AffinityRealEstate.com](http://www.AffinityRealEstate.com) | email: [info@affinityrealestate.com](mailto:info@affinityrealestate.com) | office: 218-237-3333 | fax: 218-237-3377



**\$325,000**  
 MLS 7023041 Residential  
 42734 State Highway 108  
 Perham MN 56573





website: [www.AffinityRealEstate.com](http://www.AffinityRealEstate.com) | email: [info@affinityrealestate.com](mailto:info@affinityrealestate.com) | office: 218-237-3333 | fax: 218-237-3377



**\$325,000**  
 MLS 7023041 Residential  
 42734 State Highway 108  
 Perham MN 56573