



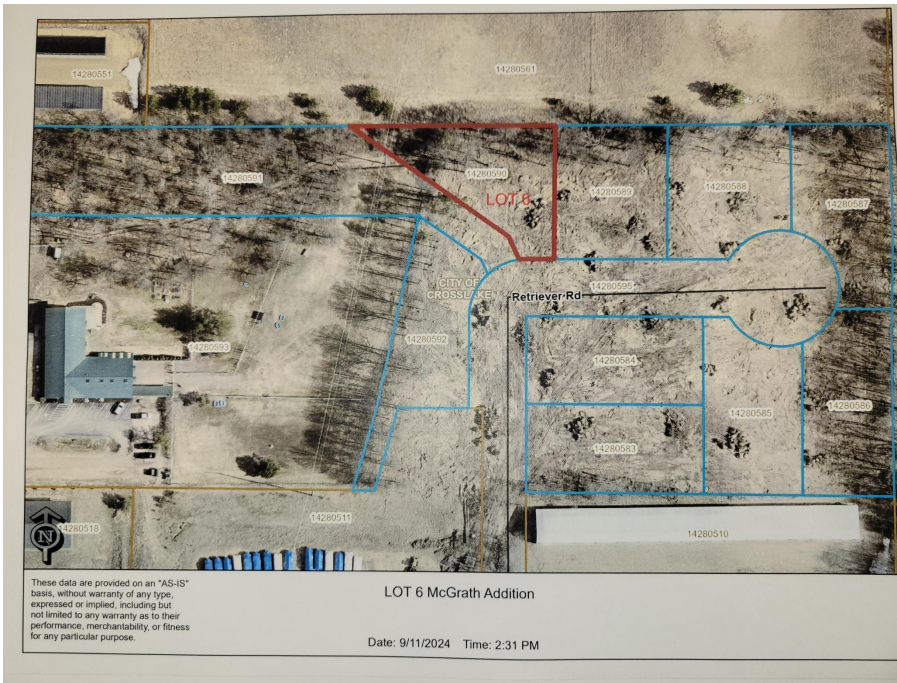
MLS 7023134 Land

**\$76,900**

0.46 Acres  
Subdivided

Lot 6 Retriever Road  
Crosslake MN 56442

Status: Active



#### Description:

This lot is perfect for your business or personal storage needs. Hard to find 27,607 square foot limited commercial with mixed use lot on a paved private cul-de-sac road in the heart of Crosslake with 50% impervious coverage. The lot is mostly cleared and ready for your new building. Electricity and natural gas have been brought into the development and are available at the road.

#### Additional Details:

Lot Acres	0.46
Lot Dimensions	40x29x225x238x155
School District	909
Taxes	\$74
Taxes with Assessments	\$74
Tax Year	2025

#### Additional Features:

#### Driving Directions:

From Crosslake, go South on County Road 3 to a left on Black Bear Path, go 1/2 block to a left on Northern Terrace. Go to the end of the road and follow signs to Retriever Road.



Listed By:  
Edina Realty, Inc.

Affinity Real Estate Inc. participates in the Regional Multiple Listing Service of Minnesota, Inc Broker Reciprocity (sm) program, allowing us to display other broker's listings on our website. All properties are subject to prior sale, change or withdrawal.



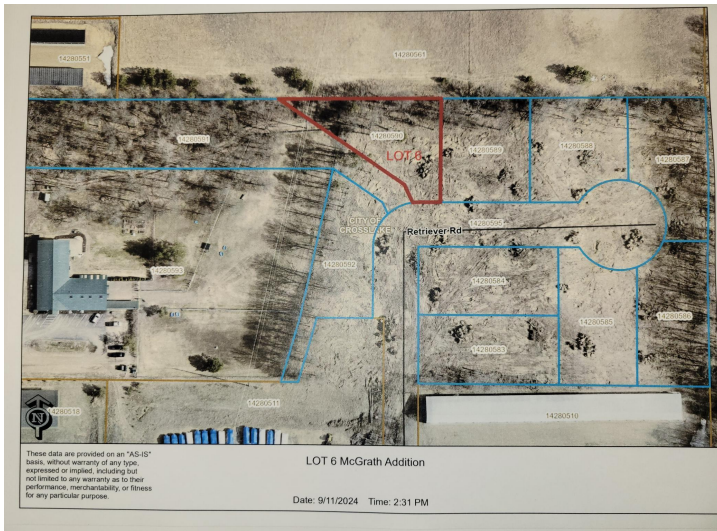
Call Affinity Real Estate

**218-237-3333**

[info@affinityrealestate.com](mailto:info@affinityrealestate.com)



Affinity Real Estate - 600 Park Avenue South - Park Rapids MN 56470



website: [www.AffinityRealEstate.com](http://www.AffinityRealEstate.com) | email: [info@affinityrealestate.com](mailto:info@affinityrealestate.com) | office: 218-237-3333 | fax: 218-237-3377



**\$76,900**  
 MLS 7023134 Land  
 Lot 6 Retriever Road  
 Crosslake MN 56442