

MLS 7023229 Land

\$699,000

7.41 Acres

Raw Land

15541 153rd Street
Little Falls MN 56345

Status: Active

Description:

Excellent opportunity to purchase one or two large development sites near Wal-Mart in Little Falls. Sites are currently zoned residential and would lend themselves to the growing residential neighborhood. There is also potential for re-zoning to commercial, which would provide a highly visibly easily accessible site for retail, office, restaurant and more. Now is a great time to capitalize on the flourishing Little Falls market, which is the passage way between Brainerd and St. Cloud, and many other locations frequently traveled.

Additional Details:

Lot Acres	7.41
Lot Dimensions	850x380x850x380
School District	1795
Taxes	\$668
Taxes with Assessments	\$668
Tax Year	2025

Additional Features:

Driving Directions:

From Hwy 371/Hwy10 and Hwy 27 intersection in Little Falls - East on Hwy 27 - North on 18th Street NE - Property is located on the right (East) about 320' north of Dollar Tree, and spans all the way to 153rd Street



Listed By:
Close-Converse Commercial Prop

Affinity Real Estate Inc. participates in the Regional Multiple Listing Service of Minnesota, Inc Broker Reciprocity (sm) program, allowing us to display other broker's listings on our website. All properties are subject to prior sale, change or withdrawal.



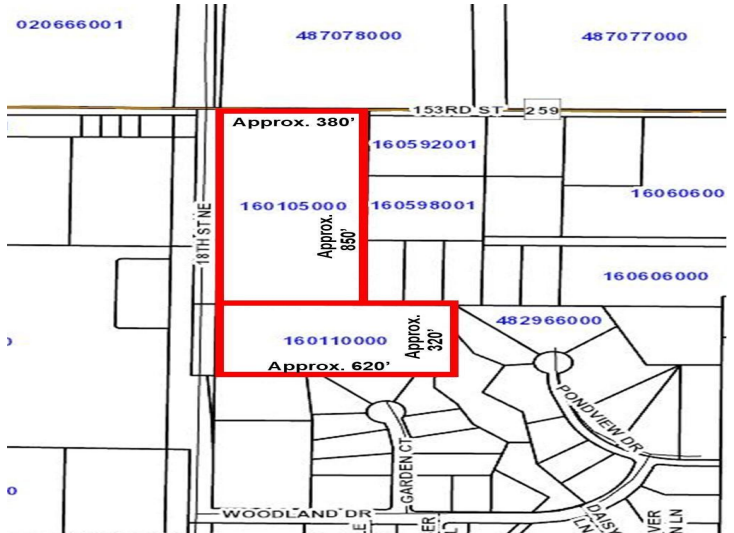
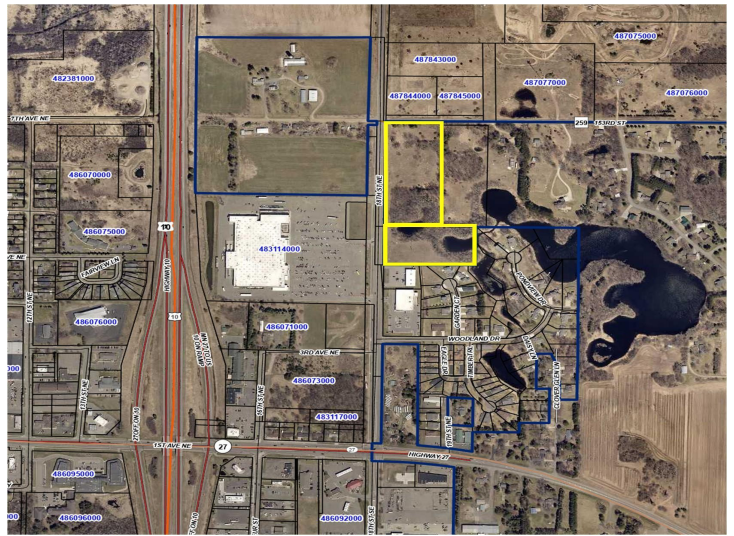
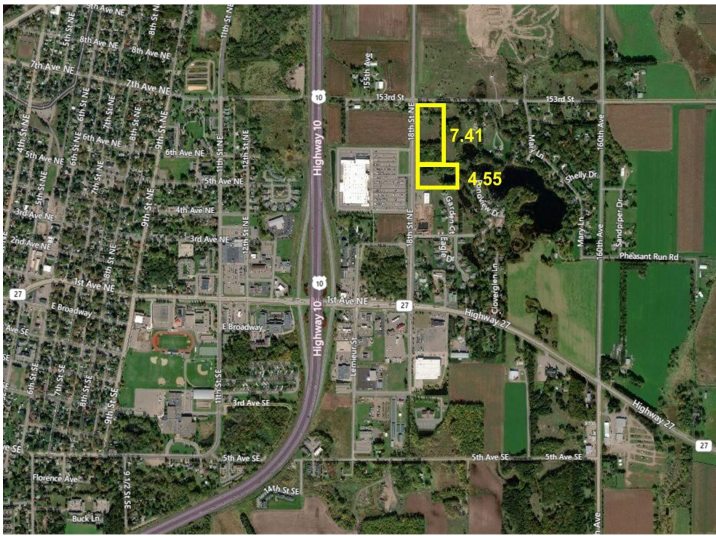
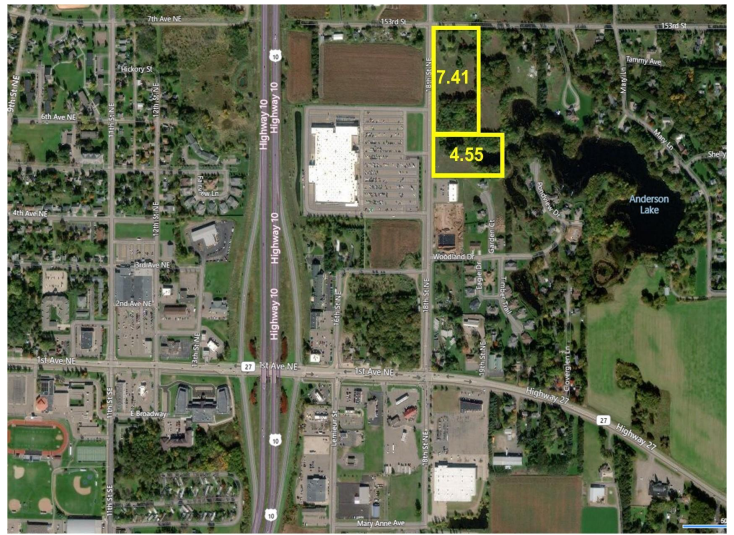
Call Affinity Real Estate

218-237-3333

info@affinityrealestate.com



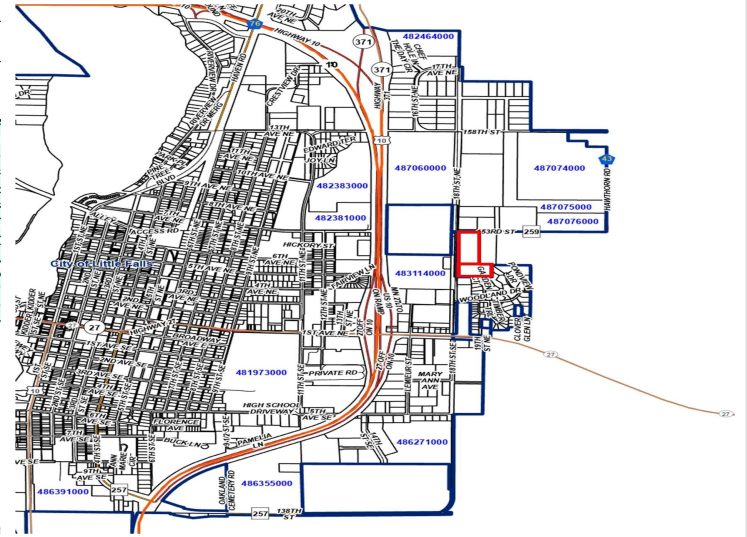
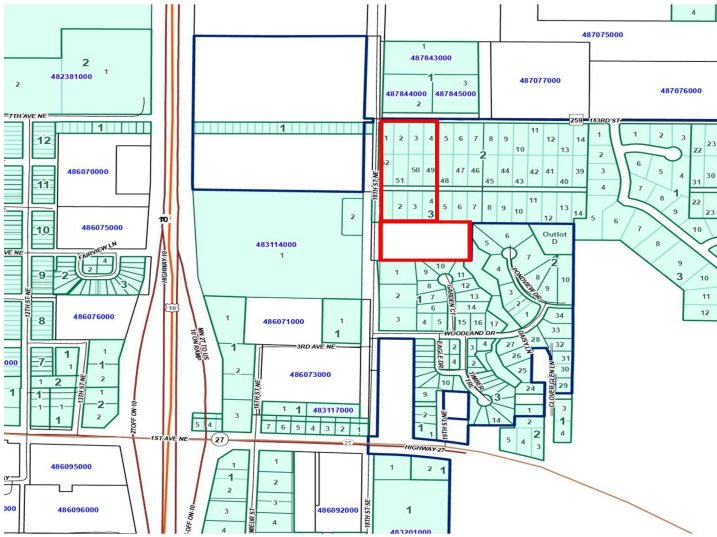
Affinity Real Estate - 600 Park Avenue South - Park Rapids MN 56470



website: www.AffinityRealEstate.com | email: info@affinityrealestate.com | office: 218-237-3333 | fax: 218-237-3377



\$699,000
MLS 7023229 Land
15541 153rd Street
Little Falls MN 56345



website: www.AffinityRealEstate.com | email: info@affinityrealestate.com | office: 218-237-3333 | fax: 218-237-3377



\$699,000
 MLS 7023229 Land
 15541 153rd Street
 Little Falls MN 56345