



MLS 7023436 Residential

\$220,000

1,296 sq ft
4 bedrooms
2 baths

43927 Meadow Brook Drive
Clitherall MN 56524

Status: Active

Description:

Enjoy quiet country living with this beautifully remodeled 4 bedroom, 2 bath manufactured home set on 5 acres. The home features a spacious primary suite with an attached bath and two walk-in closets, plus a bright, open layout with new sheetrock, flooring, lighting, and many updates throughout. Step outside to a brand-new deck where you can relax and take in the beautiful views. The property includes an insulated 3+ stall garage, perfect for vehicles, hobbies, or extra storage. Surrounded by trees and wildlife, this location offers peace, privacy, and great hunting opportunities. Truly move-in ready—all the hard work has been done!

Additional Details:

Year Built	2000
Lot Acres	5
Lot Dimensions	5Ac
Garage Stalls	3
School District	1941
Taxes	\$1,058
Taxes with Assessments	\$1,058
Tax Year	2025

Additional Features:

Basement: None **Fuel:** Array **Garage:** 3 **Heat:** Forced Air **Sewer:** Septic System Compliant - Yes, Tank with Drainage Field **Water:** Well **Air Conditioning:** Central Air

Driving Directions:

From Highway 210 go north on Nidaros Church Dr. for .2 miles, home will be on your right.



Listed By:
Keller Williams Realty Professionals

Affinity Real Estate Inc. participates in the Regional Multiple Listing Service of Minnesota, Inc Broker Reciprocity (sm) program, allowing us to display other broker's listings on our website. All properties are subject to prior sale, change or withdrawal.



Call Affinity Real Estate

218-237-3333

info@affinityrealestate.com



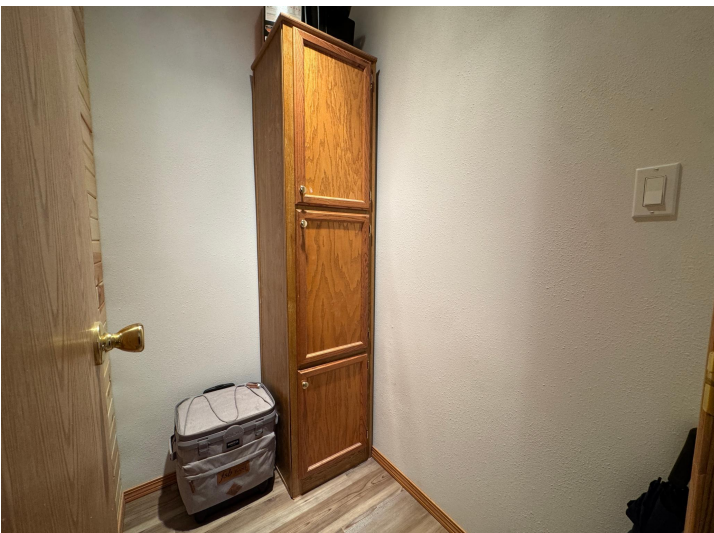
Affinity Real Estate - 600 Park Avenue South - Park Rapids MN 56470



website: www.AffinityRealEstate.com | email: info@affinityrealestate.com | office: 218-237-3333 | fax: 218-237-3377



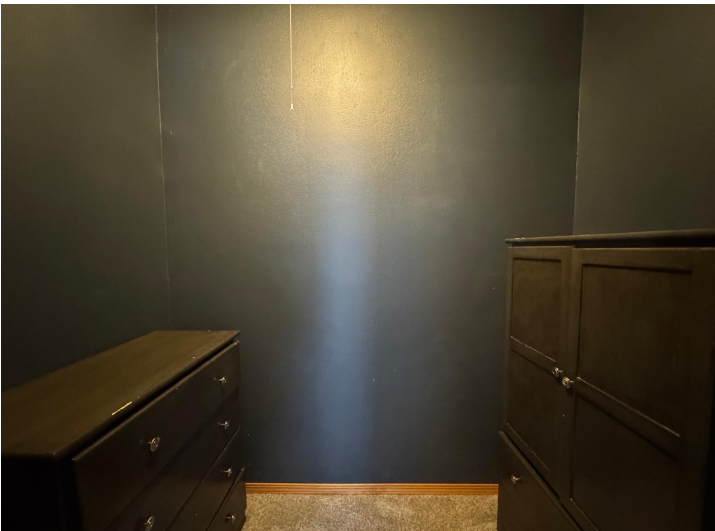
\$220,000
 MLS 7023436 Residential
 43927 Meadow Brook Drive
 Clitherall MN 56524



website: www.AffinityRealEstate.com | email: info@affinityrealestate.com | office: 218-237-3333 | fax: 218-237-3377

Affinity
REAL ESTATE INC

\$220,000
MLS 7023436 Residential
43927 Meadow Brook Drive
Clitherall MN 56524



website: www.AffinityRealEstate.com | email: info@affinityrealestate.com | office: 218-237-3333 | fax: 218-237-3377



\$220,000
MLS 7023436 Residential
43927 Meadow Brook Drive
Clitherall MN 56524



website: www.AffinityRealEstate.com | email: info@affinityrealestate.com | office: 218-237-3333 | fax: 218-237-3377



\$220,000
 MLS 7023436 Residential
 43927 Meadow Brook Drive
 Clitherall MN 56524



website: www.AffinityRealEstate.com | email: info@affinityrealestate.com | office: 218-237-3333 | fax: 218-237-3377



\$220,000
MLS 7023436 Residential
43927 Meadow Brook Drive
Clitherall MN 56524



website: www.AffinityRealEstate.com | email: info@affinityrealestate.com | office: 218-237-3333 | fax: 218-237-3377



\$220,000
 MLS 7023436 Residential
 43927 Meadow Brook Drive
 Clitherall MN 56524



website: www.AffinityRealEstate.com | email: info@affinityrealestate.com | office: 218-237-3333 | fax: 218-237-3377



\$220,000

MLS 7023436 Residential
43927 Meadow Brook Drive
Clitherall MN 56524

