



MLS 7023594 Land

\$109,900

2.78 Acres

Raw Land

8366 Hidden Creek Court
Pequot Lakes MN 56472

Status: Active

Description:

Rare Waterfront Opportunity in Pequot Lakes Lake Country! This stunning 2.78-acre wooded lot offers 199 feet of natural stream frontage, with crystal-clear water flowing from Clear Lake to Ossawinnamakee Lake creating a picturesque and tranquil setting. Build-ready with driveway installed and building site cleared! Situated on high ground with panoramic water views, this property features medium tree coverage for privacy, excellent sandy lake bottom, and gently rolling topography. Underground utilities available including fiber optic internet. Paved township streets in the Hidden Creek Hills development. Enjoy the best of Minnesota lake country with nearby golf courses, recreation, and year-round activities. Includes 1/8 undivided interest in Outlots A & B. Call for more details.

Additional Details:

Lot Acres	2.78
Lot Dimensions	426x526x173x474
School District	909
Taxes	\$166
Taxes with Assessments	\$166
Tax Year	2025

Additional Features:

Driving Directions:

County Road 16 to Forest Knolls Road to Hidden Creek Court.



Listed By:
Coldwell Banker Crown Realtors

Affinity Real Estate Inc. participates in the Regional Multiple Listing Service of Minnesota, Inc Broker Reciprocity (sm) program, allowing us to display other broker's listings on our website. All properties are subject to prior sale, change or withdrawal.



Call Affinity Real Estate

218-237-3333

info@affinityrealestate.com



Affinity Real Estate - 600 Park Avenue South - Park Rapids MN 56470



website: www.AffinityRealEstate.com | email: info@affinityrealestate.com | office: 218-237-3333 | fax: 218-237-3377



\$109,900
 MLS 7023594 Land
 8366 Hidden Creek Court
 Pequot Lakes MN 56472



website: www.AffinityRealEstate.com | email: info@affinityrealestate.com | office: 218-237-3333 | fax: 218-237-3377



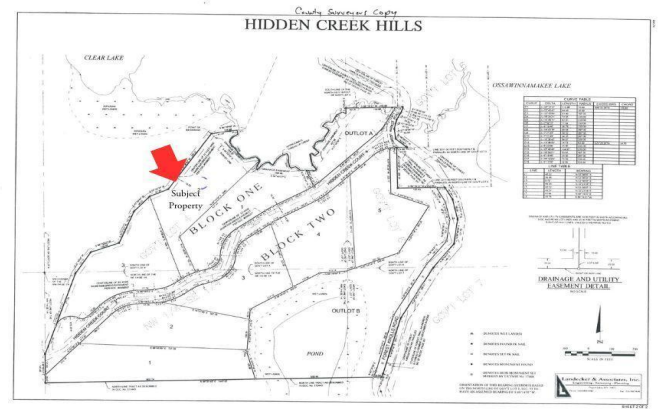
\$109,900
MLS 7023594 Land
8366 Hidden Creek Court
Pequot Lakes MN 56472



website: www.AffinityRealEstate.com | email: info@affinityrealestate.com | office: 218-237-3333 | fax: 218-237-3377



\$109,900
 MLS 7023594 Land
 8366 Hidden Creek Court
 Pequot Lakes MN 56472



website: www.AffinityRealEstate.com | email: info@affinityrealestate.com | office: 218-237-3333 | fax: 218-237-3377



\$109,900
 MLS 7023594 Land
 8366 Hidden Creek Court
 Pequot Lakes MN 56472