



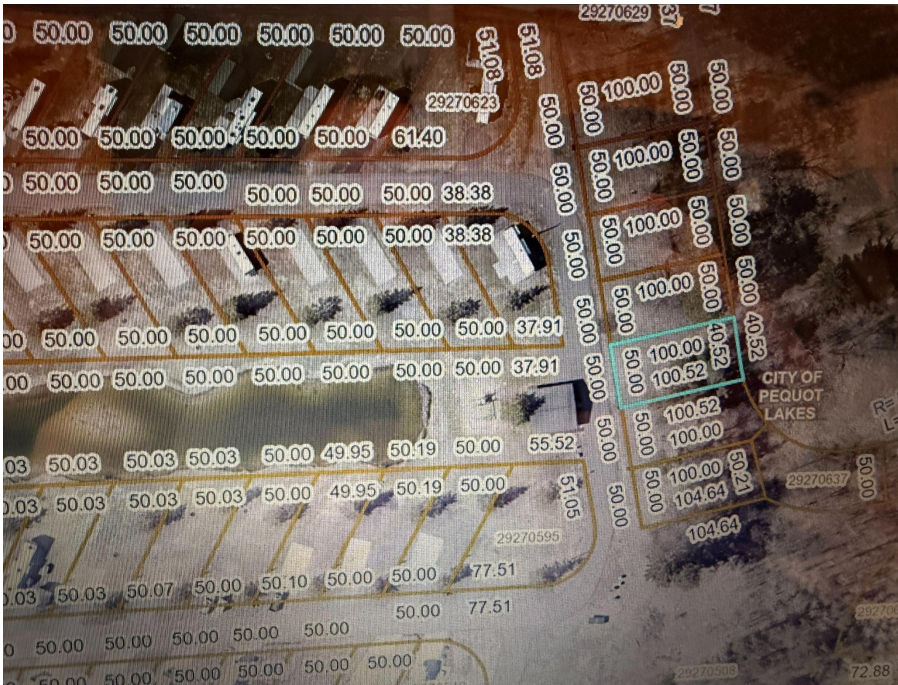
MLS 7024245 Land

**\$10,500**

0.11 Acres  
Raw Land

28668 Hurtig  
Pequot Lakes MN 56472

Status: Active



**Description:**

Great opportunity to own a lot in the Preserve RV park. This lot has electric hookup. Park included paved roads and a shower/bath facility open to lot owners.

**Additional Details:**

Lot Acres	0.11
Lot Dimensions	50x100
School District	909
Taxes	\$90
Taxes with Assessments	\$90
Tax Year	2025

**Additional Features:**

**Driving Directions:**

From Brainerd, north on 371 to a left on Patriot Ave, to the first left to a left on hurtig road. Gate opening is on the left.



Listed By:  
Weichert REALTORS Tower Properties

Affinity Real Estate Inc. participates in the Regional Multiple Listing Service of Minnesota, Inc Broker Reciprocity (sm) program, allowing us to display other broker's listings on our website. All properties are subject to prior sale, change or withdrawal.



Call Affinity Real Estate

**218-237-3333**

[info@affinityrealestate.com](mailto:info@affinityrealestate.com)



Affinity Real Estate - 600 Park Avenue South - Park Rapids MN 56470



website: [www.AffinityRealEstate.com](http://www.AffinityRealEstate.com) | email: [info@affinityrealestate.com](mailto:info@affinityrealestate.com) | office: 218-237-3333 | fax:218-237-3377



**\$10,500**  
MLS 7024245 Land  
28668 Hurtig  
Pequot Lakes MN 56472