



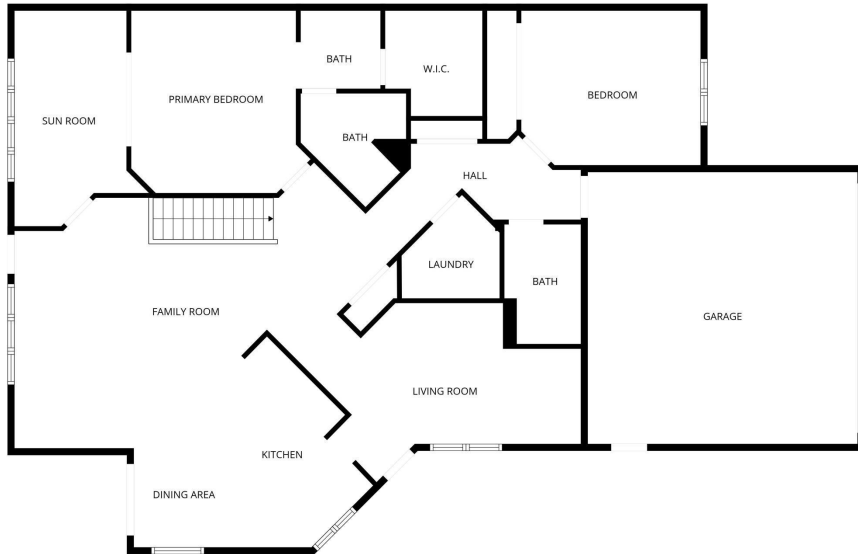
MLS 7024255 Residential

\$500,000

3,384 sq ft
3 bedrooms
3 baths

507 Waterfront Way
Bemidji MN 56601

Status: Pending



FLOOR PLAN CREATED BY CUBICASA APP. MEASUREMENTS DEEMED HIGHLY RELIABLE BUT NOT GUARANTEED.

Description:

Pending before print. Entered for statistical purposes.

Additional Details:

Year Built	2000
Lot Acres	0.05
Lot Dimensions	34x52
Garage Stalls	2
School District	1386
Taxes	\$4,812
Taxes with Assessments	\$4,812
Tax Year	2025

Additional Features:

Basement: Finished **Fuel:** Array **Garage:** 2 **Heat:** Forced Air, Fireplace(s) **Sewer:** City Sewer/Connected **Water:** City Water/Connected **Air Conditioning:** Central Air

Driving Directions:

South on Washington Ave, right on Roosevelt Rd, right on Waterfront Way.



Listed By:
Century 21 Dickinson

Affinity Real Estate Inc. participates in the Regional Multiple Listing Service of Minnesota, Inc Broker Reciprocity (sm) program, allowing us to display other broker's listings on our website. All properties are subject to prior sale, change or withdrawal.



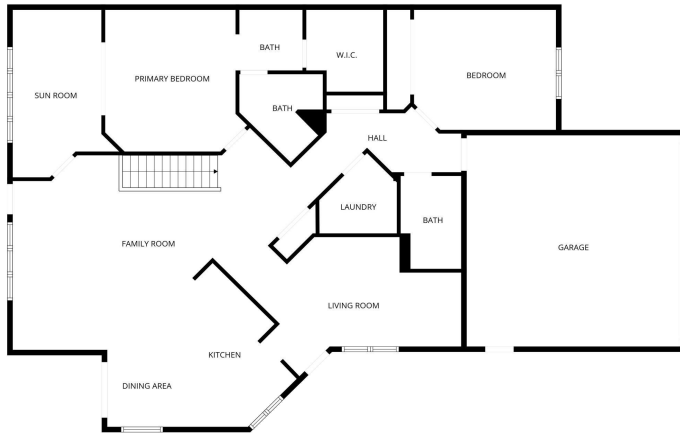
Call Affinity Real Estate

218-237-3333

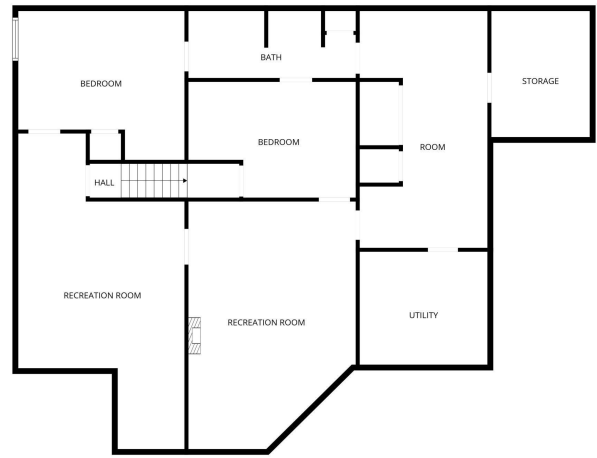
info@affinityrealestate.com



Affinity Real Estate - 600 Park Avenue South - Park Rapids MN 56470



FLOOR PLAN CREATED BY CURICASA APP. MEASUREMENTS DEEMED HIGHLY RELIABLE BUT NOT GUARANTEED.



FLOOR PLAN CREATED BY CURICASA APP. MEASUREMENTS DEEMED HIGHLY RELIABLE BUT NOT GUARANTEED.

website: www.AffinityRealEstate.com | email: info@affinityrealestate.com | office: 218-237-3333 | fax: 218-237-3377



\$500,000
 MLS 7024255 Residential
 507 Waterfront Way
 Bemidji MN 56601