



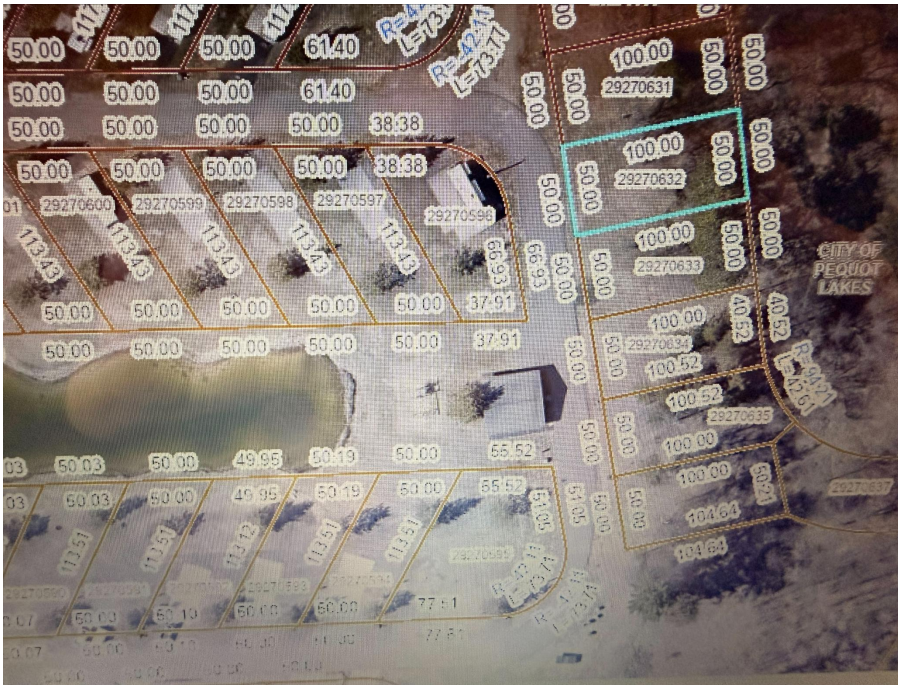
MLS 7024259 Land

\$10,500

0.11 Acres
Raw Land

28668 Lot 48 Hurt
Pequot Lakes MN 56472

Status: Active



Description:

Great opportunity to own a lot in the Preserve RV park. This lot has electric hookup. Park included paved roads and a shower/bath facility open to lot owners.

Additional Details:

Lot Acres	0.11
Lot Dimensions	50x100
School District	186
Taxes	\$90
Taxes with Assessments	\$90
Tax Year	2025

Additional Features:

Driving Directions:

From Brainerd, north on 371 to a left on Patriot Ave, to the first left to a left on hurtig road. Gate opening is on the left.



Listed By:
Weichert REALTORS Tower Properties

Affinity Real Estate Inc. participates in the Regional Multiple Listing Service of Minnesota, Inc Broker Reciprocity (sm) program, allowing us to display other broker's listings on our website. All properties are subject to prior sale, change or withdrawal.



Call Affinity Real Estate

218-237-3333

info@affinityrealestate.com



Affinity Real Estate - 600 Park Avenue South - Park Rapids MN 56470



website: www.AffinityRealEstate.com | email: info@affinityrealestate.com | office: 218-237-3333 | fax:218-237-3377



\$10,500
MLS 7024259 Land
28668 Lot 48 Hurt
Pequot Lakes MN 56472