



MLS 7024705 Residential

\$425,000

1,500 sq ft
3 bedrooms
3 baths

2149 Birch Park Drive
Backus MN 56435

Status: Pending

Description:

Welcome to this beautifully crafted 3-bedroom, 2-bath patio home set on 3.02 private acres in Backus, MN—offering peaceful country living with modern comfort and exceptional functionality. This open-concept home features tongue-and-groove ceilings and accent walls that add warmth and character throughout the living spaces. The kitchen is designed for both everyday living and entertaining with rich hickory cabinets, a large center island, stainless steel appliances, and a sunlit window overlooking the property. The spacious primary suite includes a walk-in closet and private bathroom with a walk-in shower plus a separate tub/shower combination. A convenient mudroom and laundry/utility room combo sits just off the kitchen, complete with a utility sink and separate exterior access—perfect for rural living. Heating options include in-floor heat, a ductless mini-split, and a cozy wood-burning stove, offering efficiency and comfort year-round. Outside, enjoy excellent curb appeal with a durable and attractive exterior featuring Hardy board, metal, and cedar accents. The impressive 42x40 shed includes a 30x40 heated shop with two garage doors, bathroom and an additional 12x40 cold storage area—ideal for a workshop, storage, or recreational toys. A dedicated wood shed adds even more convenience. This property offers the perfect blend of space, privacy, and versatility—ideal for those seeking acreage, a heated shop, and one-level living in the Backus area.

Additional Details:

Year Built	2021
Lot Acres	3.04
Lot Dimensions	200x629.2x200x629.2
Garage Stalls	3
School District	1065
Taxes	\$1,474
Taxes with Assessments	\$1,540
Tax Year	2025

Additional Features:

Fuel: Array **Heat:** Ductless Mini-Split, In-Floor Heating, Wood Stove

Driving Directions:

In Backus take MN 371N and turn right onto MN 87E for 8.7 miles. Continue straight onto Birch Park Drive for .1 miles and left onto Rock Cross Lane. Turn right onto property.



Call Affinity Real Estate
218-237-3333
info@affinityrealestate.com



Affinity Real Estate - 600 Park Avenue South - Park Rapids MN 56470



website: www.AffinityRealEstate.com | email: info@affinityrealestate.com | office: 218-237-3333 | fax:218-237-3377



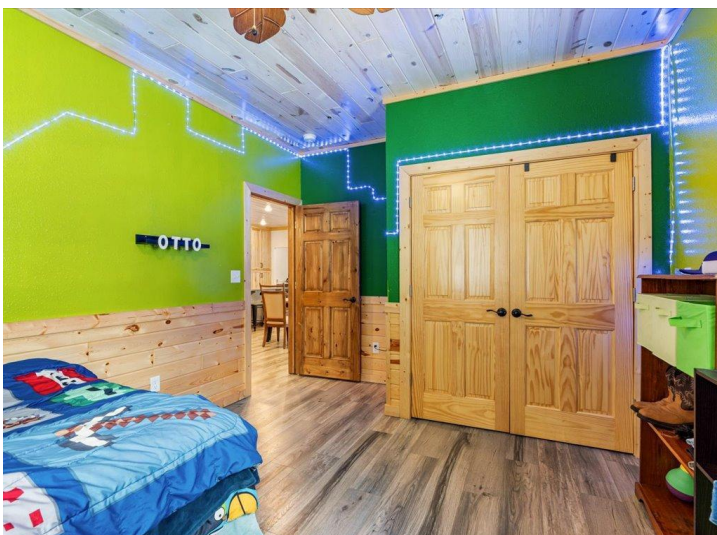
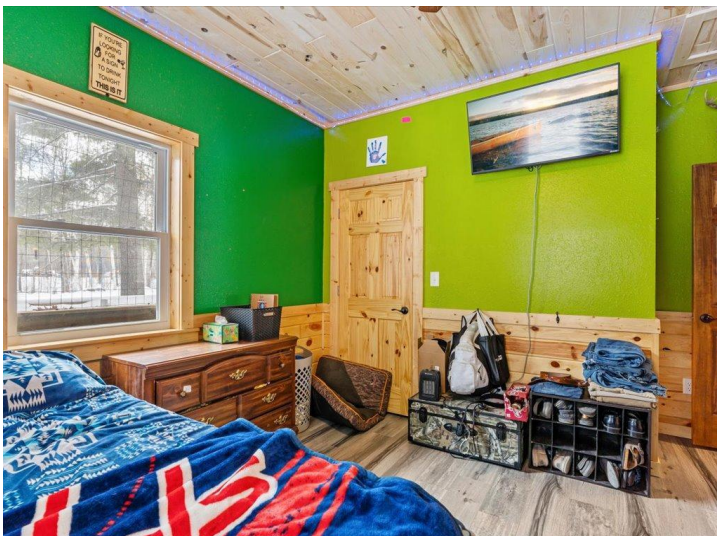
\$425,000
MLS 7024705 Residential
2149 Birch Park Drive
Backus MN 56435



website: www.AffinityRealEstate.com | email: info@affinityrealestate.com | office: 218-237-3333 | fax: 218-237-3377

Affinity
REAL ESTATE INC

\$425,000
MLS 7024705 Residential
2149 Birch Park Drive
Backus MN 56435



website: www.AffinityRealEstate.com | email: info@affinityrealestate.com | office: 218-237-3333 | fax: 218-237-3377

Affinity
REAL ESTATE INC

\$425,000
MLS 7024705 Residential
2149 Birch Park Drive
Backus MN 56435



website: www.AffinityRealEstate.com | email: info@affinityrealestate.com | office: 218-237-3333 | fax:218-237-3377

Affinity
REAL ESTATE INC

\$425,000
MLS 7024705 Residential
2149 Birch Park Drive
Backus MN 56435



website: www.AffinityRealEstate.com | email: info@affinityrealestate.com | office: 218-237-3333 | fax:218-237-3377



\$425,000
MLS 7024705 Residential
2149 Birch Park Drive
Backus MN 56435



website: www.AffinityRealEstate.com | email: info@affinityrealestate.com | office: 218-237-3333 | fax:218-237-3377



\$425,000
MLS 7024705 Residential
2149 Birch Park Drive
Backus MN 56435



website: www.AffinityRealEstate.com | email: info@affinityrealestate.com | office: 218-237-3333 | fax:218-237-3377



\$425,000
MLS 7024705 Residential
2149 Birch Park Drive
Backus MN 56435



website: www.AffinityRealEstate.com | email: info@affinityrealestate.com | office: 218-237-3333 | fax:218-237-3377



\$425,000
MLS 7024705 Residential
2149 Birch Park Drive
Backus MN 56435