



MLS 7024788 Residential

\$439,900

2,136 sq ft
3 bedrooms
3 baths

230 Shedhorn Street
Bemidji MN 56601

Status: Active

Description:

Custom built in 2022, this exquisite residence combines modern living with thoughtful design and high-quality materials. Boasting three spacious bedrooms and three bathrooms, the home is crafted for convenience, style, and comfort. The main level is designed for effortless one-level living grounded with warm hickory flooring and a marble clad gas fireplace. The primary bedroom comfortably accommodates a king-size bed and is complete with a private bathroom and walk-in closet. The ensuite has elegantly tiled floors, a soaking tub and a glass-enclosed tiled shower providing a spa-like retreat. Additionally, the main floor includes a laundry room and office space, perfect for remote work or quiet study. The heart of a home is always the kitchen, and this one is centered around a stunning granite covered island measuring 8 feet by 4 feet. This impressive centerpiece complements the stainless-steel appliances and extensive cabinetry equipped with soft-close drawers. Upstairs, two additional bedrooms share a full bath, providing privacy and comfort for family members or guests. The asphalt driveway leads to your attached, finished and heated 2 stall garage. Enjoy the outdoors from either the covered front porch or the covered back patio. This residence exemplifies thoughtful design and quality craftsmanship and offers a comfortable lifestyle for its future owners. Discerning buyers will appreciate.

Additional Details:


| | |
|------------------------|---------|
| Year Built | 2022 |
| Lot Acres | 0.32 |
| Lot Dimensions | 78x175 |
| Garage Stalls | 2 |
| School District | 1386 |
| Taxes | \$4,816 |
| Taxes with Assessments | \$4,816 |
| Tax Year | 2025 |

Additional Features:

Fuel: Array **Heat:** Forced Air

Driving Directions:

South out of Bemidji on 197/Washington Ave S to Shedhorn St (immediately after the overhead bike trail). Right on Shedhorn, stay on street to the left. Home on the left.



Listed By:
Lake-N-Woods Realty

Affinity Real Estate Inc. participates in the Regional Multiple Listing Service of Minnesota, Inc Broker Reciprocity (sm) program, allowing us to display other broker's listings on our website. All properties are subject to prior sale, change or withdrawal.



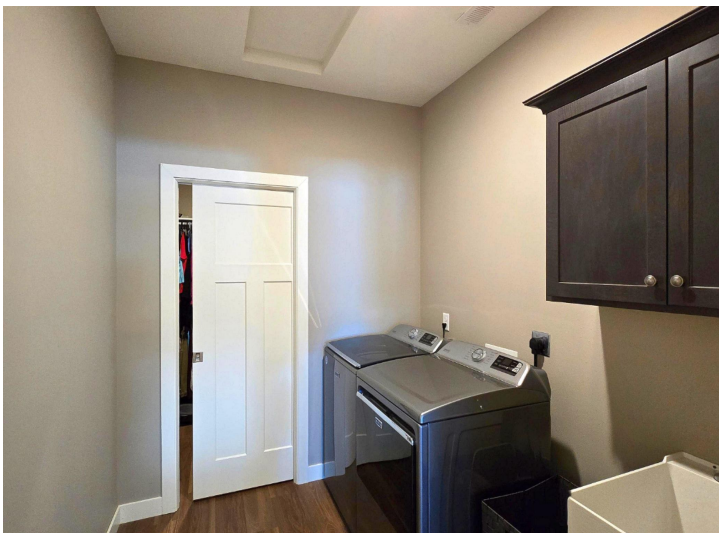
Call Affinity Real Estate

218-237-3333

info@affinityrealestate.com



Affinity Real Estate - 600 Park Avenue South - Park Rapids MN 56470



website: www.AffinityRealEstate.com | email: info@affinityrealestate.com | office: 218-237-3333 | fax:218-237-3377



\$439,900
MLS 7024788 Residential
230 Shedhorn Street
Bemidji MN 56601



website: www.AffinityRealEstate.com | email: info@affinityrealestate.com | office: 218-237-3333 | fax: 218-237-3377

Affinity
REAL ESTATE INC

\$439,900
MLS 7024788 Residential
230 Shedhorn Street
Bemidji MN 56601



website: www.AffinityRealEstate.com | email: info@affinityrealestate.com | office: 218-237-3333 | fax:218-237-3377



\$439,900
MLS 7024788 Residential
230 Shedhorn Street
Bemidji MN 56601



website: www.AffinityRealEstate.com | email: info@affinityrealestate.com | office: 218-237-3333 | fax:218-237-3377

Affinity
REAL ESTATE INC

\$439,900
MLS 7024788 Residential
230 Shedhorn Street
Bemidji MN 56601



website: www.AffinityRealEstate.com | email: info@affinityrealestate.com | office: 218-237-3333 | fax: 218-237-3377



\$439,900
MLS 7024788 Residential
230 Shedhorn Street
Bemidji MN 56601