



MLS 7024822 Residential

**\$318,900**

2,360 sq ft  
5 bedrooms  
2 baths

5422 State 87  
Backus MN 56435

Status: Active

**Description:**

Experience the perfect blend of peaceful country living and everyday convenience in this spacious 5-bedroom, 2-bath home! This property offers the privacy and open space you've been dreaming of—while still being just minutes from town and the Pine River-Backus School District.

Inside, you'll find generous living spaces with room for everyone. The five bedrooms provide flexibility for a growing household, home office, guest rooms, or hobby spaces. Two full bathrooms add comfort and functionality for busy mornings and family life.

Step outside and enjoy wide-open space perfect for gardening, recreation, or simply relaxing and taking in the fresh country air. Whether you envision bonfires under the stars, space for pets, or room to build that dream outbuilding, this property offers endless possibilities.


If you're looking for small-town convenience with a country lifestyle, this home truly offers the best of both worlds. Schedule your showing today and discover the space, comfort, and location you've been waiting for!

**Additional Details:**

|                        |         |
|------------------------|---------|
| Year Built             | 2002    |
| Lot Acres              | 3.29    |
| Lot Dimensions         | 828x185 |
| Garage Stalls          | 2       |
| School District        | 1065    |
| Taxes                  | \$702   |
| Taxes with Assessments | \$768   |
| Tax Year               | 2025    |

**Additional Features:**

**Basement:** Finished, Walkout **Fuel:** Array **Garage:** 2 **Heat:** Boiler, Hot Water, Wood Stove **Sewer:** Private Sewer **Water:** Drilled, Well **Air Conditioning:** Window Unit(s)

 Listed By:  
Goldwell Banker Realty

RIGHT, Real Estate Inc. participates in the Regional Multiple Listing Service of Minnesota, Inc Broker Reciprocity (sm) program, allowing us to display other broker's listings on our website. All properties are subject to prior sale, change or withdrawal.



**Call Affinity Real Estate**

**218-237-3333**

**info@affinityrealestate.com**

STATE HWY 87, TO JUST PAST PINE MOUNTAIN ROAD, TO #5422 STATE HWY 87 SW ON THE



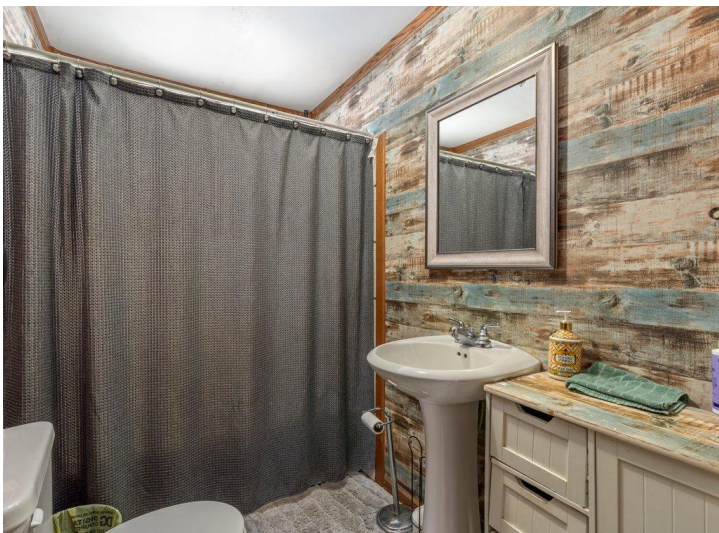
**Affinity Real Estate - 600 Park Avenue South - Park Rapids MN 56470**



website: [www.AffinityRealEstate.com](http://www.AffinityRealEstate.com) | email: [info@affinityrealestate.com](mailto:info@affinityrealestate.com) | office: 218-237-3333 | fax:218-237-3377



**\$318,900**  
MLS 7024822 Residential  
5422 State 87  
Backus MN 56435



website: [www.AffinityRealEstate.com](http://www.AffinityRealEstate.com) | email: [info@affinityrealestate.com](mailto:info@affinityrealestate.com) | office: 218-237-3333 | fax: 218-237-3377

**Affinity**  
REAL ESTATE INC

**\$318,900**  
MLS 7024822 Residential  
5422 State 87  
Backus MN 56435



website: [www.AffinityRealEstate.com](http://www.AffinityRealEstate.com) | email: [info@affinityrealestate.com](mailto:info@affinityrealestate.com) | office: 218-237-3333 | fax:218-237-3377

**Affinity**  
REAL ESTATE INC

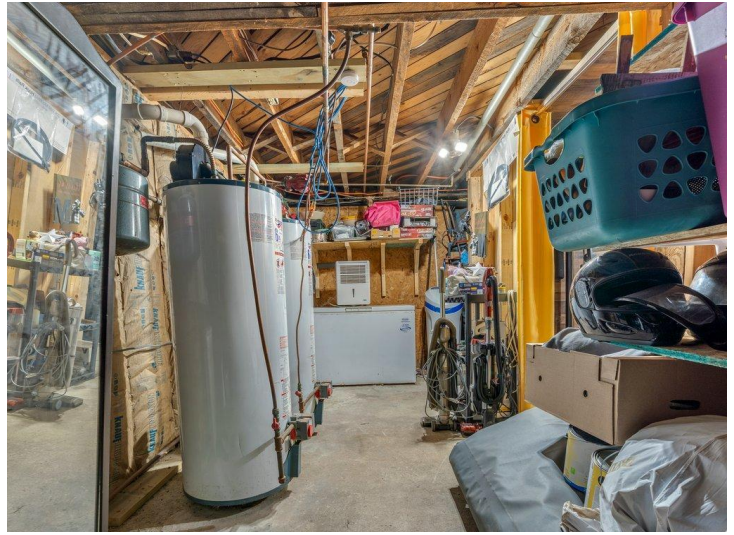
**\$318,900**  
MLS 7024822 Residential  
5422 State 87  
Backus MN 56435



website: [www.AffinityRealEstate.com](http://www.AffinityRealEstate.com) | email: [info@affinityrealestate.com](mailto:info@affinityrealestate.com) | office: 218-237-3333 | fax: 218-237-3377

**Affinity**  
REAL ESTATE INC

**\$318,900**  
MLS 7024822 Residential  
5422 State 87  
Backus MN 56435



website: [www.AffinityRealEstate.com](http://www.AffinityRealEstate.com) | email: [info@affinityrealestate.com](mailto:info@affinityrealestate.com) | office: 218-237-3333 | fax: 218-237-3377

**Affinity**  
REAL ESTATE INC

**\$318,900**  
MLS 7024822 Residential  
5422 State 87  
Backus MN 56435



website: [www.AffinityRealEstate.com](http://www.AffinityRealEstate.com) | email: [info@affinityrealestate.com](mailto:info@affinityrealestate.com) | office: 218-237-3333 | fax:218-237-3377



**\$318,900**  
MLS 7024822 Residential  
5422 State 87  
Backus MN 56435



website: [www.AffinityRealEstate.com](http://www.AffinityRealEstate.com) | email: [info@affinityrealestate.com](mailto:info@affinityrealestate.com) | office: 218-237-3333 | fax:218-237-3377



**\$318,900**  
MLS 7024822 Residential  
5422 State 87  
Backus MN 56435