

MLS 7025158 Land

\$250,000

65 Acres
Raw Land

TBD Arbor Road
Park Rapids MN 56470

Status: Active

Description:

Located just south of Park Rapids and a stones throw from the south tip of Long Lake. Looking for a hunting camp, year round home site or a place park your camper in the Park Rapids/Nevis area and all it has to offer ? WELL HERE IT IS !!! A drive way leads you through mature trees, to a cleared camping area and potential build site. The property has a variety of habitats including mature pines and hardwoods, low land and a power line easement. Making this a great hunting property for deer, bear and turkeys with food, cover, bedding and open areas. Bordering over 100 acres of state land and close to agricultural land. This area is known for big whitetail bucks. The Paul Bunyan State Trail is minutes away for biking, hiking, and snowmobiling and ATV's for your year-round enjoyment. And all in the big woods of northern Minnesota in beautiful Hubbard County !!!

Additional Details:

Lot Acres	65
Lot Dimensions	irregular
School District	1384
Taxes	\$550
Taxes with Assessments	\$550
Tax Year	2025

Additional Features:

Driving Directions:

From Park Rapids South on to US 71, 4 miles to Lt onto Hwy 87, 4 miles to Rt onto 6/Lake St, to Rt onto Arbor Rd, .3 miles to sign and Drive way on the Lt.



Listed By:
Timber Ghost Realty, LLC

Affinity Real Estate Inc. participates in the Regional Multiple Listing Service of Minnesota, Inc Broker Reciprocity (sm) program, allowing us to display other broker's listings on our website. All properties are subject to prior sale, change or withdrawal.



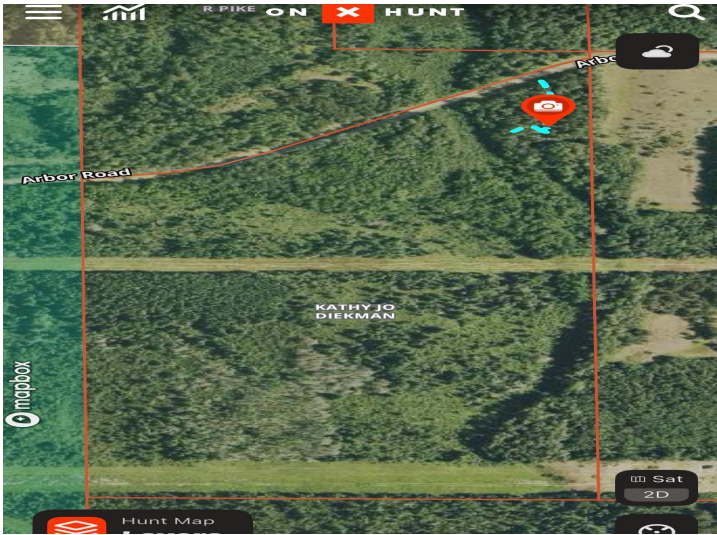
Call Affinity Real Estate

218-237-3333

info@affinityrealestate.com



Affinity Real Estate - 600 Park Avenue South - Park Rapids MN 56470



website: www.AffinityRealEstate.com | email: info@affinityrealestate.com | office: 218-237-3333 | fax: 218-237-3377



\$250,000
MLS 7025158 Land
TBD Arbor Road
Park Rapids MN 56470



website: www.AffinityRealEstate.com | email: info@affinityrealestate.com | office: 218-237-3333 | fax:218-237-3377



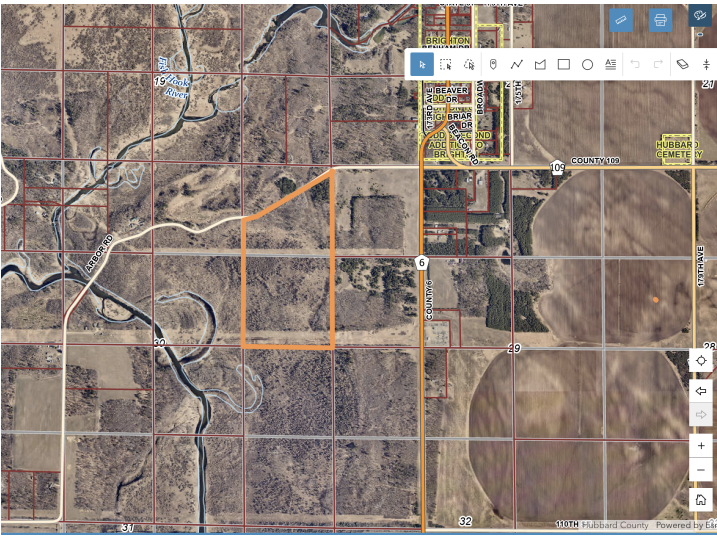
\$250,000
MLS 7025158 Land
TBD Arbor Road
Park Rapids MN 56470



website: www.AffinityRealEstate.com | email: info@affinityrealestate.com | office: 218-237-3333 | fax:218-237-3377



\$250,000
MLS 7025158 Land
TBD Arbor Road
Park Rapids MN 56470



website: www.AffinityRealEstate.com | email: info@affinityrealestate.com | office: 218-237-3333 | fax:218-237-3377



\$250,000
MLS 7025158 Land
TBD Arbor Road
Park Rapids MN 56470

website: www.AffinityRealEstate.com | email: info@affinityrealestate.com | office: 218-237-3333 | fax:218-237-3377



\$250,000

MLS 7025158 Land
TBD Arbor Road
Park Rapids MN 56470