



MLS 7026096 Commercial

\$0

142 Paul Bunyan Drive  
Bemidji MN 56601

Status: Active

**Description:**

Versatile commercial space offering an open-concept layout with excellent flexibility for retail, studio, showroom, or light production use. The property features a spacious main area measuring approximately 37'6" x 26'8", providing ample room for displays, workstations, or customer engagement.

Large front windows and a glass entry door allow for natural light and street visibility. The interior includes a secondary room measuring approximately 11'5" x 26'8", along with additional private rooms suitable for office, storage, or specialty use. An ADA-accessible restroom adds convenience and functionality.

Additional highlights include overhead lighting throughout, durable flooring, shelving and workspace areas, a utility sink, and dedicated back-of-house workspace. The practical floor plan supports a variety of business operations with clearly defined work and support areas.

**Additional Details:**

Year Built	1942
Lot Acres	0.495
Lot Dimensions	150x142
School District	1386
Taxes	\$15,824
Taxes with Assessments	\$15,824
Tax Year	2025

**Additional Features:**

**Basement:** None **Fuel:** Array **Heat:** Forced Air **Sewer:** City Sewer/Connected **Water:** City Water/Connected **Air Conditioning:** Central Air

**Driving Directions:**

142 Paul Bunyan. Big Horn Building



Listed By:  
EXIT MN Lakes Realty

Affinity Real Estate Inc. participates in the Regional Multiple Listing Service of Minnesota, Inc Broker Reciprocity (sm) program, allowing us to display other broker's listings on our website. All properties are subject to prior sale, change or withdrawal.



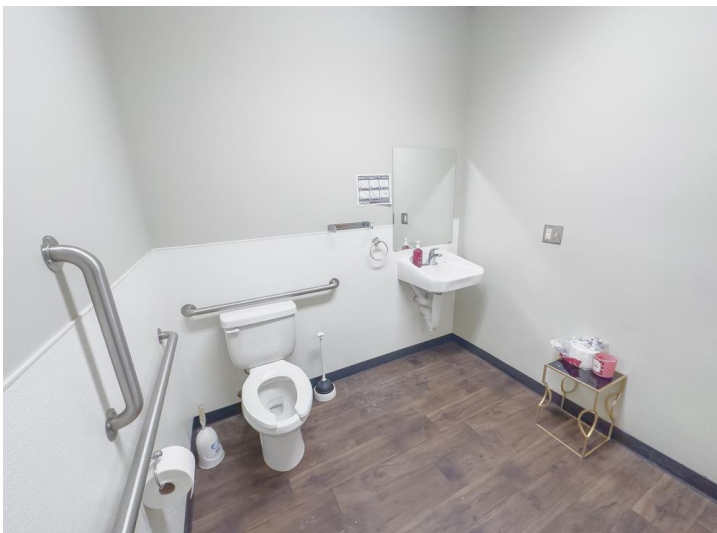
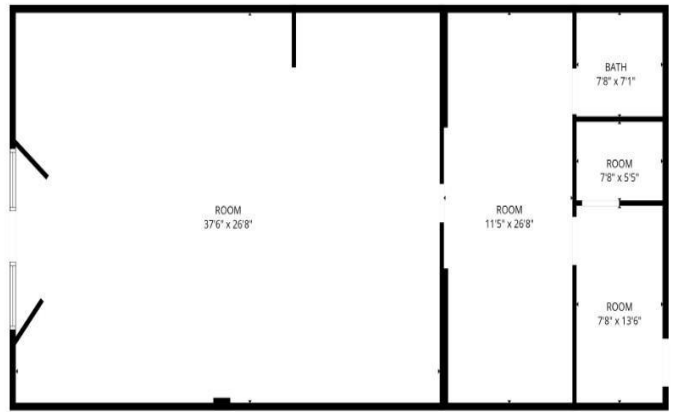
Call Affinity Real Estate

218-237-3333

info@affinityrealestate.com



Affinity Real Estate - 600 Park Avenue South - Park Rapids MN 56470



website: [www.AffinityRealEstate.com](http://www.AffinityRealEstate.com) | email: [info@affinityrealestate.com](mailto:info@affinityrealestate.com) | office: 218-237-3333 | fax: 218-237-3377



**\$0**  
MLS 7026096 Commercial  
142 Paul Bunyan Drive  
Bemidji MN 56601



website: [www.AffinityRealEstate.com](http://www.AffinityRealEstate.com) | email: [info@affinityrealestate.com](mailto:info@affinityrealestate.com) | office: 218-237-3333 | fax: 218-237-3377



**\$0**  
MLS 7026096 Commercial  
142 Paul Bunyan Drive  
Bemidji MN 56601

website: [www.AffinityRealEstate.com](http://www.AffinityRealEstate.com) | email: [info@affinityrealestate.com](mailto:info@affinityrealestate.com) | office: 218-237-3333 | fax:218-237-3377



**\$0**  
MLS 7026096 Commercial  
142 Paul Bunyan Drive  
Bemidji MN 56601