



MLS 7026244 Residential

\$565,000

4,021 sq ft
4 bedrooms
4 baths

13849 Leaf River Road
Wadena MN 56482

Status: Active

Description:

Welcome to 13849 Leaf River Road in Wadena—beautifully positioned overlooking the green on Hole #11 of Whitetail Run Golf Course. This 4,021 sq ft home features 4 bedrooms and 4 bathrooms with spacious, comfortable living throughout. A stunning dual-sided fireplace connects the living room and primary suite, creating a warm and inviting focal point. The oversized primary suite offers a private retreat with generous space, comfort, and great separation from the rest of the home. Large windows throughout fill the home with natural light while capturing scenic views of the green and surrounding fairways. Step outside to a huge deck overlooking the green—perfect for relaxing, entertaining, or enjoying peaceful evenings watching golfers finish the hole. The backyard also features a paved basketball court, adding a fun and functional space for recreation. Additional highlights include a dedicated fitness room complete with a sauna and a spacious 3-car garage for ample storage. A rare opportunity to enjoy golf course living with space, privacy, and convenience just minutes from Wadena amenities.

Additional Details:

Year Built	1997
Lot Acres	0.971
Lot Dimensions	200x253
Garage Stalls	3
School District	1053
Taxes	\$6,318
Taxes with Assessments	\$6,388
Tax Year	2025

Additional Features:

Basement: Block, Egress Window(s), Finished, Sump Basket, Walkout **Fuel:** Array **Garage:** 3 **Heat:** Forced Air, Fireplace(s) **Sewer:** Private Sewer **Water:** Private **Air Conditioning:** Central Air

Driving Directions:

From Wadena head N on U.S. Highway 71, Turn right by Whitetail Run Golf Course and follow on Leaf River Road to property on the right.



Listed By:
RE/MAX Advantage Plus

Affinity Real Estate Inc. participates in the Regional Multiple Listing Service of Minnesota, Inc Broker Reciprocity (sm) program, allowing us to display other broker's listings on our website. All properties are subject to prior sale, change or withdrawal.



Call Affinity Real Estate

218-237-3333

info@affinityrealestate.com



Affinity Real Estate - 600 Park Avenue South - Park Rapids MN 56470



website: www.AffinityRealEstate.com | email: info@affinityrealestate.com | office: 218-237-3333 | fax:218-237-3377



\$565,000
MLS 7026244 Residential
13849 Leaf River Road
Wadena MN 56482



website: www.AffinityRealEstate.com | email: info@affinityrealestate.com | office: 218-237-3333 | fax:218-237-3377

Affinity
REAL ESTATE INC

\$565,000
MLS 7026244 Residential
13849 Leaf River Road
Wadena MN 56482



website: www.AffinityRealEstate.com | email: info@affinityrealestate.com | office: 218-237-3333 | fax:218-237-3377



\$565,000
MLS 7026244 Residential
13849 Leaf River Road
Wadena MN 56482



website: www.AffinityRealEstate.com | email: info@affinityrealestate.com | office: 218-237-3333 | fax:218-237-3377



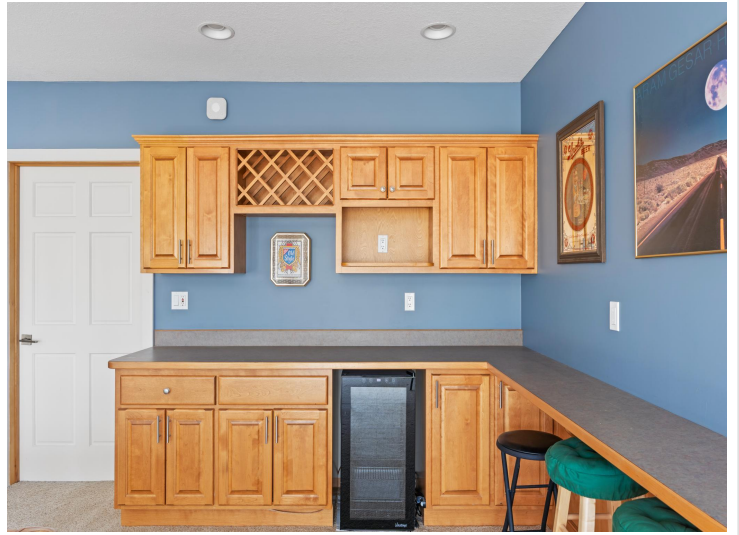
\$565,000
MLS 7026244 Residential
13849 Leaf River Road
Wadena MN 56482



website: www.AffinityRealEstate.com | email: info@affinityrealestate.com | office: 218-237-3333 | fax:218-237-3377

Affinity
REAL ESTATE INC

\$565,000
MLS 7026244 Residential
13849 Leaf River Road
Wadena MN 56482



website: www.AffinityRealEstate.com | email: info@affinityrealestate.com | office: 218-237-3333 | fax:218-237-3377



\$565,000
MLS 7026244 Residential
13849 Leaf River Road
Wadena MN 56482



website: www.AffinityRealEstate.com | email: info@affinityrealestate.com | office: 218-237-3333 | fax:218-237-3377



\$565,000
MLS 7026244 Residential
13849 Leaf River Road
Wadena MN 56482



website: www.AffinityRealEstate.com | email: info@affinityrealestate.com | office: 218-237-3333 | fax:218-237-3377



\$565,000
MLS 7026244 Residential
13849 Leaf River Road
Wadena MN 56482