



MLS 7027101 Residential

\$349,900

2,106 sq ft
4 bedrooms
2 baths

12770 County 18
Brainerd MN 56401

Status: Active

Description:

Welcome to your dream hobby farm! This charming 4-bedroom, 2-bath home sits on a spacious 10-acre parcel, perfect for those seeking country living close to town amenities and recreational areas. The property is an ideal setup for a hobby farm, featuring a dedicated barn and fenced-in pastures, currently home to horses.

The home offers a 2-car attached garage and comfortable living spaces. Recent updates ensure peace of mind and modern comfort, including a new metal roof, septic system, electrical upgrade, new siding, a refreshed deck, and a beautifully finished basement and entryway.

Enjoy the highly sought-after location—close to town and recreational areas—and move right into this beautifully updated farmstead!

Additional Details:

Year Built	1975
Lot Acres	10
Lot Dimensions	663x663x663x663
Garage Stalls	2
School District	726
Taxes	\$1,706
Taxes with Assessments	\$1,792
Tax Year	2026

Additional Features:

Basement: Egress Window(s), Finished, Full **Fuel:** Array **Garage:** 2 **Heat:** Forced Air **Sewer:** Private Sewer **Water:** Private, Sand Point, Well **Air Conditioning:** None

Driving Directions:

From MN 3/1/MN 210 intersection, go West on MN 210, to right onto MN 12. Call Affinity Real Estate. Property is on the



Listed By:
Positive Realty

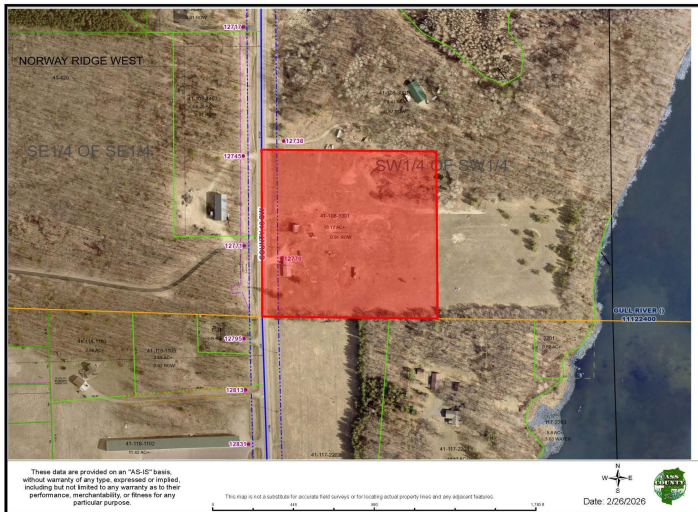
Affinity Real Estate Inc. participates in the Regional Multiple Listing Service of Minnesota, Inc Broker Reciprocity (sm) program, allowing us to display other broker's listings on our website. All properties are subject to prior sale, change or withdrawal.



218-237-3333
info@affinityrealestate.com



Affinity Real Estate - 600 Park Avenue South - Park Rapids MN 56470



website: www.AffinityRealEstate.com | email: info@affinityrealestate.com | office: 218-237-3333 | fax: 218-237-3377



\$349,900
 MLS 7027101 Residential
 12770 County 18
 Brainerd MN 56401



website: www.AffinityRealEstate.com | email: info@affinityrealestate.com | office: 218-237-3333 | fax: 218-237-3377

Affinity
REAL ESTATE INC

\$349,900
MLS 7027101 Residential
12770 County 18
Brainerd MN 56401



website: www.AffinityRealEstate.com | email: info@affinityrealestate.com | office: 218-237-3333 | fax:218-237-3377

Affinity
REAL ESTATE INC

\$349,900
MLS 7027101 Residential
12770 County 18
Brainerd MN 56401



website: www.AffinityRealEstate.com | email: info@affinityrealestate.com | office: 218-237-3333 | fax:218-237-3377



\$349,900
MLS 7027101 Residential
12770 County 18
Brainerd MN 56401