



MLS 7027355 Residential

**\$324,900**

2,088 sq ft  
4 bedrooms  
2 baths

1330 Lori Avenue  
Detroit Lakes MN 56501

Status: Active

**Description:**

Welcome to this one-of-a-kind Detroit Lakes home offering a unique layout and plenty of space to make your own. On the main floor you will find an updated kitchen w/granite countertops and modern cabinetry, an open living area filled with natural light from large south-facing windows, creating a warm and inviting space, 3 bedrooms and a full bathroom. Downstairs you'll find a spacious lower level family room, a fourth bedroom, a ¾ bathroom, laundry room and convenient access to the large 24x34 garage—providing plenty of storage and workspace. Step outside to enjoy the wrap-around deck and fully fenced backyard, ideal for relaxing, entertaining, or enjoying time outdoors. Located in a great Detroit Lakes neighborhood, this home offers convenient access to everything the area has to offer. Enjoy being just minutes from Detroit Lake, local parks, walking trails, schools, restaurants, and shopping.

**Additional Details:**

Year Built	1978
Lot Acres	0.22
Lot Dimensions	80x120
Garage Stalls	3
School District	1074
Taxes	\$2,988
Taxes with Assessments	\$2,988
Tax Year	2025

**Additional Features:**

**Basement:** Wood **Fuel:** Array **Garage:** 3 **Heat:** Baseboard, Ductless Mini-Split **Sewer:** City Sewer/Connected **Water:** City Water/Connected **Air Conditioning:** Ductless Mini-Split

**Driving Directions:**

N Shore to Lori Ave and property on left.



Listed By:  
HomeSmart Adventure Realty

Affinity Real Estate Inc. participates in the Regional Multiple Listing Service of Minnesota, Inc Broker Reciprocity (sm) program, allowing us to display other broker's listings on our website. All properties are subject to prior sale, change or withdrawal.



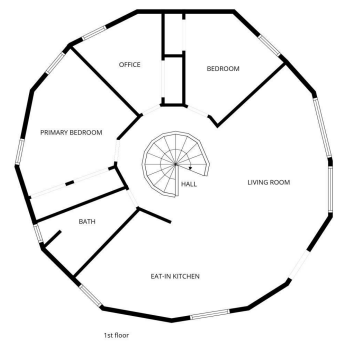
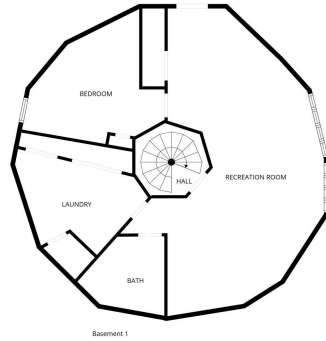
**Call Affinity Real Estate**

**218-237-3333**

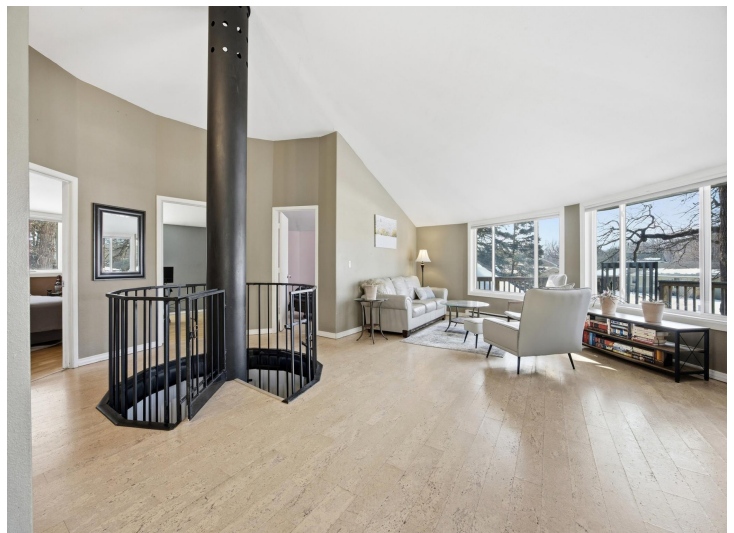
**info@affinityrealestate.com**



**Affinity Real Estate - 600 Park Avenue South - Park Rapids MN 56470**



FLOOR PLAN CREATED BY EUBICASA APP. MEASUREMENTS DEEMED HIGHLY RELIABLE BUT NOT GUARANTEED.



website: [www.AffinityRealEstate.com](http://www.AffinityRealEstate.com) | email: [info@affinityrealestate.com](mailto:info@affinityrealestate.com) | office: 218-237-3333 | fax: 218-237-3377



**\$324,900**  
 MLS 7027355 Residential  
 1330 Lori Avenue  
 Detroit Lakes MN 56501



website: [www.AffinityRealEstate.com](http://www.AffinityRealEstate.com) | email: [info@affinityrealestate.com](mailto:info@affinityrealestate.com) | office: 218-237-3333 | fax:218-237-3377

**Affinity**  
REAL ESTATE INC

**\$324,900**  
MLS 7027355 Residential  
1330 Lori Avenue  
Detroit Lakes MN 56501



website: [www.AffinityRealEstate.com](http://www.AffinityRealEstate.com) | email: [info@affinityrealestate.com](mailto:info@affinityrealestate.com) | office: 218-237-3333 | fax: 218-237-3377

**Affinity**  
REAL ESTATE INC

**\$324,900**  
MLS 7027355 Residential  
1330 Lori Avenue  
Detroit Lakes MN 56501



website: [www.AffinityRealEstate.com](http://www.AffinityRealEstate.com) | email: [info@affinityrealestate.com](mailto:info@affinityrealestate.com) | office: 218-237-3333 | fax: 218-237-3377

**Affinity**  
REAL ESTATE INC

**\$324,900**  
MLS 7027355 Residential  
1330 Lori Avenue  
Detroit Lakes MN 56501



website: [www.AffinityRealEstate.com](http://www.AffinityRealEstate.com) | email: [info@affinityrealestate.com](mailto:info@affinityrealestate.com) | office: 218-237-3333 | fax: 218-237-3377

**Affinity**  
REAL ESTATE INC

**\$324,900**  
MLS 7027355 Residential  
1330 Lori Avenue  
Detroit Lakes MN 56501



website: [www.AffinityRealEstate.com](http://www.AffinityRealEstate.com) | email: [info@affinityrealestate.com](mailto:info@affinityrealestate.com) | office: 218-237-3333 | fax:218-237-3377



**\$324,900**  
MLS 7027355 Residential  
1330 Lori Avenue  
Detroit Lakes MN 56501