



MLS 7027521 Land

\$70,000

5 Acres
Raw Land

TBD County 14
Park Rapids MN 56470

Status: Active

Description:

Located just outside Park Rapids, this 5-acre parcel offers privacy, pavement, and practical building potential all in one. The property is fully wooded with a mix of level and gently sloping terrain, giving you flexibility for a walkout design, slab-on-grade home, or a shouse with room to expand. County 14 provides blacktop access, and both electricity and fiber optic internet are available along the road. The setting feels quiet and rural, yet you're only minutes from town. If you've been waiting for acreage close to Park Rapids that's build-ready without sacrificing that Northwoods feel, this one checks the boxes.

Additional Details:

Lot Acres	5
Lot Dimensions	660x330x660x330
School District	1384
Taxes	\$200
Taxes with Assessments	\$200
Tax Year	2025

Additional Features:

Driving Directions:

From Park Rapids: Go south on Hwy 71 approximately 4 miles to a right on County 14. Proceed to property just past Black Bear Drive on your left.



Listed By:
Keller Williams Realty Professionals

Affinity Real Estate Inc. participates in the Regional Multiple Listing Service of Minnesota, Inc Broker Reciprocity (sm) program, allowing us to display other broker's listings on our website. All properties are subject to prior sale, change or withdrawal.



Call Affinity Real Estate

218-237-3333

info@affinityrealestate.com



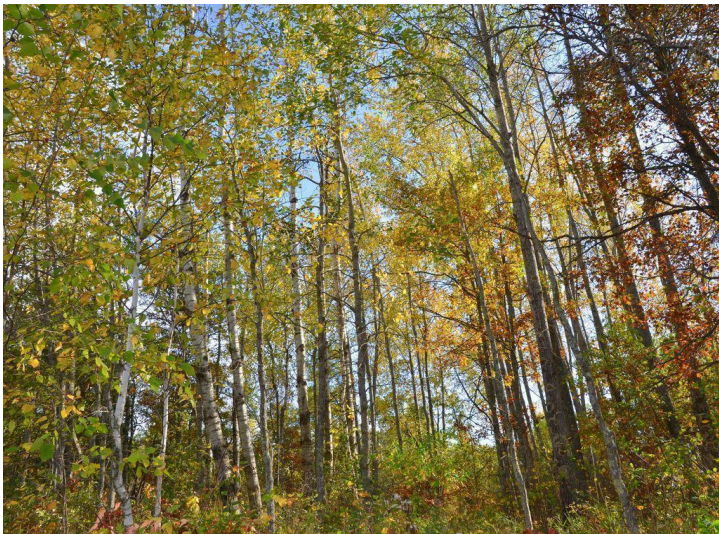
Affinity Real Estate - 600 Park Avenue South - Park Rapids MN 56470



website: www.AffinityRealEstate.com | email: info@affinityrealestate.com | office: 218-237-3333 | fax:218-237-3377



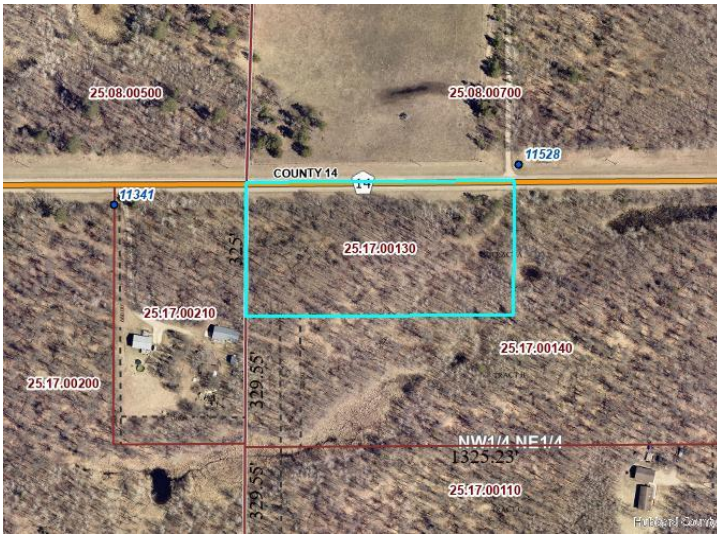
\$70,000
MLS 7027521 Land
TBD County 14
Park Rapids MN 56470



website: www.AffinityRealEstate.com | email: info@affinityrealestate.com | office: 218-237-3333 | fax:218-237-3377



\$70,000
MLS 7027521 Land
TBD County 14
Park Rapids MN 56470



website: www.AffinityRealEstate.com | email: info@affinityrealestate.com | office: 218-237-3333 | fax: 218-237-3377



\$70,000
MLS 7027521 Land
TBD County 14
Park Rapids MN 56470