



MLS 7028251 Lake Land

\$50,000

Description:

RARE PELICAN LAKES AREA STORAGE CONDO OPPORTUNITY!

Storage opportunities like this are extremely hard to find in the Pelican Lake area.

These professionally structured condo pad sites offer secure, uniform shop space with long-term resale value.

If you struggle to find storage for all of your lake toys, patio furniture, and overflow seasonal items, your future storage building site is conveniently located on the SE side of Pelican Lake.

Property Details

Pad Size: 34' x 66' (LAND ONLY for \$50,000)

Approved Shed Size: 32' x 60'

Similar color, design, and builder restrictions apply

CIC (Common Interest Community)

HOA – \$126/Month

Covers: Lawn mowing, Snow removal, and Weed trimming around the sheds.

Electric to pump house for shared well

Shared well option available (separate costs apply).

Utilities & Responsibilities

MN Natural Gas has service to the area, allowing owners the opportunity to heat and finish their shop.

Owners are responsible for their own gas, well connections, electric meter, and electric service.

Several units have installed holding tanks.

Located on the corner of Fish Lake Road and City. Hwy. #31

A rare chance to secure quality storage/shop space in a highly desirable lakes area location.

HURRY, ONLY 5 REMAINING!

Additional Details:

Lot Acres 0.05

Lot Dimensions 34 x 66

School District 22

Taxes \$194

Taxes with Assessments \$194

Listed By: 2025
Counselor Realty Detroit Lakes

Additional Features:
Affinity Real Estate Inc. participates in the Regional Multiple Listing Service of Minnesota, Inc Broker Reciprocity (sm) program, allowing us to display other broker's listings on our website. All properties are subject to prior sale, change or withdrawal.

Driving Directions:

From Hwy 59 Go West on Cty Rd 20 to County Rd 31 South, just past the Pelican Lake East Boat access. Storage shed pads are on the east side.



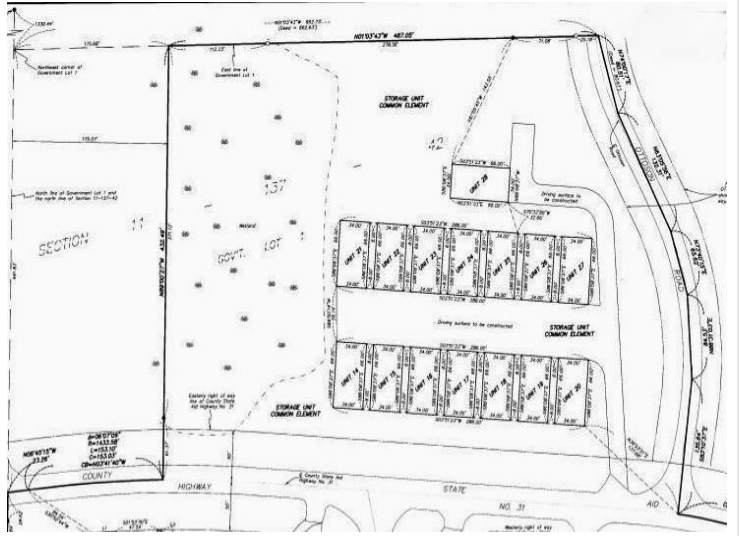
Call Affinity Real Estate

218-237-3333

info@affinityrealestate.com



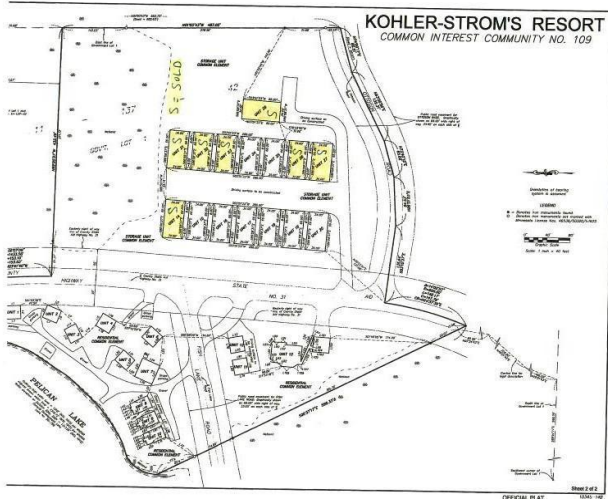
Affinity Real Estate - 600 Park Avenue South - Park Rapids MN 56470



website: www.AffinityRealEstate.com | email: info@affinityrealestate.com | office: 218-237-3333 | fax: 218-237-3377



\$50,000
 MLS 7028251 Lake Land
 51021 #24 Fish Lake Rd
 Detroit Lakes MN 56501



website: www.AffinityRealEstate.com | email: info@affinityrealestate.com | office: 218-237-3333 | fax:218-237-3377



\$50,000

MLS 7028251 Lake Land
51021 #24 Fish Lake Rd
Detroit Lakes MN 56501