

MLS 7028266 Land

**\$17,500**

0.11 Acres  
Plat Designed

Lot 8 Irvine Avenue  
Bemidji MN 56601

Status: Active

**Description:**

Looking to build your new home in Bemidji. The Villas at Natures Edge Gives you a view of nature out your back windows or patio while being conveniently located near all that Bemidji has to offer.

**Additional Details:**

Lot Acres	0.11
Lot Dimensions	71.45,63.4,57.83,93.68
School District	31
Taxes	\$364
Taxes with Assessments	\$364
Tax Year	2025

**Additional Features:**

**Driving Directions:**

From Bemidji, North on Irvine Avenue 1.3 miles to Rt into Villas At Natures Edge to Lot #8



Listed By:  
Timber Ghost Realty, LLC

Affinity Real Estate Inc. participates in the Regional Multiple Listing Service of Minnesota, Inc Broker Reciprocity (sm) program, allowing us to display other broker's listings on our website. All properties are subject to prior sale, change or withdrawal.



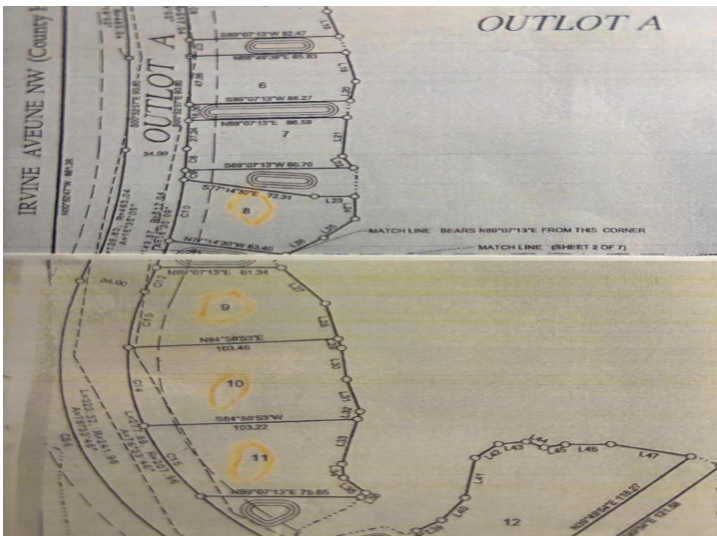
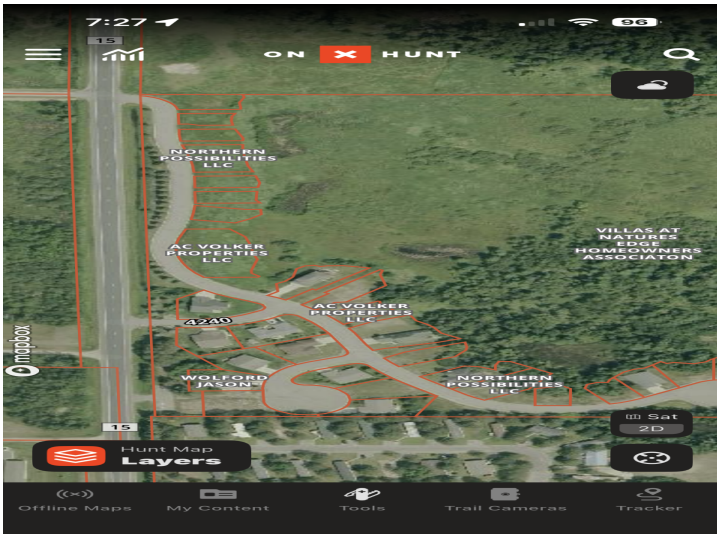
Call Affinity Real Estate

**218-237-3333**

[info@affinityrealestate.com](mailto:info@affinityrealestate.com)



Affinity Real Estate - 600 Park Avenue South - Park Rapids MN 56470



website: [www.AffinityRealEstate.com](http://www.AffinityRealEstate.com) | email: [info@affinityrealestate.com](mailto:info@affinityrealestate.com) | office: 218-237-3333 | fax:218-237-3377



**\$17,500**  
 MLS 7028266 Land  
 Lot 8 Irvine Avenue  
 Bemidji MN 56601