



MLS 7028488 Land

**\$84,900**

5.02 Acres  
Subdivided

Tract C County Road 12  
Ironton MN 56455

Status: Active

**Description:**

Approximately five wooded acres along the Deerwood Shortcut, offering a rural setting characterized by mature trees and natural surroundings. This new lot split provides an appealing balance of countryside living with convenient access to Brainerd and Baxter, as well as the dining, shopping, and amenities of downtown Crosby. Ideally situated near numerous lakes, trails, and year-round outdoor recreation. Taxes reflect the full parcel prior to the split.

**Additional Details:**

Lot Acres	5.02
Lot Dimensions	214x252x699x214x770x321
School District	904
Taxes	\$1,157
Taxes with Assessments	\$1,182
Tax Year	2025

**Additional Features:**

**Driving Directions:**

From the 4-way stop in Crosby head south on 3rd Ave NW/Hwy 6, turn left onto County Rd 28, head south then turn right onto CR-12 (Deerwood Shortcut), go 2.2 miles to 20118 CR-12. Tract C is to the left of the driveway to the house.



Listed By:  
Northland Sotheby's International Realty

Affinity Real Estate Inc. participates in the Regional Multiple Listing Service of Minnesota, Inc Broker Reciprocity (sm) program, allowing us to display other broker's listings on our website. All properties are subject to prior sale, change or withdrawal.



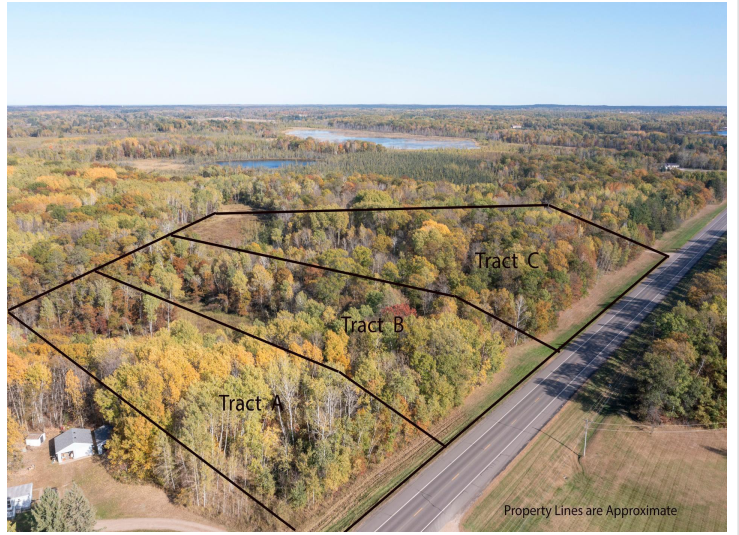
Call Affinity Real Estate

**218-237-3333**

[info@affinityrealestate.com](mailto:info@affinityrealestate.com)



Affinity Real Estate - 600 Park Avenue South - Park Rapids MN 56470



website: [www.AffinityRealEstate.com](http://www.AffinityRealEstate.com) | email: [info@affinityrealestate.com](mailto:info@affinityrealestate.com) | office: 218-237-3333 | fax:218-237-3377



**\$84,900**  
MLS 7028488 Land  
Tract C County Road 12  
Ironton MN 56455