



MLS 7028524 Residential

\$549,900

3,214 sq ft
4 bedrooms
3 baths

9414 Beverly Drive
Pequot Lakes MN 56472

Status: Pending

Description:

Welcome home to this 4+BR, 3 BA impeccable home resting on 2.57 wooded and extremely private acres offering big lake views of Lake Ossawinnamakee. The open main floor offers a chef's kitchen with hickory cabinetry, granite surfaces, center island plus a walk-in pantry. Generous sized lake view living room with gas fireplace for those crisp nights, main floor laundry, bedroom and a 1/2 bath. The upper level offers a private primary suite with walk-in shower, jetted tub, walk-in closet and dual sinks. You will also find two additional bedrooms, and a full bath. The finished walk-out lower level offers a spacious family room, office, storage, and an exercise room. The lower level is plumbed for a future bath, and in-floor heat is installed in the concrete awaiting a future boiler. The attached three car garage is partitioned if you elect for a workshop. One of the highlights to the home is the lakeside private deck overlooking Lake Ossawinnamakee. The location is extremely quiet on the end of the cul-de-sac with no road noise. If you are searching for a fantastic home with a prime location to the Brainerd Lakes Area where you can hear the loons calling out, then this is the one!

Additional Details:

Year Built	2005
Lot Acres	2.57
Lot Dimensions	61x441x374x229
Garage Stalls	3
School District	909
Taxes	\$3,368
Taxes with Assessments	\$3,368
Tax Year	2025

Additional Features:

Basement: Block, Daylight/Lookout Windows, Finished, Full, Storage Space, Walkout **Fuel:** Array **Garage:** 3 **Heat:** Forced Air, Fireplace(s)
Sewer: Tank with Drainage Field **Water:** Drilled, Well **Air Conditioning:** Central Air

Driving Directions:

From the Breezy Point gates go east on County Road 11, to left on East Street, to right on Beverly Drive to the end of the cul-de-sac



Listed By:
Edina Realty, Inc.

Affinity Real Estate Inc. participates in the Regional Multiple Listing Service of Minnesota, Inc Broker Reciprocity (sm) program, allowing us to display other broker's listings on our website. All properties are subject to prior sale, change or withdrawal.



Call Affinity Real Estate

218-237-3333

info@affinityrealestate.com



Affinity Real Estate - 600 Park Avenue South - Park Rapids MN 56470



website: www.AffinityRealEstate.com | email: info@affinityrealestate.com | office: 218-237-3333 | fax:218-237-3377



\$549,900
MLS 7028524 Residential
9414 Beverly Drive
Pequot Lakes MN 56472



website: www.AffinityRealEstate.com | email: info@affinityrealestate.com | office: 218-237-3333 | fax:218-237-3377

Affinity
REAL ESTATE INC

\$549,900
MLS 7028524 Residential
9414 Beverly Drive
Pequot Lakes MN 56472



website: www.AffinityRealEstate.com | email: info@affinityrealestate.com | office: 218-237-3333 | fax:218-237-3377



\$549,900
MLS 7028524 Residential
9414 Beverly Drive
Pequot Lakes MN 56472



website: www.AffinityRealEstate.com | email: info@affinityrealestate.com | office: 218-237-3333 | fax:218-237-3377



\$549,900
MLS 7028524 Residential
9414 Beverly Drive
Pequot Lakes MN 56472



website: www.AffinityRealEstate.com | email: info@affinityrealestate.com | office: 218-237-3333 | fax: 218-237-3377

Affinity
REAL ESTATE INC

\$549,900
MLS 7028524 Residential
9414 Beverly Drive
Pequot Lakes MN 56472



website: www.AffinityRealEstate.com | email: info@affinityrealestate.com | office: 218-237-3333 | fax:218-237-3377

Affinity
REAL ESTATE INC

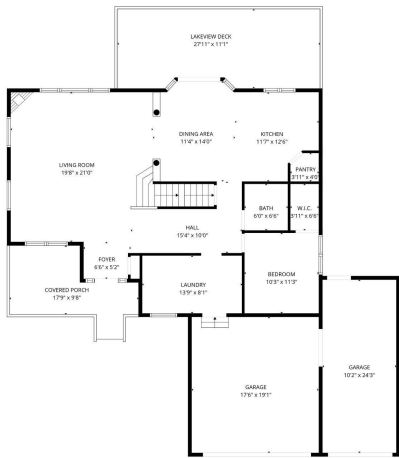
\$549,900
MLS 7028524 Residential
9414 Beverly Drive
Pequot Lakes MN 56472



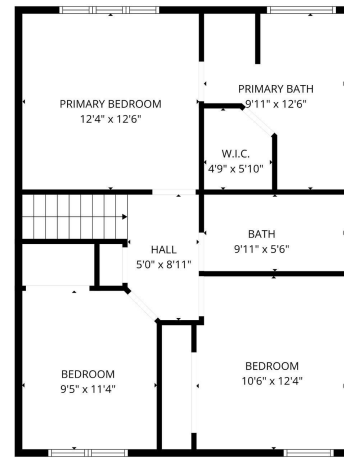
website: www.AffinityRealEstate.com | email: info@affinityrealestate.com | office: 218-237-3333 | fax:218-237-3377

Affinity
REAL ESTATE INC

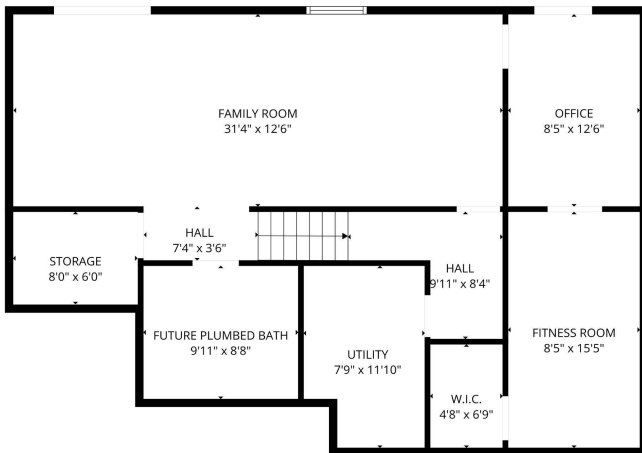
\$549,900
MLS 7028524 Residential
9414 Beverly Drive
Pequot Lakes MN 56472



FLOOR PLAN CREATED BY CUBICASA APP. MEASUREMENTS DEEMED HIGHLY RELIABLE BUT NOT GUARANTEED.



FLOOR PLAN CREATED BY CUBICASA APP. MEASUREMENTS DEEMED HIGHLY RELIABLE BUT NOT GUARANTEED.



FLOOR PLAN CREATED BY CUBICASA APP. MEASUREMENTS DEEMED HIGHLY RELIABLE BUT NOT GUARANTEED.



website: www.AffinityRealEstate.com | email: info@affinityrealestate.com | office: 218-237-3333 | fax: 218-237-3377



\$549,900
 MLS 7028524 Residential
 9414 Beverly Drive
 Pequot Lakes MN 56472

website: www.AffinityRealEstate.com | email: info@affinityrealestate.com | office: 218-237-3333 | fax:218-237-3377



\$549,900
MLS 7028524 Residential
9414 Beverly Drive
Pequot Lakes MN 56472