



MLS 7028554 Residential

\$569,000

3,213 sq ft
3 bedrooms
2 baths

24732 US Frontage
Staples MN 56479

Status: Active

Description:

Set on 62 acres, this property offers space, versatility, and everyday functionality. The main and upper levels offer 3 bedrooms, a full bath, kitchen with breakfast nook, dining room, and two flexible living or family room spaces.

The lower levels provide additional living space, including a second family room, half bath, laundry, two bonus rooms, and multiple storage areas. Bonus rooms offer flexibility for a home office, exercise, or craft space.

Outbuildings include a 36x75 agricultural building with a partially enclosed layout, featuring a horse stall, chicken coop, and Ritchie waterer on one end, with open space for equipment storage. A 30x54 pole barn, built in 2015, adds additional storage or workspace.

The land includes a mix of open ground and wooded areas, with hunting on the back portion. Located minutes from Staples and about 30 minutes from the Brainerd/Baxter area, it pairs a quiet rural setting with access to nearby amenities.

Additional Details:

Year Built	1974
Lot Acres	62.7
Lot Dimensions	Irregular
Garage Stalls	8
School District	1062
Taxes	\$3,190
Taxes with Assessments	\$3,244
Tax Year	2025

Additional Features:

Basement: Daylight/Lookout Windows, Finished, Storage Space **Fuel:** Array **Garage:** 8 **Heat:** Baseboard, Forced Air, Hot Water, In-Floor Heating, Radiant **Sewer:** Private Sewer, Tank with Drainage Field **Water:** Drilled, Private, Well **Air Conditioning:** Central Air

Driving Directions:

From Casev's in Staples head West on US-10, go 2.9 miles and turn right onto US-10.



Listed By:
Northland Sotheby's International Realty

Affinity Real Estate Inc. participates in the Regional Multiple Listing Service of Minnesota, Inc Broker Reciprocity (sm) program, allowing us to display other broker's listings on our website. All properties are subject to prior sale, change or withdrawal.



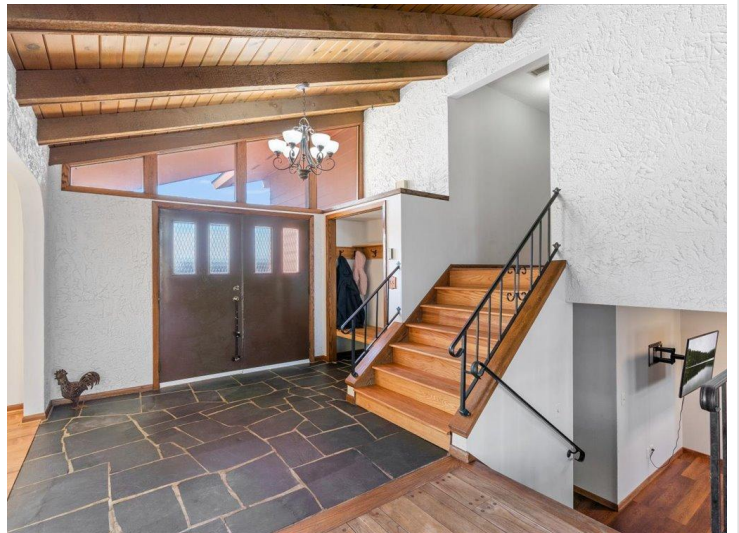
Call Affinity Real Estate

218-237-3333

info@affinityrealestate.com



Affinity Real Estate - 600 Park Avenue South - Park Rapids MN 56470



website: www.AffinityRealEstate.com | email: info@affinityrealestate.com | office: 218-237-3333 | fax: 218-237-3377

Affinity
REAL ESTATE INC

\$569,000
MLS 7028554 Residential
24732 US Frontage
Staples MN 56479



website: www.AffinityRealEstate.com | email: info@affinityrealestate.com | office: 218-237-3333 | fax: 218-237-3377

Affinity
REAL ESTATE INC

\$569,000
MLS 7028554 Residential
24732 US Frontage
Staples MN 56479



website: www.AffinityRealEstate.com | email: info@affinityrealestate.com | office: 218-237-3333 | fax: 218-237-3377

Affinity
REAL ESTATE INC

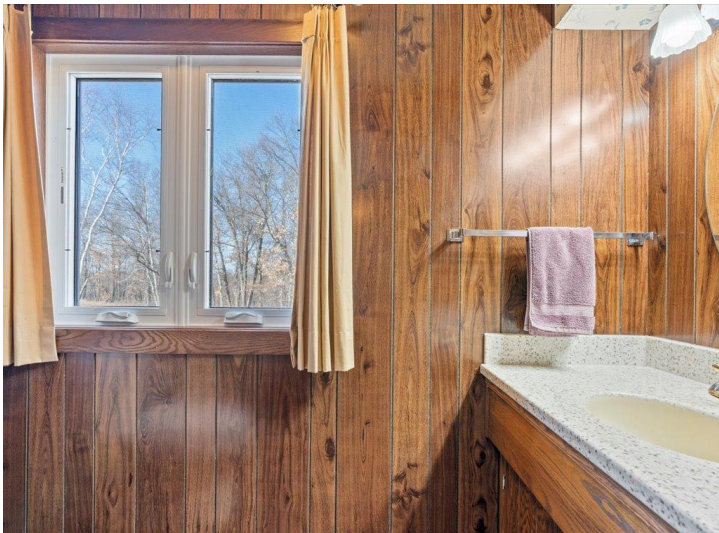
\$569,000
MLS 7028554 Residential
24732 US Frontage
Staples MN 56479



website: www.AffinityRealEstate.com | email: info@affinityrealestate.com | office: 218-237-3333 | fax:218-237-3377

Affinity
REAL ESTATE INC

\$569,000
MLS 7028554 Residential
24732 US Frontage
Staples MN 56479



website: www.AffinityRealEstate.com | email: info@affinityrealestate.com | office: 218-237-3333 | fax:218-237-3377



\$569,000
MLS 7028554 Residential
24732 US Frontage
Staples MN 56479



website: www.AffinityRealEstate.com | email: info@affinityrealestate.com | office: 218-237-3333 | fax:218-237-3377

Affinity
REAL ESTATE INC

\$569,000
MLS 7028554 Residential
24732 US Frontage
Staples MN 56479



website: www.AffinityRealEstate.com | email: info@affinityrealestate.com | office: 218-237-3333 | fax:218-237-3377



\$569,000
MLS 7028554 Residential
24732 US Frontage
Staples MN 56479



website: www.AffinityRealEstate.com | email: info@affinityrealestate.com | office: 218-237-3333 | fax:218-237-3377

Affinity
REAL ESTATE INC

\$569,000
MLS 7028554 Residential
24732 US Frontage
Staples MN 56479



website: www.AffinityRealEstate.com | email: info@affinityrealestate.com | office: 218-237-3333 | fax:218-237-3377

Affinity
REAL ESTATE INC

\$569,000
MLS 7028554 Residential
24732 US Frontage
Staples MN 56479



website: www.AffinityRealEstate.com | email: info@affinityrealestate.com | office: 218-237-3333 | fax:218-237-3377



\$569,000
MLS 7028554 Residential
24732 US Frontage
Staples MN 56479