



MLS 7028699 Land

**\$172,000**

1.28 Acres

Raw Land

LOT A State Hwy 18

Brainerd MN 56401

Status: Active

**Description:**

Tucked away on quiet, secluded Kenney Lake, this heavily wooded property offers the privacy and natural beauty so many buyers are searching for. Towering trees surround the land, creating a peaceful Northwoods setting with room to breathe and space to dream.

Whether you envision a year-round home with panoramic lake views or a cozy seasonal cabin retreat, this property provides multiple ideal building sites. The mature woods offer both shade and seclusion, while the lakefront invites fishing, kayaking, swimming, and quiet mornings watching the water come alive.

Opportunities like this are increasingly rare — a private setting, abundant wildlife, and the flexibility to build exactly what you want.

Bring your plans, your builder, and your vision. This is your chance to create something truly special on the lake.

**Additional Details:**

Lot Acres	1.28
Lot Dimensions	159x315x150x365
School District	896
Taxes	\$202
Taxes with Assessments	\$202
Tax Year	2026

**Additional Features:**

**Driving Directions:**

GPS Recommended; From Garrison, MN follow State Hwy 18 W for approximately 2.5 miles. See FOR SALE signs on your left directing to property. Drive down rustic driveway to ridge. Park at ridge and walk down the trail towards the lake another 300 ft to property markers



Listed By:  
Coldwell Banker Realty

Affinity Real Estate Inc. participates in the Regional Multiple Listing Service of Minnesota, Inc Broker Reciprocity (sm) program, allowing us to display other broker's listings on our website. All properties are subject to prior sale, change or withdrawal.



**Call Affinity Real Estate**

**218-237-3333**

**info@affinityrealestate.com**



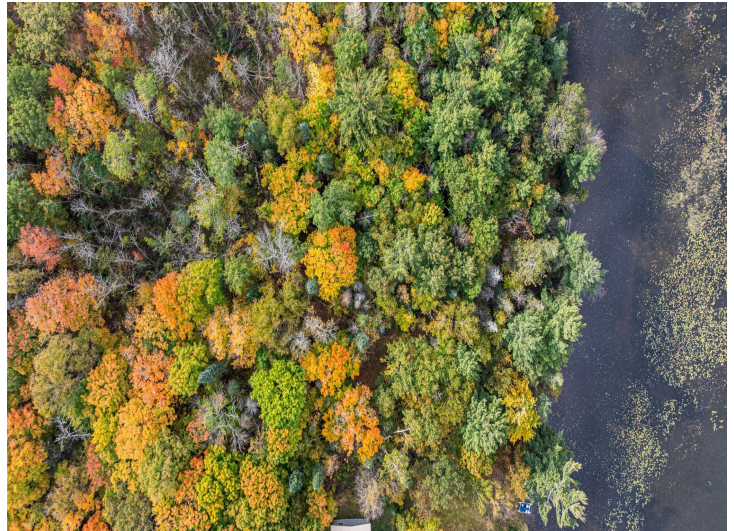
**Affinity Real Estate - 600 Park Avenue South - Park Rapids MN 56470**



website: [www.AffinityRealEstate.com](http://www.AffinityRealEstate.com) | email: [info@affinityrealestate.com](mailto:info@affinityrealestate.com) | office: 218-237-3333 | fax: 218-237-3377



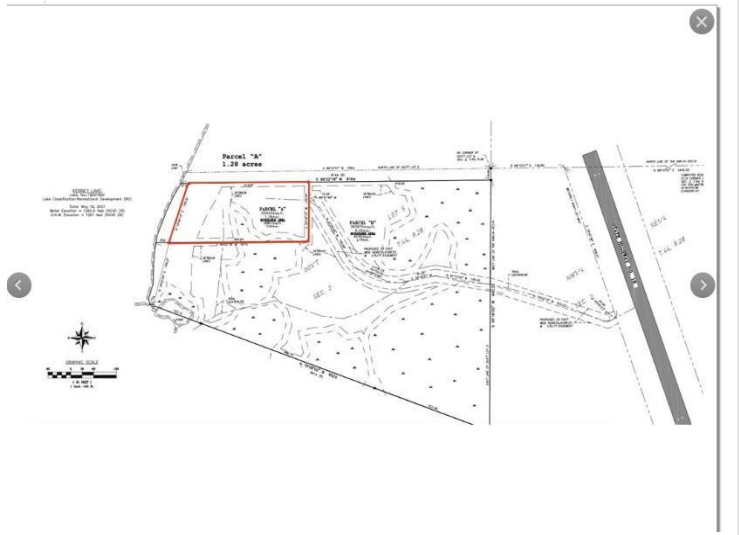
**\$172,000**  
MLS 7028699 Land  
LOT A State Hwy 18  
Brainerd MN 56401



website: [www.AffinityRealEstate.com](http://www.AffinityRealEstate.com) | email: [info@affinityrealestate.com](mailto:info@affinityrealestate.com) | office: 218-237-3333 | fax:218-237-3377



**\$172,000**  
MLS 7028699 Land  
LOT A State Hwy 18  
Brainerd MN 56401



website: [www.AffinityRealEstate.com](http://www.AffinityRealEstate.com) | email: [info@affinityrealestate.com](mailto:info@affinityrealestate.com) | office: 218-237-3333 | fax:218-237-3377



**\$172,000**  
MLS 7028699 Land  
LOT A State Hwy 18  
Brainerd MN 56401