



MLS 7028844 Land

\$21,950

0.705 Acres
Finished Lot(s)

TBD 11th Street
Menahga MN 56464

Status: Active

Description:

Less than one block off Hwy 71, in the Menahga Industrial Park, this 0.7 acre lot is about half wooded on the North and open land on the South. Corners are marked. An ideal spot for a commercial business building, storage building or any other commercial use.

Additional Details:

Lot Acres	0.705
Lot Dimensions	271.91x166.78x100x235.77
School District	2286
Taxes	\$82
Taxes with Assessments	\$82
Tax Year	2026

Additional Features:

Driving Directions:

From Park Rapids, go South on Hwy 71 to Menahga, continue through town and about 1/2 mile past town. See 11th Street, turn left and follow to property.



Listed By:
Keller Williams Realty Professionals

Affinity Real Estate Inc. participates in the Regional Multiple Listing Service of Minnesota, Inc Broker Reciprocity (sm) program, allowing us to display other broker's listings on our website. All properties are subject to prior sale, change or withdrawal.



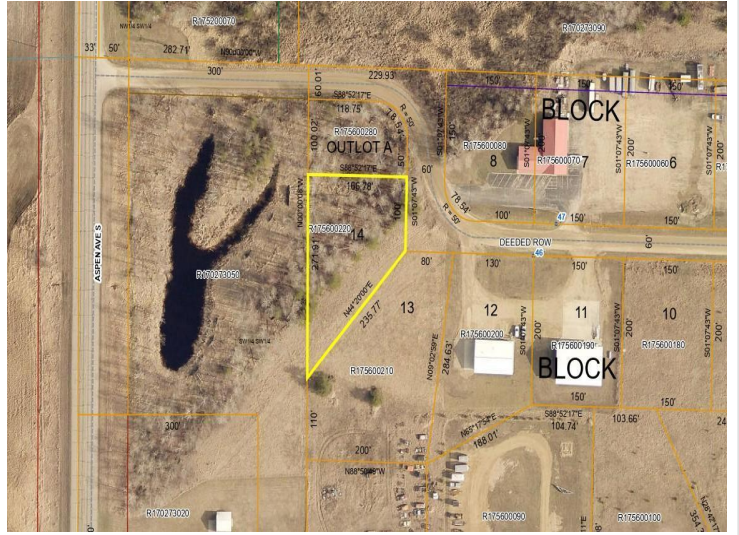
Call Affinity Real Estate

218-237-3333

info@affinityrealestate.com



Affinity Real Estate - 600 Park Avenue South - Park Rapids MN 56470



website: www.AffinityRealEstate.com | email: info@affinityrealestate.com | office: 218-237-3333 | fax:218-237-3377



\$21,950
MLS 7028844 Land
TBD 11th Street
Menahga MN 56464