



MLS 7028923 Residential

\$265,000

1,479 sq ft
3 bedrooms
2 baths

41990 County Road 308
Deer River MN 56636

Status: Canceled

Description:

Are you looking for peace and serenity? Then you do not want to miss this lovely home set on 2 acres! This well-maintained 3 bedroom home is located right across the road from Little Bowstring Lake, making it super convenient for all of your fishing and boating needs. This home has had many recent updates, including a newer roof, new water softener, gutters with leaf guards, a new stove, new flooring, and some new plumbing as well. The primary bedroom is currently set up as a rec room. There is also a nice-sized second bedroom on the main level and a larger third bedroom on the upper level. The upper level features adorable rooms that could be used for storage or a little "getaway reading nook". Also included in this sale is a large pole building and an extra garage with tons of storage available for all of your outdoor toys!

Additional Details:

Year Built	1960
Lot Acres	2.1
Lot Dimensions	325x2723x325x273
Garage Stalls	3
School District	1407
Taxes	(unreported)
Taxes with Assessments	\$81
Tax Year	2025

Additional Features:

Basement: Block, Unfinished, Walkout **Fuel:** Array **Garage:** 3 **Heat:** Forced Air, Fireplace(s), Wood Stove **Sewer:** Private Sewer **Water:** Private **Air Conditioning:** Window Unit(s)

Driving Directions:

Hwy 38 for 22 miles, L onto CO RD 48 for 4.9 miles L on CO Rd 308 to property on L



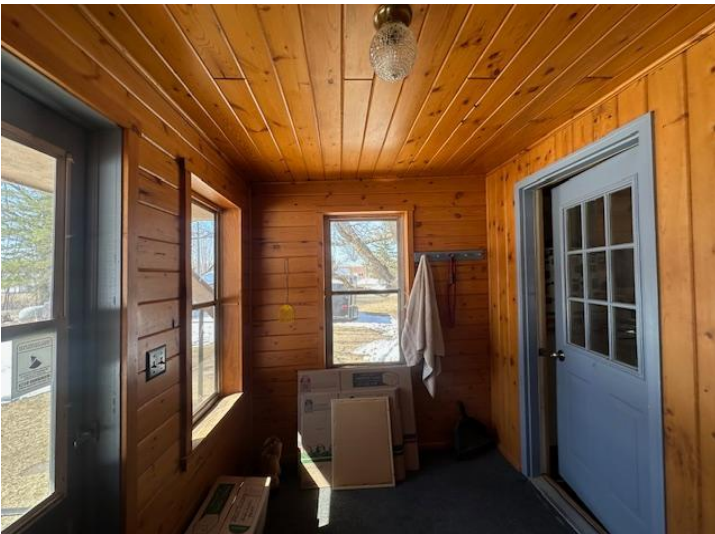
Listed By:
MOVE IT REAL ESTATE
GROUP/LAKEHOMES.COM
Affinity Real Estate Inc. participates in the Regional Multiple Listing Service of Minnesota, Inc Broker Reciprocity (sm) program, allowing us to display other broker's listings on our website. All properties are subject to prior sale, change or withdrawal.



Call Affinity Real Estate
218-237-3333
info@affinityrealestate.com



Affinity Real Estate - 600 Park Avenue South - Park Rapids MN 56470



website: www.AffinityRealEstate.com | email: info@affinityrealestate.com | office: 218-237-3333 | fax: 218-237-3377

Affinity
REAL ESTATE INC

\$265,000
MLS 7028923 Residential
41990 County Road 308
Deer River MN 56636



website: www.AffinityRealEstate.com | email: info@affinityrealestate.com | office: 218-237-3333 | fax: 218-237-3377

Affinity
REAL ESTATE INC

\$265,000
MLS 7028923 Residential
41990 County Road 308
Deer River MN 56636



website: www.AffinityRealEstate.com | email: info@affinityrealestate.com | office: 218-237-3333 | fax:218-237-3377

Affinity
REAL ESTATE INC

\$265,000
MLS 7028923 Residential
41990 County Road 308
Deer River MN 56636



website: www.AffinityRealEstate.com | email: info@affinityrealestate.com | office: 218-237-3333 | fax:218-237-3377

Affinity
REAL ESTATE INC

\$265,000
MLS 7028923 Residential
41990 County Road 308
Deer River MN 56636



website: www.AffinityRealEstate.com | email: info@affinityrealestate.com | office: 218-237-3333 | fax:218-237-3377

Affinity
REAL ESTATE INC

\$265,000
MLS 7028923 Residential
41990 County Road 308
Deer River MN 56636



website: www.AffinityRealEstate.com | email: info@affinityrealestate.com | office: 218-237-3333 | fax: 218-237-3377

Affinity
REAL ESTATE INC

\$265,000
MLS 7028923 Residential
41990 County Road 308
Deer River MN 56636



website: www.AffinityRealEstate.com | email: info@affinityrealestate.com | office: 218-237-3333 | fax:218-237-3377



\$265,000
MLS 7028923 Residential
41990 County Road 308
Deer River MN 56636



website: www.AffinityRealEstate.com | email: info@affinityrealestate.com | office: 218-237-3333 | fax:218-237-3377

Affinity
REAL ESTATE INC

\$265,000
MLS 7028923 Residential
41990 County Road 308
Deer River MN 56636



website: www.AffinityRealEstate.com | email: info@affinityrealestate.com | office: 218-237-3333 | fax:218-237-3377



\$265,000
MLS 7028923 Residential
41990 County Road 308
Deer River MN 56636



website: www.AffinityRealEstate.com | email: info@affinityrealestate.com | office: 218-237-3333 | fax:218-237-3377



\$265,000
MLS 7028923 Residential
41990 County Road 308
Deer River MN 56636