



MLS 7028961 Land

\$429,900

79.26 Acres
Raw Land

27417 County 89
Long Prairie MN 56347

Status: Active

Description:

79.26 Acres of Opportunity in Long Prairie, Minnesota

Here is your chance to own a truly versatile farm and hunting property just outside Long Prairie. This 79.26-acre parcel offers a rare combination of productive organic farmland, quality habitat, and functional outbuildings ready for your vision.

The property features two large barns, including a main barn with built-in living quarters offering 3 bedrooms and heated by a cozy wood-burning stove—perfect for off-grid living or a hunting basecamp. There is currently no electric service. The property has septic holding tanks in place. The existing well is nonconforming and will be professionally capped prior to closing.


The land has been 100% organic, providing fertile, tillable ground ideal for crops, food plots, or continued farming. Tree-lined borders and pockets of low ground create excellent habitat for whitetail deer, turkey, upland birds, and small game. The layout naturally funnels wildlife while maintaining strong agricultural potential.

Fencing is currently in place but can be removed at the buyer’s request. If any outbuildings are not desired, the seller and local community are willing to carefully dismantle and repurpose them rather than bulldoze—preserving materials and honoring the property’s character.

Excellent hunting, productive soil, and supportive rural neighbors make this a standout investment whether you’re looking to farm, hunt, homestead, or hold for the future. All located in beautiful Todd County in north central Minnesota !!

Additional Details:

Year Built	2014
Lot Acres	79.26
Lot Dimensions	1657x2647x995x2651
School District	1240
Taxes	\$1,618
Taxes with Assessments	\$1,618

 Listed By: 2025
Timber Ghost Realty, LLC

Additional Features:
Affinity Real Estate Inc. participates in the Regional Multiple Listing Service of Minnesota, Inc Broker Reciprocity (sm) program, allowing us to display other broker’s listings on our website. All properties are subject to prior sale, change or withdrawal.

Driving Directions:
From Hwy 10 - take exit 27 towards Little Falls/Pierz. take 27 to US-71N - Lake Street N, Turn Left onto City Rd 88, go 2.5 miles, Turn Left onto County road 89 - Property will be on your right.



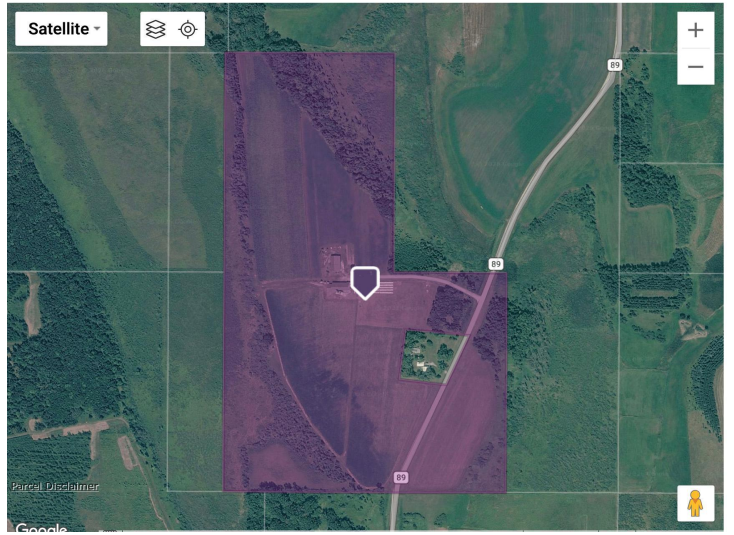
Call Affinity Real Estate

218-237-3333

info@affinityrealestate.com



Affinity Real Estate, 600 Park Avenue South, Park Rapids MN 56470



website: www.AffinityRealEstate.com | email: info@affinityrealestate.com | office: 218-237-3333 | fax:218-237-3377



\$429,900
MLS 7028961 Land
27417 County 89
Long Prairie MN 56347



website: www.AffinityRealEstate.com | email: info@affinityrealestate.com | office: 218-237-3333 | fax:218-237-3377



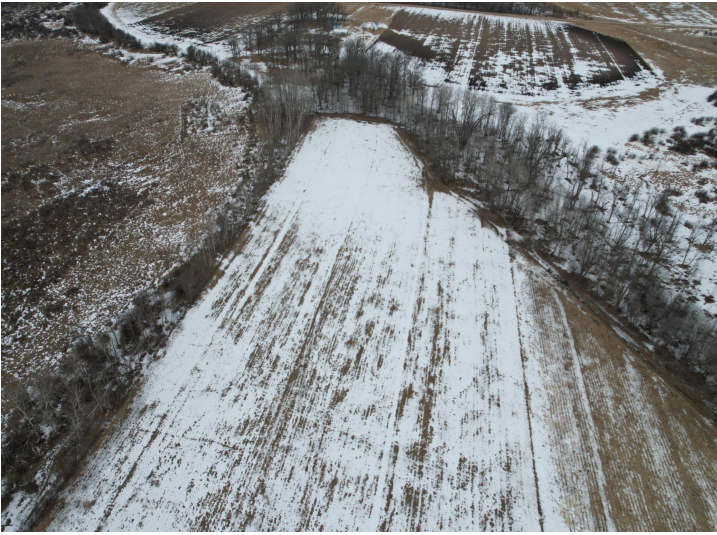
\$429,900
MLS 7028961 Land
27417 County 89
Long Prairie MN 56347



website: www.AffinityRealEstate.com | email: info@affinityrealestate.com | office: 218-237-3333 | fax: 218-237-3377

Affinity
REAL ESTATE INC

\$429,900
MLS 7028961 Land
27417 County 89
Long Prairie MN 56347



website: www.AffinityRealEstate.com | email: info@affinityrealestate.com | office: 218-237-3333 | fax:218-237-3377



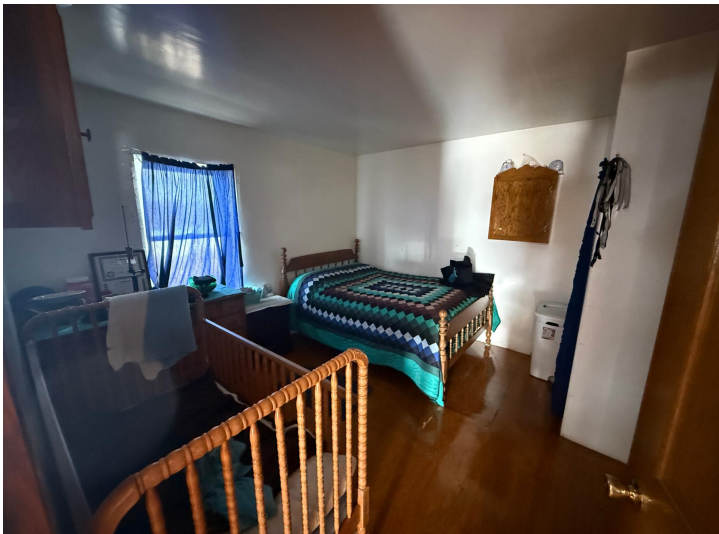
\$429,900
MLS 7028961 Land
27417 County 89
Long Prairie MN 56347



website: www.AffinityRealEstate.com | email: info@affinityrealestate.com | office: 218-237-3333 | fax:218-237-3377



\$429,900
MLS 7028961 Land
27417 County 89
Long Prairie MN 56347



website: www.AffinityRealEstate.com | email: info@affinityrealestate.com | office: 218-237-3333 | fax:218-237-3377

Affinity
REAL ESTATE INC

\$429,900
MLS 7028961 Land
27417 County 89
Long Prairie MN 56347



website: www.AffinityRealEstate.com | email: info@affinityrealestate.com | office: 218-237-3333 | fax:218-237-3377

Affinity
REAL ESTATE INC

\$429,900
MLS 7028961 Land
27417 County 89
Long Prairie MN 56347



website: www.AffinityRealEstate.com | email: info@affinityrealestate.com | office: 218-237-3333 | fax:218-237-3377



\$429,900
MLS 7028961 Land
27417 County 89
Long Prairie MN 56347



website: www.AffinityRealEstate.com | email: info@affinityrealestate.com | office: 218-237-3333 | fax:218-237-3377



\$429,900
MLS 7028961 Land
27417 County 89
Long Prairie MN 56347



website: www.AffinityRealEstate.com | email: info@affinityrealestate.com | office: 218-237-3333 | fax:218-237-3377



\$429,900
MLS 7028961 Land
27417 County 89
Long Prairie MN 56347



website: www.AffinityRealEstate.com | email: info@affinityrealestate.com | office: 218-237-3333 | fax:218-237-3377



\$429,900
MLS 7028961 Land
27417 County 89
Long Prairie MN 56347



website: www.AffinityRealEstate.com | email: info@affinityrealestate.com | office: 218-237-3333 | fax:218-237-3377

Affinity
REAL ESTATE INC

\$429,900
MLS 7028961 Land
27417 County 89
Long Prairie MN 56347



website: www.AffinityRealEstate.com | email: info@affinityrealestate.com | office: 218-237-3333 | fax:218-237-3377



\$429,900
MLS 7028961 Land
27417 County 89
Long Prairie MN 56347