



MLS 7029811 Land

**\$79,000**

5 Acres  
Raw Land

59527 235th Street  
Hewitt MN 56453

Status: Active

**Description:**

Discover the perfect setting for your future home on this beautiful 5-acre parcel in a peaceful rural location. Enjoy the quiet country setting while still being conveniently close to area communities—just 9 miles to Hewitt, 11 miles to Henning, and 14 miles to Wadena. You'll appreciate the balance of privacy and accessibility this location offers.

For outdoor enthusiasts, this property truly stands out. Within eight miles you'll find four Wildlife Management Areas, two Waterfowl Production Areas, and three tracts of state land totaling approximately 5,000 acres. These nearby public lands provide outstanding opportunities for hunting, wildlife viewing, and year-round recreation.

Small-acreage parcels in locations like this are hard to come by—close to amenities, yet surrounded by thousands of acres of public land. Don't miss your chance to own this rare and versatile piece of Minnesota countryside! \*More land potentially available\* Survey and Legal Description to be completed with acceptable offer. Taxes TBD.

**Additional Details:**

Year Built	1974
Lot Acres	5
Lot Dimensions	TBD
School District	2155
Taxes	(unreported)
Taxes with Assessments	(unreported)
Tax Year	2025

**Additional Features:**

**Driving Directions:**

West on hwy 210 from Hewitt. 8 Miles to hwy 73. Take a left on 73 and the property is on the corner of 235th st and hwy 73



Listed By:  
Hinkle Realty

Affinity Real Estate Inc. participates in the Regional Multiple Listing Service of Minnesota, Inc Broker Reciprocity (sm) program, allowing us to display other broker's listings on our website. All properties are subject to prior sale, change or withdrawal.



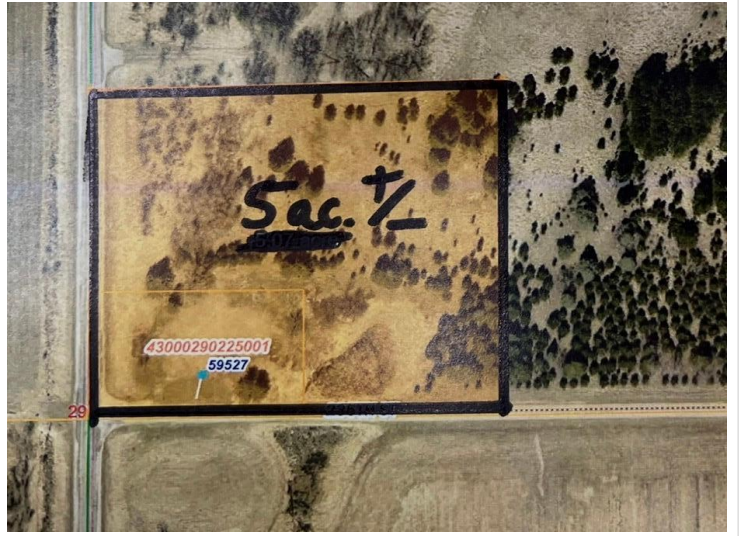
Call Affinity Real Estate

**218-237-3333**

[info@affinityrealestate.com](mailto:info@affinityrealestate.com)



Affinity Real Estate - 600 Park Avenue South - Park Rapids MN 56470



website: [www.AffinityRealEstate.com](http://www.AffinityRealEstate.com) | email: [info@affinityrealestate.com](mailto:info@affinityrealestate.com) | office: 218-237-3333 | fax:218-237-3377



**\$79,000**  
MLS 7029811 Land  
59527 235th Street  
Hewitt MN 56453