



MLS 7029931 Residential

\$339,900

1,680 sq ft
3 bedrooms
2 baths

4880 32nd Street
Pine River MN 56474

Status: Coming Soon

Description:

Set on 5 picturesque acres surrounded by woods and farmland, this property offers the kind of privacy and peaceful setting that makes it easy to slow down and enjoy home. The spacious kitchen, complete with a walk-in pantry, provides plenty of room to gather, cook, and entertain, while newer mechanical updates and thoughtful interior touches add comfort and convenience. The primary suite offers a comfortable retreat, and outdoor living shines with a fenced front area and a nicely sized back deck perfect for relaxing, grilling, or taking in the views of the surrounding landscape.

Additional Details:

Year Built	2006
Lot Acres	5.05
Lot Dimensions	660x330
Garage Stalls	2
School District	1065
Taxes	\$782
Taxes with Assessments	\$848
Tax Year	2025

Additional Features:

Basement: Crawl Space **Fuel:** Array **Garage:** 2 **Heat:** Forced Air **Sewer:** Mound Septic, Private Sewer **Water:** Drilled **Air Conditioning:** Central Air

Driving Directions:

North on 371 to County Rd 2 (24th St SW) in Pine River, left turn. Left turn on 48th St SW, right at 32nd St SW, shared driveway on right.



Listed By:
LPT Realty, LLC.

Affinity Real Estate Inc. participates in the Regional Multiple Listing Service of Minnesota, Inc Broker Reciprocity (sm) program, allowing us to display other broker's listings on our website. All properties are subject to prior sale, change or withdrawal.



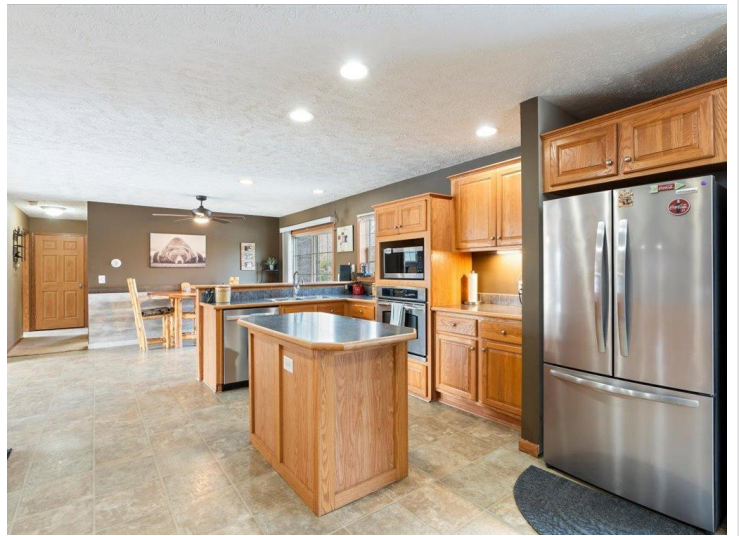
Call Affinity Real Estate

218-237-3333

info@affinityrealestate.com



Affinity Real Estate - 600 Park Avenue South - Park Rapids MN 56470



website: www.AffinityRealEstate.com | email: info@affinityrealestate.com | office: 218-237-3333 | fax:218-237-3377



\$339,900
MLS 7029931 Residential
4880 32nd Street
Pine River MN 56474



website: www.AffinityRealEstate.com | email: info@affinityrealestate.com | office: 218-237-3333 | fax: 218-237-3377

Affinity
REAL ESTATE INC

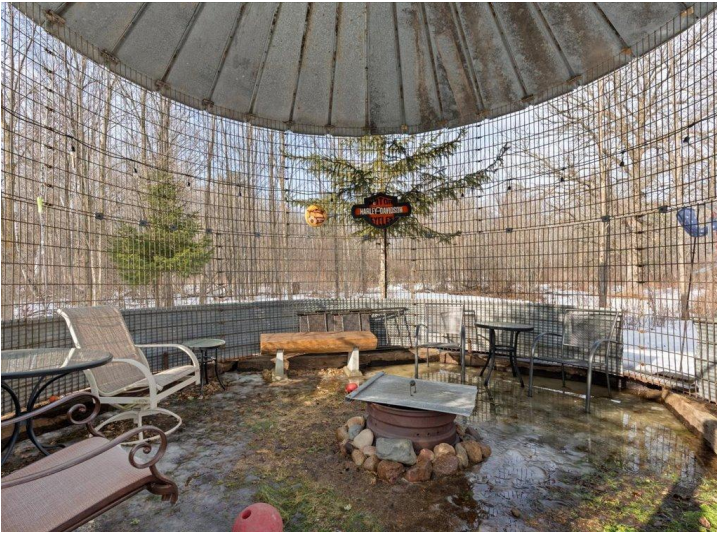
\$339,900
MLS 7029931 Residential
4880 32nd Street
Pine River MN 56474



website: www.AffinityRealEstate.com | email: info@affinityrealestate.com | office: 218-237-3333 | fax: 218-237-3377

Affinity
REAL ESTATE INC

\$339,900
MLS 7029931 Residential
4880 32nd Street
Pine River MN 56474



website: www.AffinityRealEstate.com | email: info@affinityrealestate.com | office: 218-237-3333 | fax:218-237-3377

Affinity
REAL ESTATE INC

\$339,900
MLS 7029931 Residential
4880 32nd Street
Pine River MN 56474



website: www.AffinityRealEstate.com | email: info@affinityrealestate.com | office: 218-237-3333 | fax:218-237-3377



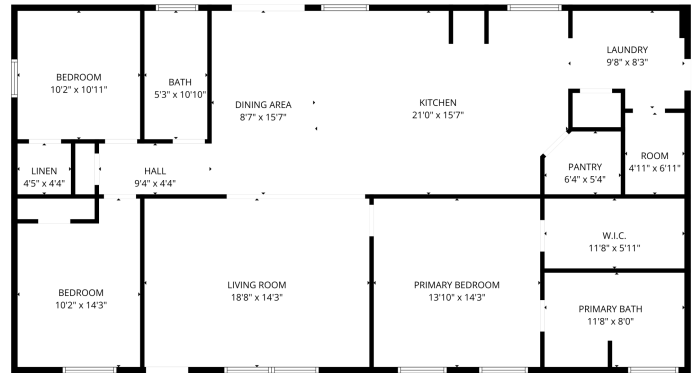
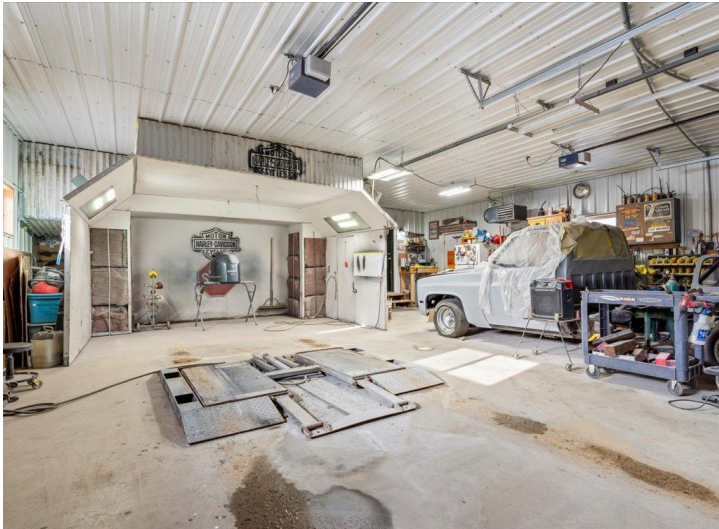
\$339,900
MLS 7029931 Residential
4880 32nd Street
Pine River MN 56474



website: www.AffinityRealEstate.com | email: info@affinityrealestate.com | office: 218-237-3333 | fax:218-237-3377

Affinity
REAL ESTATE INC

\$339,900
MLS 7029931 Residential
4880 32nd Street
Pine River MN 56474



FLOOR PLAN CREATED BY CUBICASA APP. MEASUREMENTS DEEMED HIGHLY RELIABLE BUT NOT GUARANTEED.

website: www.AffinityRealEstate.com | email: info@affinityrealestate.com | office: 218-237-3333 | fax: 218-237-3377



\$339,900
 MLS 7029931 Residential
 4880 32nd Street
 Pine River MN 56474



website: www.AffinityRealEstate.com | email: info@affinityrealestate.com | office: 218-237-3333 | fax:218-237-3377



\$339,900
MLS 7029931 Residential
4880 32nd Street
Pine River MN 56474