



MLS 7029932 Residential

\$329,900

1,692 sq ft
2 bedrooms
3 baths

7384 Schley Road
Brainerd MN 56401

Status: Pending



Description:

This 2021 constructed home features 2 bedrooms, 2½ bathrooms, and a finished basement on nearly 8 acres, offering elevated country living. Enjoy time spent around the gas fireplace, stainless steel appliances, stacked stone, tongue and groove accents, bamboo flooring, and stone countertops. The home also includes a large ensuite primary bathroom with a shower and a large soaking tub. Outside, the acreage is comprised mostly of high ground, ideal for building your dream shop and cutting some trails. The deck and covered porch will be ready for you to sip your coffee, enjoy the wildlife, and watch the sunrise, just in time to call this home yours.

Additional Details:

Year Built	2021
Lot Acres	7.89
Lot Dimensions	472.44x1,323.81x99.03x200.06x315.89x8 82.17
School District	896
Taxes	\$1,632
Taxes with Assessments	\$1,632
Tax Year	2025

Additional Features:

Basement: Full, Wood **Fuel:** Array **Heat:** Forced Air **Sewer:** Private Sewer **Water:** Well **Air Conditioning:** None

Driving Directions:

From Garrison 169 South, Right on 26, Left on Schley Road



Listed By:
eXp Realty

Affinity Real Estate Inc. participates in the Regional Multiple Listing Service of Minnesota, Inc Broker Reciprocity (sm) program, allowing us to display other broker's listings on our website. All properties are subject to prior sale, change or withdrawal.



Call Affinity Real Estate

218-237-3333

info@affinityrealestate.com



Affinity Real Estate - 600 Park Avenue South - Park Rapids MN 56470



website: www.AffinityRealEstate.com | email: info@affinityrealestate.com | office: 218-237-3333 | fax:218-237-3377



\$329,900
MLS 7029932 Residential
7384 Schley Road
Brainerd MN 56401



website: www.AffinityRealEstate.com | email: info@affinityrealestate.com | office: 218-237-3333 | fax:218-237-3377

Affinity
REAL ESTATE INC

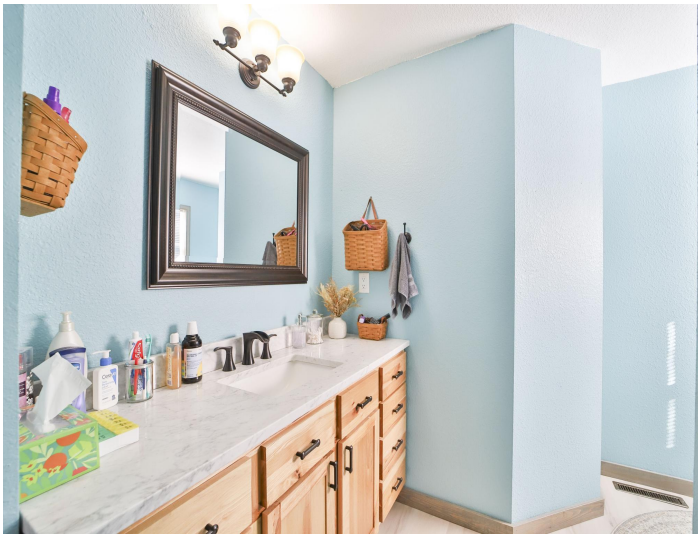
\$329,900
MLS 7029932 Residential
7384 Schley Road
Brainerd MN 56401



website: www.AffinityRealEstate.com | email: info@affinityrealestate.com | office: 218-237-3333 | fax: 218-237-3377

Affinity
REAL ESTATE INC

\$329,900
MLS 7029932 Residential
7384 Schley Road
Brainerd MN 56401



website: www.AffinityRealEstate.com | email: info@affinityrealestate.com | office: 218-237-3333 | fax:218-237-3377



\$329,900
MLS 7029932 Residential
7384 Schley Road
Brainerd MN 56401



website: www.AffinityRealEstate.com | email: info@affinityrealestate.com | office: 218-237-3333 | fax:218-237-3377



\$329,900
MLS 7029932 Residential
7384 Schley Road
Brainerd MN 56401



website: www.AffinityRealEstate.com | email: info@affinityrealestate.com | office: 218-237-3333 | fax:218-237-3377

Affinity
REAL ESTATE INC

\$329,900
MLS 7029932 Residential
7384 Schley Road
Brainerd MN 56401



website: www.AffinityRealEstate.com | email: info@affinityrealestate.com | office: 218-237-3333 | fax: 218-237-3377

Affinity
REAL ESTATE INC

\$329,900
MLS 7029932 Residential
7384 Schley Road
Brainerd MN 56401