



MLS 7031035 Residential

\$255,000

1,496 sq ft
3 bedrooms
2 baths

1306 Park Street
Brainerd MN 56401

Status: Pending

Description:

Well-located 3 bedroom, 2 bath home in a classic Brainerd neighborhood with beautiful views overlooking Boom Lake and incredible sunset views from the expansive second-floor balcony. The entire upper level functions as a private primary retreat featuring a spacious bedroom, walk-in closet, large bathroom with jetted tub, and a comfortable sitting area with direct access to the balcony—perfect for relaxing and taking in the view. The main floor includes two additional bedrooms and a welcoming living room, while the large mudroom/breezeway connects the home to the attached one-stall garage for easy everyday living, especially during Minnesota winters. Recent updates include new carpet, fresh paint, updated 200-amp electrical service, newer furnace, and stainless steel appliances. A storage shed provides extra space for tools and outdoor gear. A rare opportunity to enjoy lake views, generous living space, and a convenient location close to everything Brainerd has to offer.

Additional Details:

Year Built	1912
Lot Acres	0.23
Lot Dimensions	63x158x63x164
Garage Stalls	1
School District	896
Taxes	\$2,332
Taxes with Assessments	\$2,332
Tax Year	2025

Additional Features:

Basement: Partial **Fuel:** Array **Garage:** 1 **Heat:** Forced Air **Sewer:** City Sewer/Connected **Water:** City Water/Connected **Air Conditioning:** Central Air

Driving Directions:

From E College Drive headed East take a right on Park St. Home is on the right side.



Listed By:
Central MN Realty LLC

Affinity Real Estate Inc. participates in the Regional Multiple Listing Service of Minnesota, Inc Broker Reciprocity (sm) program, allowing us to display other broker's listings on our website. All properties are subject to prior sale, change or withdrawal.



Call Affinity Real Estate

218-237-3333

info@affinityrealestate.com



Affinity Real Estate - 600 Park Avenue South - Park Rapids MN 56470



website: www.AffinityRealEstate.com | email: info@affinityrealestate.com | office: 218-237-3333 | fax:218-237-3377

Affinity
REAL ESTATE INC

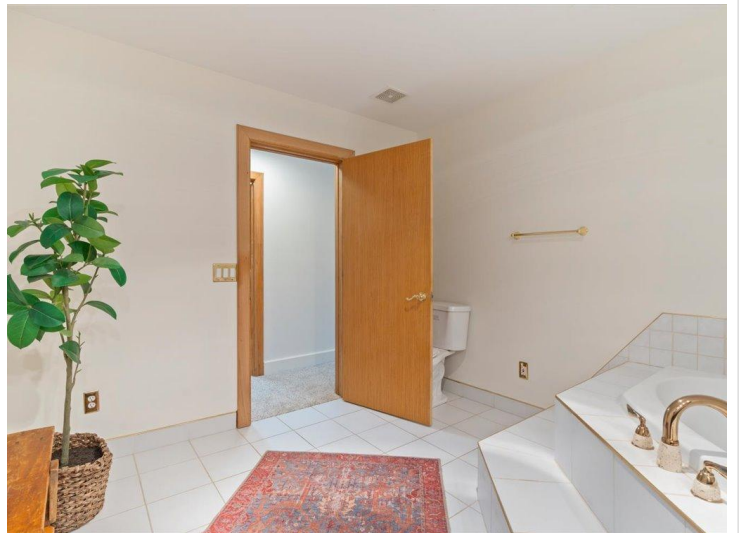
\$255,000
MLS 7031035 Residential
1306 Park Street
Brainerd MN 56401



website: www.AffinityRealEstate.com | email: info@affinityrealestate.com | office: 218-237-3333 | fax:218-237-3377

Affinity
REAL ESTATE INC

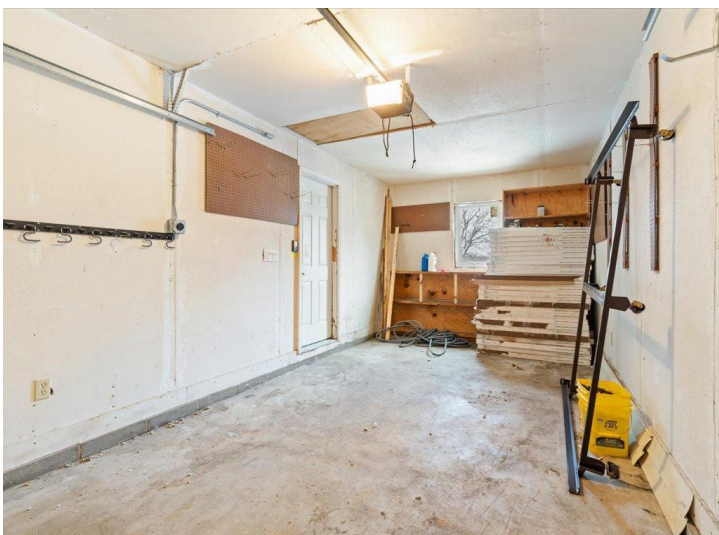
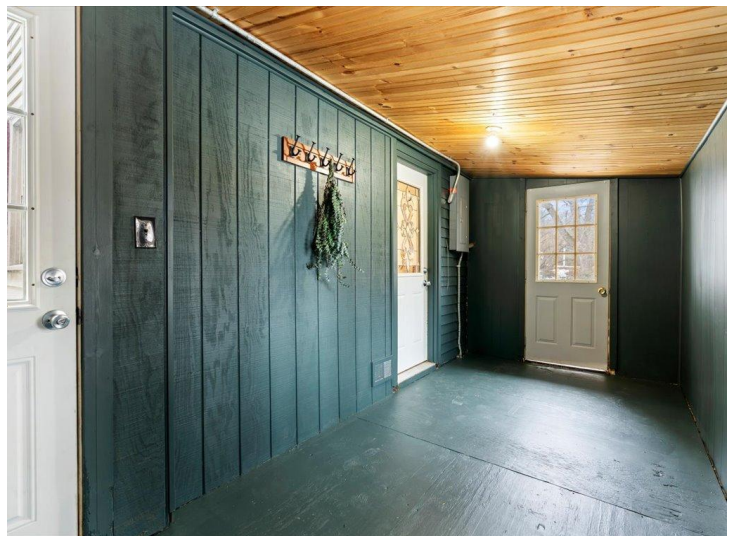
\$255,000
MLS 7031035 Residential
1306 Park Street
Brainerd MN 56401



website: www.AffinityRealEstate.com | email: info@affinityrealestate.com | office: 218-237-3333 | fax:218-237-3377

Affinity
REAL ESTATE INC

\$255,000
MLS 7031035 Residential
1306 Park Street
Brainerd MN 56401



website: www.AffinityRealEstate.com | email: info@affinityrealestate.com | office: 218-237-3333 | fax:218-237-3377

Affinity
REAL ESTATE INC

\$255,000
MLS 7031035 Residential
1306 Park Street
Brainerd MN 56401



website: www.AffinityRealEstate.com | email: info@affinityrealestate.com | office: 218-237-3333 | fax:218-237-3377



\$255,000
MLS 7031035 Residential
1306 Park Street
Brainerd MN 56401