



MLS 7031039 Residential

\$425,000

1,880 sq ft
5 bedrooms
2 baths

22841 Hwy 71
Hines MN 56647

Status: Active

Description:


Picture Perfect Hobby Farm filled with Northwoods ambiance and amenities grace this 23+/- acre homestead: woods, crops, pasture, creek, ponds, fire pit, gardens, windmill, playhouse, and privacy! It also backs up to 80 acres of State land to enjoy your own private access to wildlife in wide open spaces. Hit the Paul Bunyan Trail for snowmobile fun, biking, four-wheeling, or a good ol' fashioned hike! The pleasures of this homespun treasure will lure the most avid of hobbyists. The classic American Farm Red Barn aesthetic draws you in to bleat with the goats and cluck with the chickens! Wake up every morning to farm fresh eggs! The fenced-in hen house ensures your flock is well exercised and producing quality fertilizer to keep your gardens green and growing! Relaxing in your mosquito-free, screened-in porch tops off generations of gatherings and potluck buffets. This uniquely designed two-story boasts 4 bedrooms all on one level, one bath on the main level, and an open concept kitchen-dining-living area all upon a full, unfinished basement. Bring your designs! All new appliances, new hot-water-heat boiler, new water pressure tank, and an updated hot water heater complete this carefree home and make every day chores & laundry feel like a day at the spa!
Effective Year Built 1998; Remodel Year 2023.

The 20x24' 2-story Guest House adds another kitchen, bedroom, bathroom, cozy living/dining room for secluded visits of "Framily"; or simply rent it out for additional income. The large pole shed stores everything from boats, atv's, tools to toys both big and small! So many features, so much you can do. Adventure awaits at this Gem! Live the Life you Love! It starts now.

Additional Details:

Year Built	1923
Lot Acres	22.85
Lot Dimensions	Irregular
Garage Stalls	2
School District	1414
Taxes	\$2,846
Taxes with Assessments	\$2,846
Tax Year	2025

Additional Features:


 er, Fireplace(s), Hot Water
 Listed By:
 RLH Real Estate
 Affinity Real Estate Inc. participates in the Regional Multiple Listing Service of Minnesota, Inc Broker Reciprocity (rm) program, allowing us to display other broker's listings on our website. All properties are subject to prior sale, change or withdrawal.



Call Affinity Real Estate

218-237-3333

info@affinityrealestate.com

Go on Hwy 71 approximately 21 miles (past Hines) to



Affinity Real Estate - 600 Park Avenue South - Park Rapids MN 56470



website: www.AffinityRealEstate.com | email: info@affinityrealestate.com | office: 218-237-3333 | fax: 218-237-3377

Affinity
REAL ESTATE INC

\$425,000
MLS 7031039 Residential
22841 Hwy 71
Hines MN 56647



website: www.AffinityRealEstate.com | email: info@affinityrealestate.com | office: 218-237-3333 | fax:218-237-3377

Affinity
REAL ESTATE INC

\$425,000
MLS 7031039 Residential
22841 Hwy 71
Hines MN 56647



website: www.AffinityRealEstate.com | email: info@affinityrealestate.com | office: 218-237-3333 | fax:218-237-3377

Affinity
REAL ESTATE INC

\$425,000
MLS 7031039 Residential
22841 Hwy 71
Hines MN 56647



website: www.AffinityRealEstate.com | email: info@affinityrealestate.com | office: 218-237-3333 | fax:218-237-3377



\$425,000
MLS 7031039 Residential
22841 Hwy 71
Hines MN 56647



website: www.AffinityRealEstate.com | email: info@affinityrealestate.com | office: 218-237-3333 | fax:218-237-3377

Affinity
REAL ESTATE INC

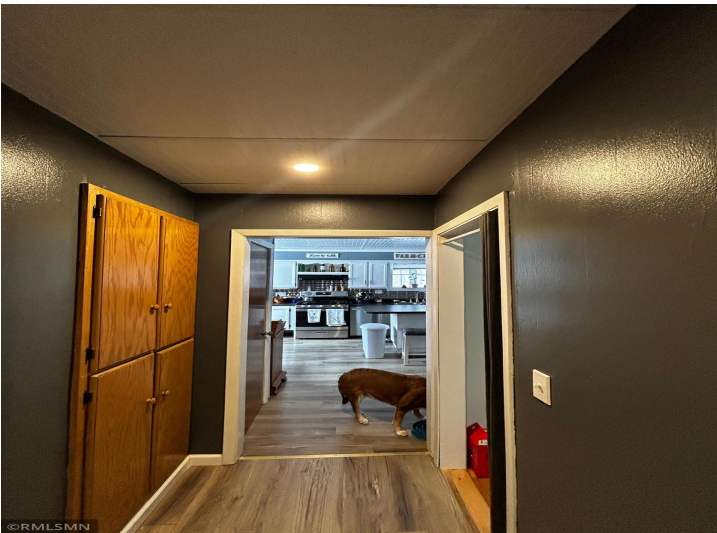
\$425,000
MLS 7031039 Residential
22841 Hwy 71
Hines MN 56647



website: www.AffinityRealEstate.com | email: info@affinityrealestate.com | office: 218-237-3333 | fax:218-237-3377

Affinity
REAL ESTATE INC

\$425,000
MLS 7031039 Residential
22841 Hwy 71
Hines MN 56647



website: www.AffinityRealEstate.com | email: info@affinityrealestate.com | office: 218-237-3333 | fax:218-237-3377

Affinity
REAL ESTATE INC

\$425,000
MLS 7031039 Residential
22841 Hwy 71
Hines MN 56647



website: www.AffinityRealEstate.com | email: info@affinityrealestate.com | office: 218-237-3333 | fax:218-237-3377



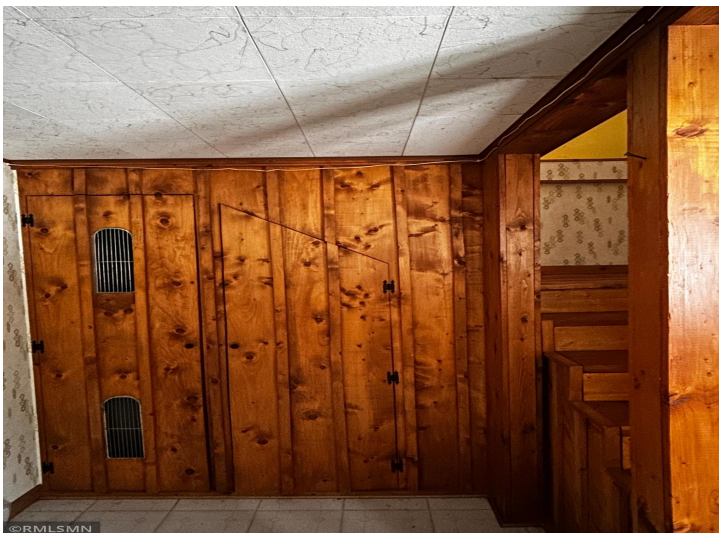
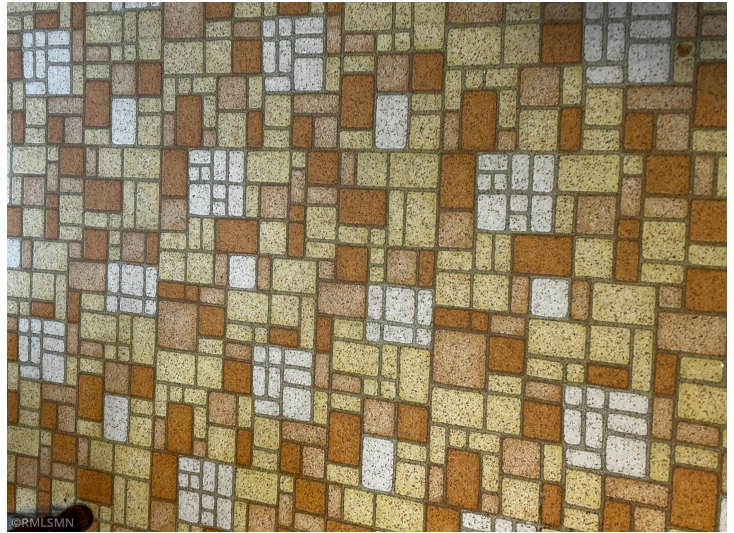
\$425,000
MLS 7031039 Residential
22841 Hwy 71
Hines MN 56647



website: www.AffinityRealEstate.com | email: info@affinityrealestate.com | office: 218-237-3333 | fax:218-237-3377

Affinity
REAL ESTATE INC

\$425,000
MLS 7031039 Residential
22841 Hwy 71
Hines MN 56647



website: www.AffinityRealEstate.com | email: info@affinityrealestate.com | office: 218-237-3333 | fax:218-237-3377



\$425,000
MLS 7031039 Residential
22841 Hwy 71
Hines MN 56647



website: www.AffinityRealEstate.com | email: info@affinityrealestate.com | office: 218-237-3333 | fax:218-237-3377

Affinity
REAL ESTATE INC

\$425,000
MLS 7031039 Residential
22841 Hwy 71
Hines MN 56647



website: www.AffinityRealEstate.com | email: info@affinityrealestate.com | office: 218-237-3333 | fax:218-237-3377



\$425,000
MLS 7031039 Residential
22841 Hwy 71
Hines MN 56647

website: www.AffinityRealEstate.com | email: info@affinityrealestate.com | office: 218-237-3333 | fax:218-237-3377



\$425,000
MLS 7031039 Residential
22841 Hwy 71
Hines MN 56647

website: www.AffinityRealEstate.com | email: info@affinityrealestate.com | office: 218-237-3333 | fax:218-237-3377



\$425,000
MLS 7031039 Residential
22841 Hwy 71
Hines MN 56647

website: www.AffinityRealEstate.com | email: info@affinityrealestate.com | office: 218-237-3333 | fax:218-237-3377



\$425,000
MLS 7031039 Residential
22841 Hwy 71
Hines MN 56647

website: www.AffinityRealEstate.com | email: info@affinityrealestate.com | office: 218-237-3333 | fax:218-237-3377



\$425,000
MLS 7031039 Residential
22841 Hwy 71
Hines MN 56647

website: www.AffinityRealEstate.com | email: info@affinityrealestate.com | office: 218-237-3333 | fax:218-237-3377



\$425,000
MLS 7031039 Residential
22841 Hwy 71
Hines MN 56647

website: www.AffinityRealEstate.com | email: info@affinityrealestate.com | office: 218-237-3333 | fax:218-237-3377



\$425,000
MLS 7031039 Residential
22841 Hwy 71
Hines MN 56647

website: www.AffinityRealEstate.com | email: info@affinityrealestate.com | office: 218-237-3333 | fax:218-237-3377



\$425,000
MLS 7031039 Residential
22841 Hwy 71
Hines MN 56647

website: www.AffinityRealEstate.com | email: info@affinityrealestate.com | office: 218-237-3333 | fax:218-237-3377



\$425,000
MLS 7031039 Residential
22841 Hwy 71
Hines MN 56647