



MLS 7031240 Residential

\$589,000

3,506 sq ft
5 bedrooms
4 baths

9237 Viking Street
Brainerd MN 56468

Status: Active

Description:

This stunning two-story plan has a modern layout to meet family and entertaining needs. The home has a beautiful kitchen with pantry and plenty of counter and storage spaces, XL seating island, dining and great room combination. The owner's suite is private, has a XL bathroom and walk-in closet. All bedrooms have walk-in closets and the laundry room is central to all bedrooms. Options include our range of finish options, a finished lower level(option), fireplace, and more. At Thomas Allen Homes, we believe that crafting your dream home should be a thrilling and seamless experience. Our commitment is to ensure your journey is not just stress-free but exciting. With a range of choice lots in prime locations, the perfect setting for your new home awaits

Additional Details:

Year Built	2026
Lot Acres	0.39
Lot Dimensions	76x246x88x211
Garage Stalls	3
School District	896
Taxes	\$246
Taxes with Assessments	\$246
Tax Year	2025

Additional Features:

Fuel: Array **Heat:** Forced Air

Driving Directions:

FROM Brainerd, North past Ice Arena on Riverside to left on Beaver Dam Rd to right on Northtown St to right on Warrior to left on Viking St. FROM 371, East on Wise Rd (Cty 49) to Right on Beaver Dam Rd to left on Northtown Street to right on Warrior to left on Viking St.



Listed By:
Edina Realty, Inc.

Affinity Real Estate Inc. participates in the Regional Multiple Listing Service of Minnesota, Inc Broker Reciprocity (sm) program, allowing us to display other broker's listings on our website. All properties are subject to prior sale, change or withdrawal.



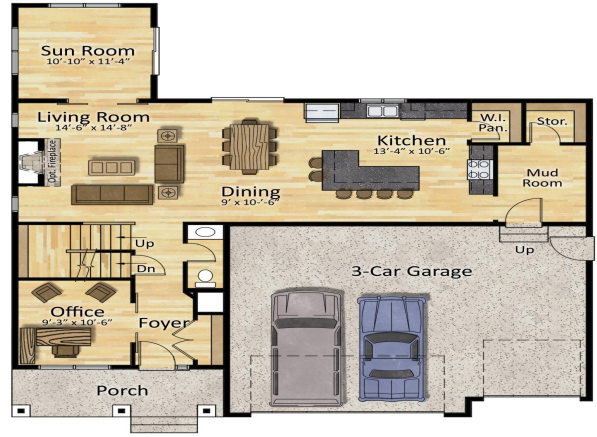
Call Affinity Real Estate

218-237-3333

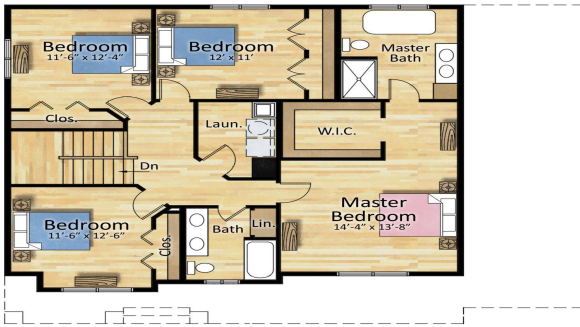
info@affinityrealestate.com



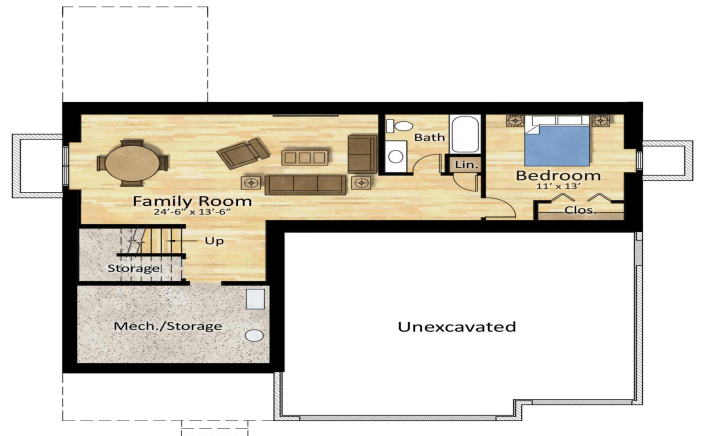
Affinity Real Estate - 600 Park Avenue South - Park Rapids MN 56470



First Floor Plan



Upper Floor Plan



Lower Floor Plan



website: www.AffinityRealEstate.com | email: info@affinityrealestate.com | office: 218-237-3333 | fax: 218-237-3377



\$589,000
 MLS 7031240 Residential
 9237 Viking Street
 Brainerd MN 56468



website: www.AffinityRealEstate.com | email: info@affinityrealestate.com | office: 218-237-3333 | fax:218-237-3377



\$589,000
MLS 7031240 Residential
9237 Viking Street
Brainerd MN 56468