



MLS 7031566 Residential

\$649,900

1,864 sq ft
3 bedrooms
2 baths

TBD Maplewood Ridge Road
Brainerd MN 56401

Status: Active

Description:

Welcome to your future dream home near beautiful East gull Lake. This is to-be-built 3 bed, 2 bath offers the ease and comfort of one level living combined with the appeal of brand-new construction. This open concept floor plan will feature a spacious, living area, perfect for entertaining or relaxing. The thoughtfully designed kitchen features ample cabinetry and a center island. The private primary suite will include a walk-in closet, and a well-appointed en-suite bath along with 2 additional spacious bedrooms. Situated just minutes from Gull Lake, this to-be-built home offers a peaceful setting with easy access to lakes, golf courses, dining, and all the Brainers Lakes has to offer. Secure your opportunity to customize and make this brand-new home truly your own.

Additional Details:

Year Built	2026
Lot Acres	2.5
Lot Dimensions	135.71x555.61x250.55x576.07
Garage Stalls	2
School District	896
Taxes	\$95
Taxes with Assessments	\$95
Tax Year	2026

Additional Features:

Basement: None **Fuel:** Array **Garage:** 2 **Heat:** Forced Air, In-Floor Heating **Sewer:** Private Sewer **Water:** Well **Air Conditioning:** Central Air

Driving Directions:

From 371/210 Intersection take Hwy 210 W until you reach Hwy 18 turn North until you turn R on Maplewood Ridge Rd. Destination on the left.



Listed By:
LPT Realty, LLC.

Affinity Real Estate Inc. participates in the Regional Multiple Listing Service of Minnesota, Inc Broker Reciprocity (sm) program, allowing us to display other broker's listings on our website. All properties are subject to prior sale, change or withdrawal.



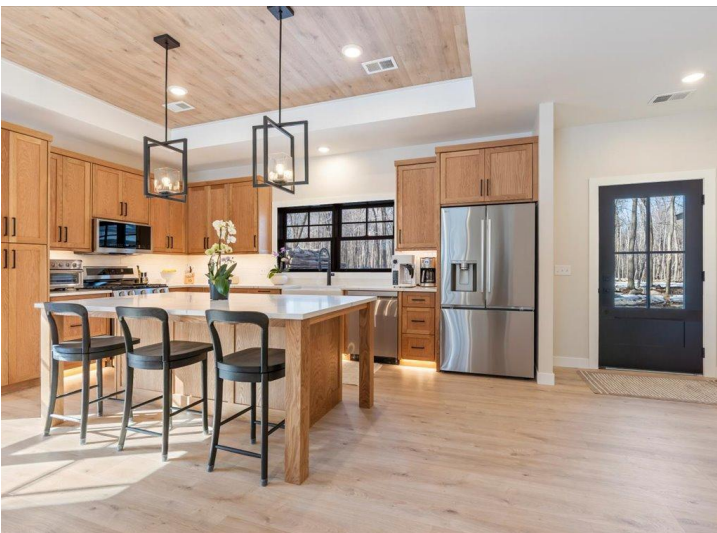
Call Affinity Real Estate

218-237-3333

info@affinityrealestate.com



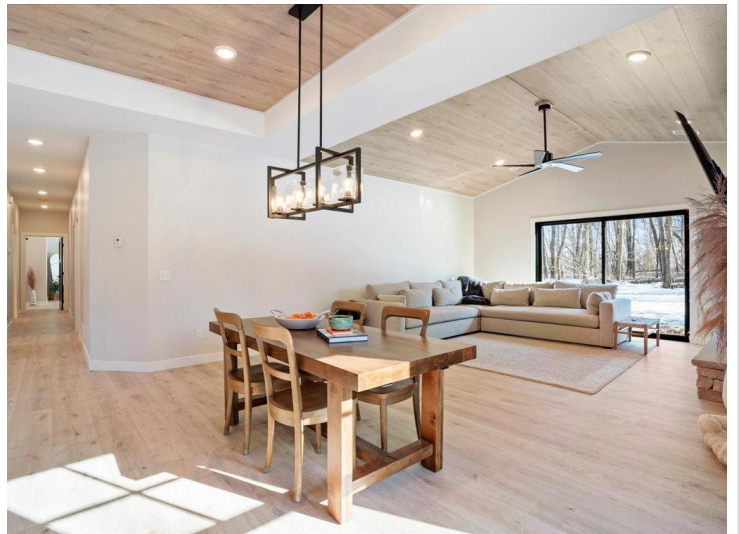
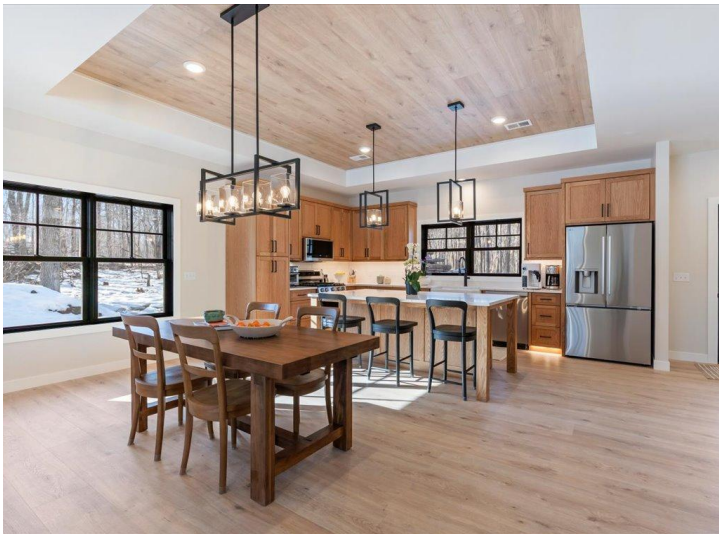
Affinity Real Estate - 600 Park Avenue South - Park Rapids MN 56470



website: www.AffinityRealEstate.com | email: info@affinityrealestate.com | office: 218-237-3333 | fax: 218-237-3377



\$649,900
MLS 7031566 Residential
TBD Maplewood Ridge Road
Brainerd MN 56401



website: www.AffinityRealEstate.com | email: info@affinityrealestate.com | office: 218-237-3333 | fax: 218-237-3377

Affinity
REAL ESTATE INC

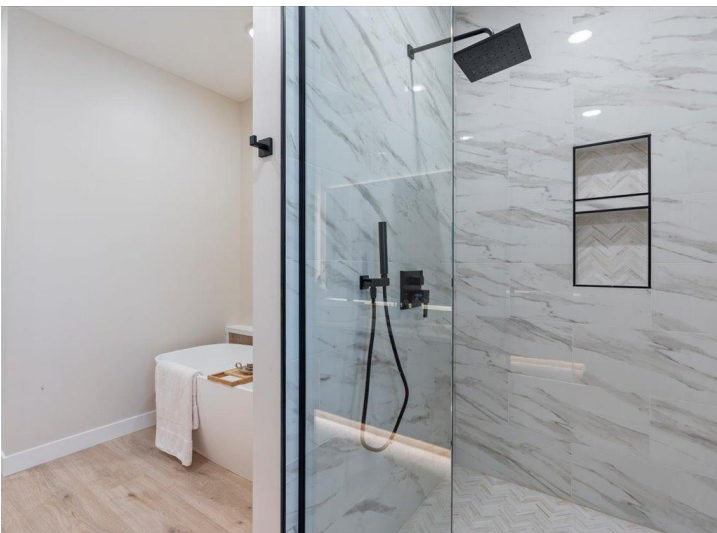
\$649,900
MLS 7031566 Residential
TBD Maplewood Ridge Road
Brainerd MN 56401



website: www.AffinityRealEstate.com | email: info@affinityrealestate.com | office: 218-237-3333 | fax:218-237-3377

Affinity
REAL ESTATE INC

\$649,900
MLS 7031566 Residential
TBD Maplewood Ridge Road
Brainerd MN 56401



website: www.AffinityRealEstate.com | email: info@affinityrealestate.com | office: 218-237-3333 | fax:218-237-3377



\$649,900
MLS 7031566 Residential
TBD Maplewood Ridge Road
Brainerd MN 56401



website: www.AffinityRealEstate.com | email: info@affinityrealestate.com | office: 218-237-3333 | fax: 218-237-3377

Affinity
REAL ESTATE INC

\$649,900
MLS 7031566 Residential
TBD Maplewood Ridge Road
Brainerd MN 56401



website: www.AffinityRealEstate.com | email: info@affinityrealestate.com | office: 218-237-3333 | fax:218-237-3377



\$649,900
MLS 7031566 Residential
TBD Maplewood Ridge Road
Brainerd MN 56401