



MLS 7031779 Residential

\$924,900

3,222 sq ft
4 bedrooms
3 baths

5114 Park Irene Drive
Miltona MN 56354

Status: Coming Soon

Description:

Beautiful lake home with panoramic sunset views. This well-maintained home offers warm decor and a thoughtfully designed open layout featuring vaulted ceilings, 2 stone gas fireplaces, a charming knotty pine sunroom, and a walkout with in-floor heat. Enjoy a spacious paver patio with a cozy wood burning fireplace, a large paver walkway and multiple decks. The shoreline features hard sandy/gravel frontage and clear water — perfect for swimming. The lake offers great fishing, a winery, a restaurant and has plenty of room for all your favorite water activities. The active lake association hosts fun social events and takes great care of the lake quality. Residents say the lake is the best it has ever been! The fully finished three-stall garage has epoxy flooring, heat, and built-in cabinetry, perfect for hobbies, storage, or entertaining. Dreams do come true - start enjoying the lake lifestyle this summer! The listing agent is the seller.

Additional Details:


Year Built	2001
Lot Acres	0.68
Lot Dimensions	164 x 231 x 102 x 214
Garage Stalls	3
School District	206
Taxes	\$5,374
Taxes with Assessments	\$5,374
Tax Year	2025

Additional Features:

Basement: Daylight/Lookout Windows, Egress Window(s), Finished, Full, Concrete, Storage Space, Walkout **Fuel:** Array **Garage:** 3 **Heat:** Forced Air, Fireplace(s), In-Floor Heating **Sewer:** Private Sewer, Septic System Compliant - Yes **Water:** Private, Well **Air Conditioning:** Central Air

Driving Directions:

From Alexandria, take Hwy 29 North, turn right on Co Rd 14, turn left on Co Rd 64, turn left on Park Irene Dr NE to home on the left.

 Listed By:
Realty ONE Group Choice

Affinity Real Estate Inc. participates in the Regional Multiple Listing Service of Minnesota, Inc Broker Reciprocity (sm) program, allowing us to display other broker's listings on our website. All properties are subject to prior sale, change or withdrawal.

 **Call Affinity Real Estate**
218-237-3333
info@affinityrealestate.com

Affinity Real Estate - 600 Park Avenue South - Park Rapids MN 56470



website: www.AffinityRealEstate.com | email: info@affinityrealestate.com | office: 218-237-3333 | fax:218-237-3377



\$924,900
MLS 7031779 Residential
5114 Park Irene Drive
Miltona MN 56354



website: www.AffinityRealEstate.com | email: info@affinityrealestate.com | office: 218-237-3333 | fax:218-237-3377



\$924,900
MLS 7031779 Residential
5114 Park Irene Drive
Miltona MN 56354



website: www.AffinityRealEstate.com | email: info@affinityrealestate.com | office: 218-237-3333 | fax:218-237-3377



\$924,900
MLS 7031779 Residential
5114 Park Irene Drive
Miltona MN 56354



website: www.AffinityRealEstate.com | email: info@affinityrealestate.com | office: 218-237-3333 | fax:218-237-3377

Affinity
REAL ESTATE INC

\$924,900
MLS 7031779 Residential
5114 Park Irene Drive
Miltona MN 56354



website: www.AffinityRealEstate.com | email: info@affinityrealestate.com | office: 218-237-3333 | fax: 218-237-3377

Affinity
REAL ESTATE INC

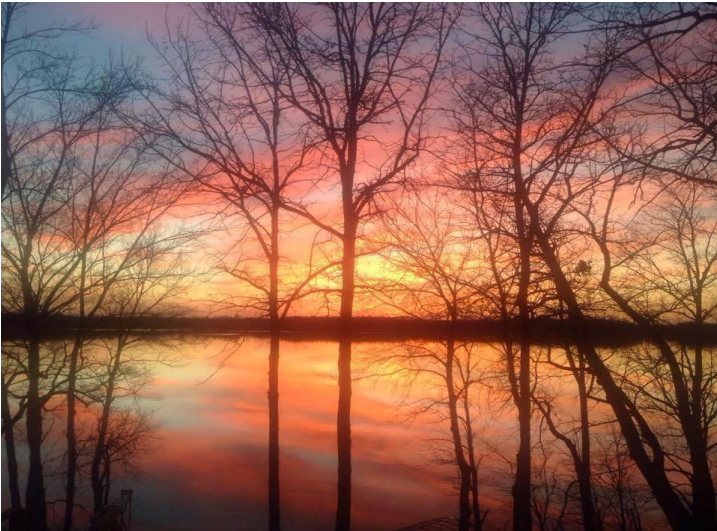
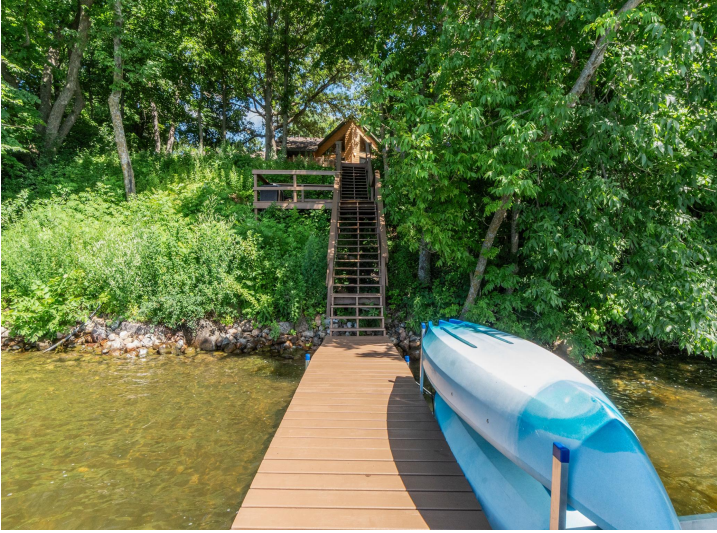
\$924,900
MLS 7031779 Residential
5114 Park Irene Drive
Miltona MN 56354



website: www.AffinityRealEstate.com | email: info@affinityrealestate.com | office: 218-237-3333 | fax:218-237-3377



\$924,900
MLS 7031779 Residential
5114 Park Irene Drive
Miltona MN 56354

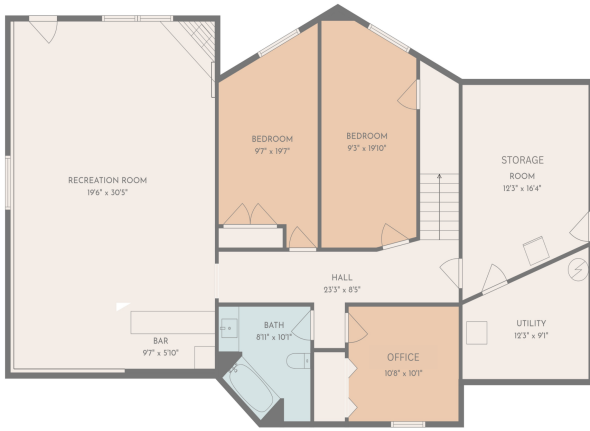


TOTAL: 3289 sq. ft.
 1st floor: 1583 sq. ft., 2nd floor: 1706 sq. ft.
 EXCLUDED AREAS: UTILITY: 111 sq. ft., WALLS: 186 sq. ft.
ROOM PLAN CREATED BY CIRCULARAPPLY. MEASUREMENTS SHOWN ARE APPROXIMATE AND NOT GUARANTEED.

website: www.AffinityRealEstate.com | email: info@affinityrealestate.com | office: 218-237-3333 | fax: 218-237-3377



\$924,900
 MLS 7031779 Residential
 5114 Park Irene Drive
 Miliona MN 56354



TOTAL: 3289 sq. ft.
1st floor: 1583 sq. ft. 2nd floor: 1706 sq. ft.
EXCLUDED AREAS: UTILITY: 111 sq. ft. WALLS: 186 sq. ft.

website: www.AffinityRealEstate.com | email: info@affinityrealestate.com | office: 218-237-3333 | fax: 218-237-3377



\$924,900
MLS 7031779 Residential
5114 Park Irene Drive
Miltona MN 56354