



MLS 7033075 Residential

**\$364,900**

3,166 sq ft  
6 bedrooms  
3 baths

35445 County Highway 36  
Vergas MN 56587

Status: Active



**Description:**

Well, Hello Home Buyer- I think you should trade streetlights for starry nights right here in rural Vergas! I absolutely recommend this 6-bedroom, 3-bathroom home situated on nearly 2 acres, complete with a large 30x40 heated shop. Take in the open-concept kitchen and living area, an impressive kitchen with large island, stainless steel appliances, and a cozy sunroom calling your name to relax in! The main level includes a primary suite with a full bathroom, jetted tub, and walk-in closet. Plus an additional full bathroom and convenient main floor laundry. This home has not one, but two staircases- that lead to two totally separate upstairs areas— One side has 2 bedrooms; the other has 2 more bedrooms, a storage room, and a 3/4 bathroom. The lower level features an impressive bedroom, a family room, and lots of storage space. Take in the 30 x 40 shop with 14-foot side walls, water service, a floor drain, and a car lift along with an attached 17 x 22 storage area. In addition, a bonus "Schoolhouse" storage building for more of your outdoor goodies. Say, Home Buyer- Are you ready to buy this property?

**Additional Details:**

Year Built	1978
Lot Acres	1.89
Lot Dimensions	Irregular
Garage Stalls	2
School District	1955
Taxes	\$2,526
Taxes with Assessments	\$85
Tax Year	2025

**Additional Features:**

**Fuel:** Array **Heat:** Dual Fuel/Off Peak, Forced Air

**Driving Directions:**

35445 Co Hwy 36 Vergas MN 56587, Turn SW onto W Linden St. Continue onto S Pelican Ave. Turn SE onto E Looney Ln. Turn E onto Co Hwy 36. The destination will be on the left.



Listed By:  
Keller Williams Realty Profess

Affinity Real Estate Inc. participates in the Regional Multiple Listing Service of Minnesota, Inc Broker Reciprocity (sm) program, allowing us to display other broker's listings on our website. All properties are subject to prior sale, change or withdrawal.



**Call Affinity Real Estate**

**218-237-3333**

**info@affinityrealestate.com**



**Affinity Real Estate - 600 Park Avenue South - Park Rapids MN 56470**



website: [www.AffinityRealEstate.com](http://www.AffinityRealEstate.com) | email: [info@affinityrealestate.com](mailto:info@affinityrealestate.com) | office: 218-237-3333 | fax: 218-237-3377



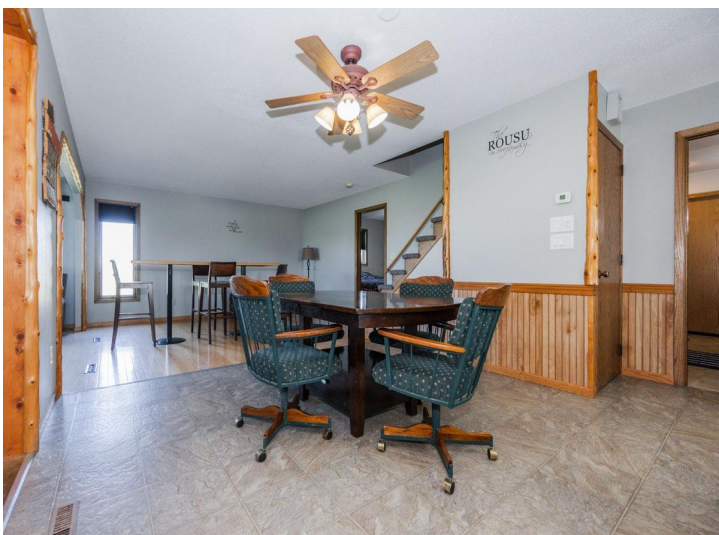
**\$364,900**  
MLS 7033075 Residential  
35445 County Highway 36  
Vergas MN 56587



website: [www.AffinityRealEstate.com](http://www.AffinityRealEstate.com) | email: [info@affinityrealestate.com](mailto:info@affinityrealestate.com) | office: 218-237-3333 | fax: 218-237-3377

**Affinity**  
REAL ESTATE INC

**\$364,900**  
MLS 7033075 Residential  
35445 County Highway 36  
Vergas MN 56587



website: [www.AffinityRealEstate.com](http://www.AffinityRealEstate.com) | email: [info@affinityrealestate.com](mailto:info@affinityrealestate.com) | office: 218-237-3333 | fax: 218-237-3377

**Affinity**  
REAL ESTATE INC

**\$364,900**  
MLS 7033075 Residential  
35445 County Highway 36  
Vergas MN 56587



website: [www.AffinityRealEstate.com](http://www.AffinityRealEstate.com) | email: [info@affinityrealestate.com](mailto:info@affinityrealestate.com) | office: 218-237-3333 | fax:218-237-3377

**Affinity**  
REAL ESTATE INC

**\$364,900**  
MLS 7033075 Residential  
35445 County Highway 36  
Vergas MN 56587



website: [www.AffinityRealEstate.com](http://www.AffinityRealEstate.com) | email: [info@affinityrealestate.com](mailto:info@affinityrealestate.com) | office: 218-237-3333 | fax: 218-237-3377

**Affinity**  
REAL ESTATE INC

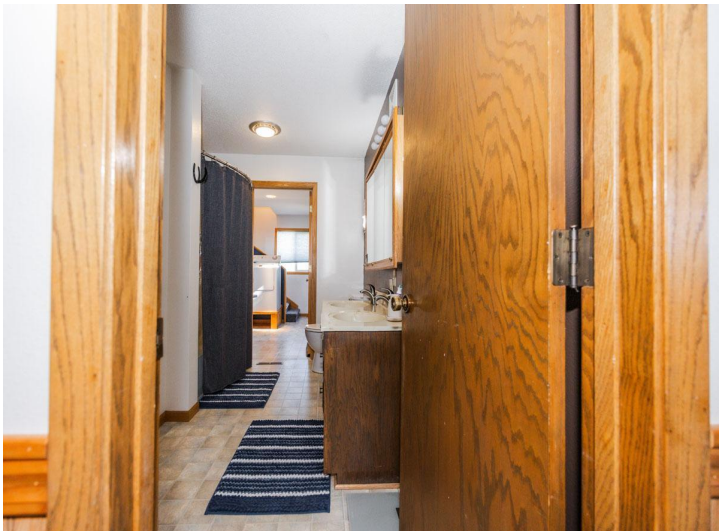
**\$364,900**  
MLS 7033075 Residential  
35445 County Highway 36  
Vergas MN 56587



website: [www.AffinityRealEstate.com](http://www.AffinityRealEstate.com) | email: [info@affinityrealestate.com](mailto:info@affinityrealestate.com) | office: 218-237-3333 | fax: 218-237-3377

**Affinity**  
REAL ESTATE INC

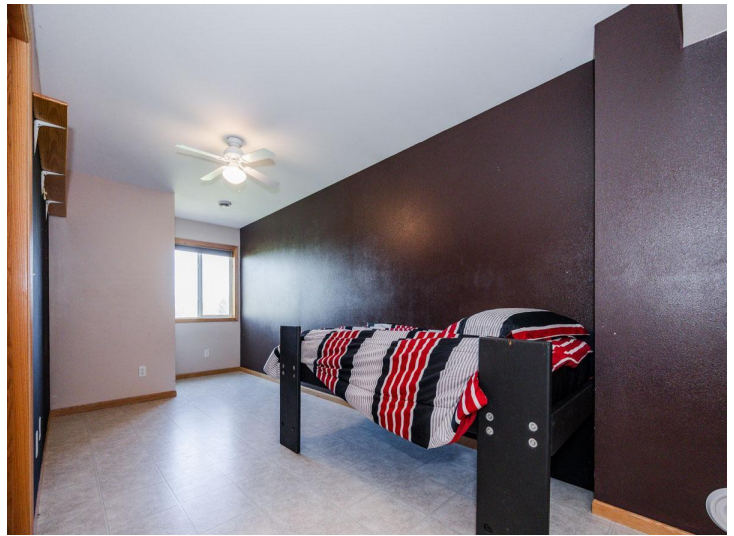
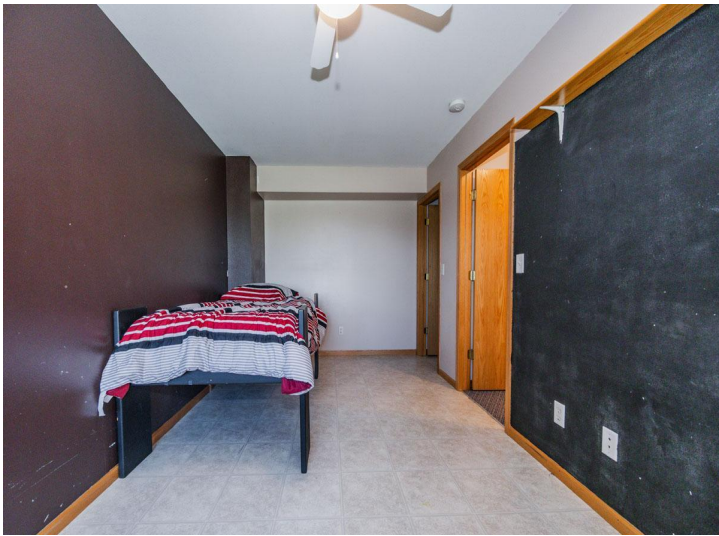
**\$364,900**  
MLS 7033075 Residential  
35445 County Highway 36  
Vergas MN 56587



website: [www.AffinityRealEstate.com](http://www.AffinityRealEstate.com) | email: [info@affinityrealestate.com](mailto:info@affinityrealestate.com) | office: 218-237-3333 | fax:218-237-3377

**Affinity**  
REAL ESTATE INC

**\$364,900**  
MLS 7033075 Residential  
35445 County Highway 36  
Vergas MN 56587



website: [www.AffinityRealEstate.com](http://www.AffinityRealEstate.com) | email: [info@affinityrealestate.com](mailto:info@affinityrealestate.com) | office: 218-237-3333 | fax:218-237-3377



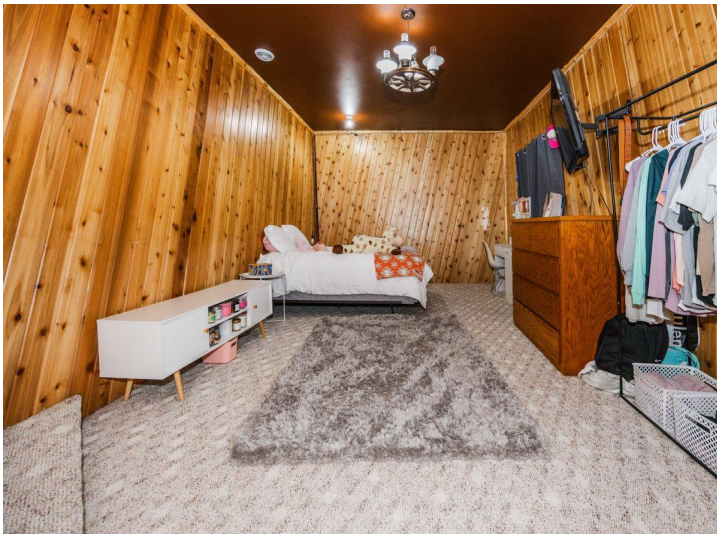
**\$364,900**  
MLS 7033075 Residential  
35445 County Highway 36  
Vergas MN 56587



website: [www.AffinityRealEstate.com](http://www.AffinityRealEstate.com) | email: [info@affinityrealestate.com](mailto:info@affinityrealestate.com) | office: 218-237-3333 | fax:218-237-3377

**Affinity**  
REAL ESTATE INC

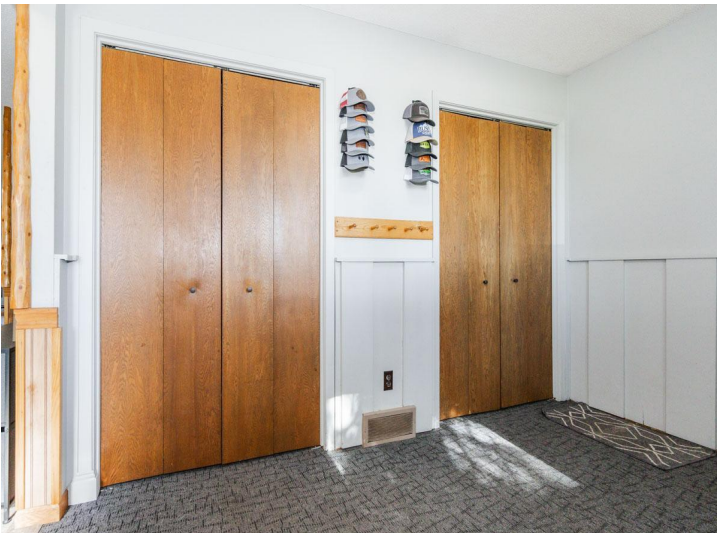
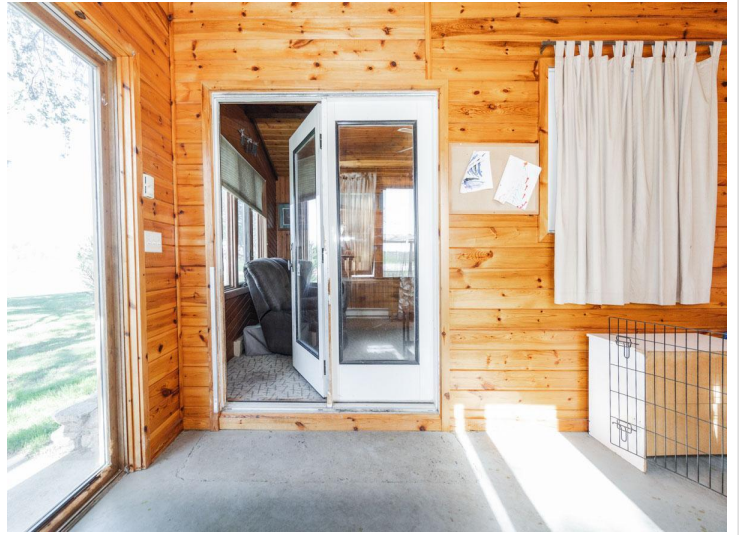
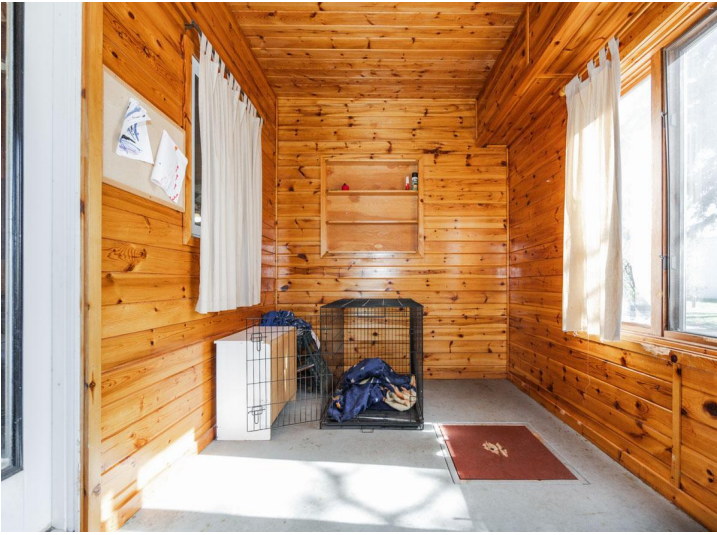
**\$364,900**  
MLS 7033075 Residential  
35445 County Highway 36  
Vergas MN 56587



website: [www.AffinityRealEstate.com](http://www.AffinityRealEstate.com) | email: [info@affinityrealestate.com](mailto:info@affinityrealestate.com) | office: 218-237-3333 | fax:218-237-3377

**Affinity**  
REAL ESTATE INC

**\$364,900**  
MLS 7033075 Residential  
35445 County Highway 36  
Vergas MN 56587



website: [www.AffinityRealEstate.com](http://www.AffinityRealEstate.com) | email: [info@affinityrealestate.com](mailto:info@affinityrealestate.com) | office: 218-237-3333 | fax:218-237-3377



**\$364,900**  
MLS 7033075 Residential  
35445 County Highway 36  
Vergas MN 56587



website: [www.AffinityRealEstate.com](http://www.AffinityRealEstate.com) | email: [info@affinityrealestate.com](mailto:info@affinityrealestate.com) | office: 218-237-3333 | fax:218-237-3377



**\$364,900**  
MLS 7033075 Residential  
35445 County Highway 36  
Vergas MN 56587



website: [www.AffinityRealEstate.com](http://www.AffinityRealEstate.com) | email: [info@affinityrealestate.com](mailto:info@affinityrealestate.com) | office: 218-237-3333 | fax:218-237-3377

**Affinity**  
REAL ESTATE INC

**\$364,900**  
MLS 7033075 Residential  
35445 County Highway 36  
Vergas MN 56587



website: [www.AffinityRealEstate.com](http://www.AffinityRealEstate.com) | email: [info@affinityrealestate.com](mailto:info@affinityrealestate.com) | office: 218-237-3333 | fax:218-237-3377



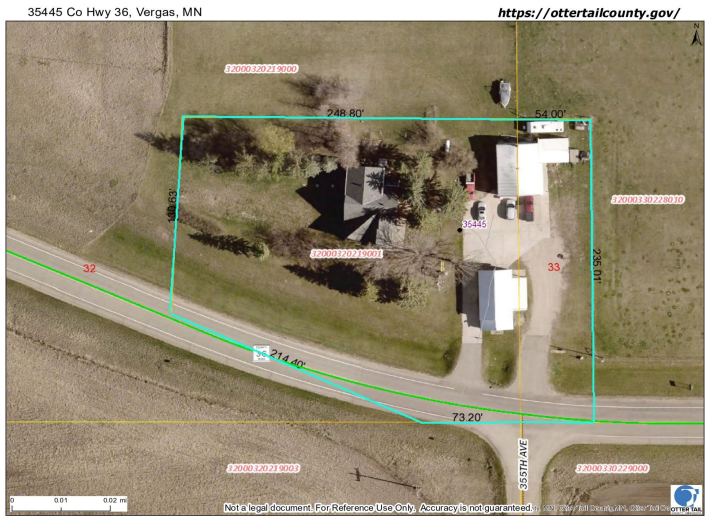
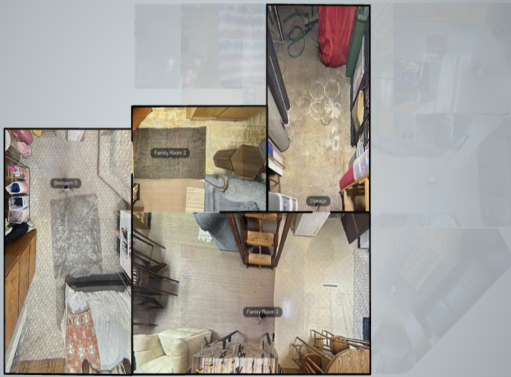
**\$364,900**  
MLS 7033075 Residential  
35445 County Highway 36  
Vergas MN 56587



website: [www.AffinityRealEstate.com](http://www.AffinityRealEstate.com) | email: [info@affinityrealestate.com](mailto:info@affinityrealestate.com) | office: 218-237-3333 | fax:218-237-3377

**Affinity**  
REAL ESTATE INC

**\$364,900**  
MLS 7033075 Residential  
35445 County Highway 36  
Vergas MN 56587



35445 Co Hwy 36, Vergas, MN

<https://ottertailcounty.gov/>

website: [www.AffinityRealEstate.com](http://www.AffinityRealEstate.com) | email: [info@affinityrealestate.com](mailto:info@affinityrealestate.com) | office: 218-237-3333 | fax:218-237-3377



**\$364,900**  
MLS 7033075 Residential  
35445 County Highway 36  
Vergas MN 56587