



MLS 7033098 Residential

\$649,000

1,851 sq ft
3 bedrooms
3 baths

39332 Orchid Trail
Laporte MN 56461

Status: Active

Description:

This newly constructed 3-bedroom, 2-bathroom riverside retreat has so much to offer. It features high-quality materials and finishes, including a Marvin window package, vaulted ceilings, and a custom kitchen with quartz countertops and a center island. The primary suite is conveniently located on the main level, along with two additional bedrooms on the lower level. For optimal efficiency, the home is equipped with in-floor heating, forced air gas, central air conditioning, and an off-peak plenum heater. The exterior boasts a spacious 12x34-foot deck and a covered side deck, as well as a walkout basement with a stamped patio. The maintenance-free LP siding ensures easy upkeep. Additionally, the property includes a fully finished and heated triple garage. Set on a 2.51-acre lot, this home offers a delightful mix of tree cover and frontage along the Kabekona River.

Additional Details:

Year Built	2026
Lot Acres	2.51
Lot Dimensions	200x464x265x559
Garage Stalls	3
School District	1375
Taxes	\$198
Taxes with Assessments	\$198
Tax Year	2025

Additional Features:

Basement: Egress Window(s), Finished, Full **Fuel:** Array **Garage:** 3 **Heat:** Boiler, Dual Fuel/Off Peak, Forced Air, Heat Pump, Hot Water, In-Floor Heating **Sewer:** Tank with Drainage Field **Water:** 4-Inch Submersible **Air Conditioning:** Central Air, Heat Pump

Driving Directions:

From 34/71 in Park Rapids, North on 71 to State 200. Take a right on 200 to a left on Otter Dr. to an immediate right on Orchid Trail to property.



Listed By:
Wolff & Simon Real Estate

Affinity Real Estate Inc. participates in the Regional Multiple Listing Service of Minnesota, Inc Broker Reciprocity (sm) program, allowing us to display other broker's listings on our website. All properties are subject to prior sale, change or withdrawal.



Call Affinity Real Estate

218-237-3333

info@affinityrealestate.com



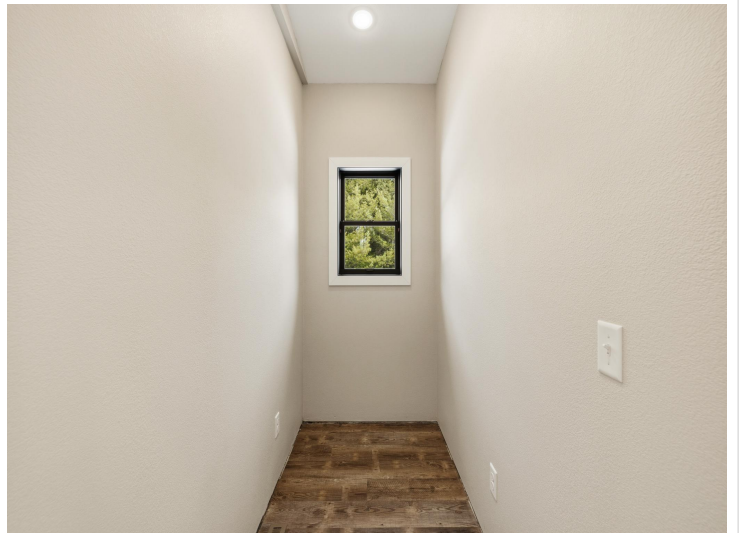
Affinity Real Estate - 600 Park Avenue South - Park Rapids MN 56470



website: www.AffinityRealEstate.com | email: info@affinityrealestate.com | office: 218-237-3333 | fax: 218-237-3377

Affinity
REAL ESTATE INC

\$649,000
MLS 7033098 Residential
39332 Orchid Trail
Laporte MN 56461



website: www.AffinityRealEstate.com | email: info@affinityrealestate.com | office: 218-237-3333 | fax:218-237-3377



\$649,000
MLS 7033098 Residential
39332 Orchid Trail
Laporte MN 56461



website: www.AffinityRealEstate.com | email: info@affinityrealestate.com | office: 218-237-3333 | fax: 218-237-3377



\$649,000
MLS 7033098 Residential
39332 Orchid Trail
Laporte MN 56461



website: www.AffinityRealEstate.com | email: info@affinityrealestate.com | office: 218-237-3333 | fax:218-237-3377



\$649,000
MLS 7033098 Residential
39332 Orchid Trail
Laporte MN 56461



website: www.AffinityRealEstate.com | email: info@affinityrealestate.com | office: 218-237-3333 | fax:218-237-3377



\$649,000
MLS 7033098 Residential
39332 Orchid Trail
Laporte MN 56461



website: www.AffinityRealEstate.com | email: info@affinityrealestate.com | office: 218-237-3333 | fax:218-237-3377



\$649,000
MLS 7033098 Residential
39332 Orchid Trail
Laporte MN 56461