



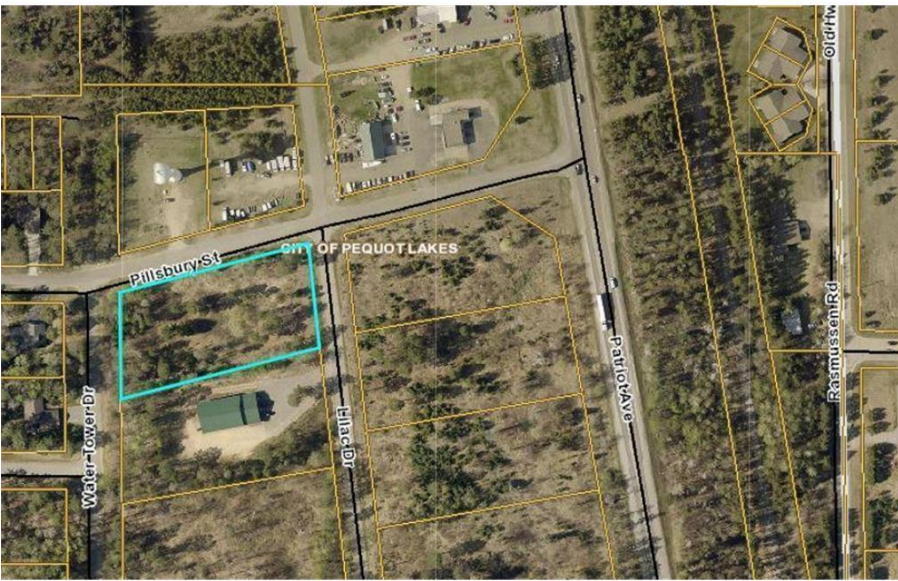
MLS 7033402 Land

\$89,000

1.49 Acres
Raw Land

Pillsbury and Lilac XX
Pequot Lakes MN 56472

Status: Active



Description:

(description unavailable)

Additional Details:

Lot Acres	1.49
Lot Dimensions	345x189x364x186
School District	909
Taxes	\$239
Taxes with Assessments	(unreported)
Tax Year	2025

Additional Features:

Driving Directions:

Turn



Listed By:
Lakes & Leisure Realty

Affinity Real Estate Inc. participates in the Regional Multiple Listing Service of Minnesota, Inc Broker Reciprocity (sm) program, allowing us to display other broker's listings on our website. All properties are subject to prior sale, change or withdrawal.



Call Affinity Real Estate

218-237-3333

info@affinityrealestate.com



Affinity Real Estate - 600 Park Avenue South - Park Rapids MN 56470



website: www.AffinityRealEstate.com | email: info@affinityrealestate.com | office: 218-237-3333 | fax:218-237-3377



\$89,000
MLS 7033402 Land
Pillsbury and Lilac XX
Pequot Lakes MN 56472