



MLS 7033468 Residential

\$304,900

1,568 sq ft
2 bedrooms
2 baths

6249 Sandy Drive
Bemidji MN 56601

Status: Pending

Description:

2-bedroom, 2-bath home built in 2007, sitting on 3 acres just east of Bemidji. Open concept main floor features a vaulted tongue and groove ceiling and gas fireplace. Step out onto the covered deck and take in the wooded surroundings. The property has a large garden, shed, and chicken coop already in place. Oversized detached 2-car garage plus an existing concrete slab for easy expansion. Shared easement access to Little Bass Lake

Additional Details:

Year Built	2007
Lot Acres	3.56
Lot Dimensions	620x76x305x404x300
Garage Stalls	2
School District	1386
Taxes	\$2,976
Taxes with Assessments	\$2,976
Tax Year	2025

Additional Features:

Basement: None **Fuel:** Array **Garage:** 2 **Heat:** Forced Air **Sewer:** Private Sewer, Tank with Drainage Field **Water:** Private, Well **Air Conditioning:** Wall Unit(s)

Driving Directions:

North on Bemidji Rd to right on Birchmont Beach past Country Club, approx. 4 miles. Right on Tall Pines, left on Sandy Dr., home on the right.



Listed By:
218 Real Estate

Affinity Real Estate Inc. participates in the Regional Multiple Listing Service of Minnesota, Inc Broker Reciprocity (sm) program, allowing us to display other broker's listings on our website. All properties are subject to prior sale, change or withdrawal.



Call Affinity Real Estate

218-237-3333

info@affinityrealestate.com



Affinity Real Estate - 600 Park Avenue South - Park Rapids MN 56470



website: www.AffinityRealEstate.com | email: info@affinityrealestate.com | office: 218-237-3333 | fax:218-237-3377



\$304,900
MLS 7033468 Residential
6249 Sandy Drive
Bemidji MN 56601



website: www.AffinityRealEstate.com | email: info@affinityrealestate.com | office: 218-237-3333 | fax:218-237-3377



\$304,900
MLS 7033468 Residential
6249 Sandy Drive
Bemidji MN 56601



website: www.AffinityRealEstate.com | email: info@affinityrealestate.com | office: 218-237-3333 | fax:218-237-3377

Affinity
REAL ESTATE INC

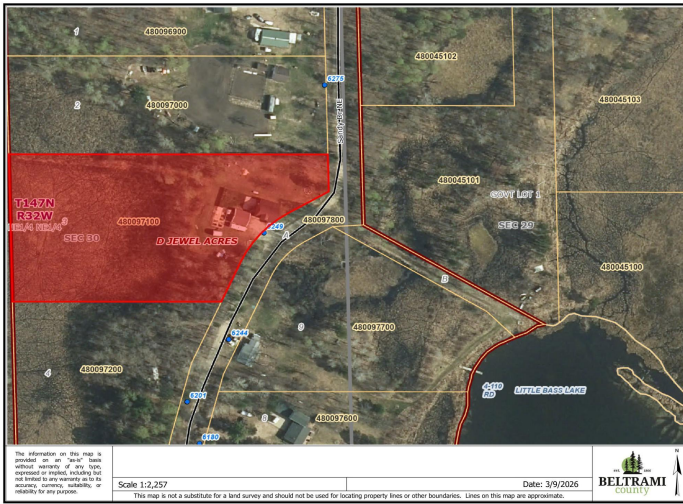
\$304,900
MLS 7033468 Residential
6249 Sandy Drive
Bemidji MN 56601



website: www.AffinityRealEstate.com | email: info@affinityrealestate.com | office: 218-237-3333 | fax:218-237-3377



\$304,900
MLS 7033468 Residential
6249 Sandy Drive
Bemidji MN 56601



website: www.AffinityRealEstate.com | email: info@affinityrealestate.com | office: 218-237-3333 | fax: 218-237-3377



\$304,900
 MLS 7033468 Residential
 6249 Sandy Drive
 Bemidji MN 56601