



MLS 7033683 Land

**\$599,900**

158.93 Acres  
Raw Land

TBD 65th Avenue  
Motley MN 56466

Status: Coming Soon

**Description:**

This hunter's paradise is the perfect spot to set up deer camp with the family! Located conveniently just north of Motley, this property is easy to access and ready for the next owners to make it their own. Complete with established trails throughout, several permanent deer stands, and a great mix of high and low land, this property has it all! The star of the show is the creek that runs directly through the property, attracting all kinds of wildlife, including turkeys, deer, and even bears! This one will not be around very long. Schedule Your Showing Today!

**Additional Details:**

Lot Acres	158.93
Lot Dimensions	2607x2631
School District	2170
Taxes	\$1,974
Taxes with Assessments	\$1,974
Tax Year	2025

**Additional Features:**

**Driving Directions:**

Heading West on 201, take a right on 65th Ave Sw. Head north, take a left on 112th St Sw. in a half a mile, turn left onto the easement



Listed By:  
eXp Realty

Affinity Real Estate Inc. participates in the Regional Multiple Listing Service of Minnesota, Inc Broker Reciprocity (sm) program, allowing us to display other broker's listings on our website. All properties are subject to prior sale, change or withdrawal.



Call Affinity Real Estate

**218-237-3333**

[info@affinityrealestate.com](mailto:info@affinityrealestate.com)



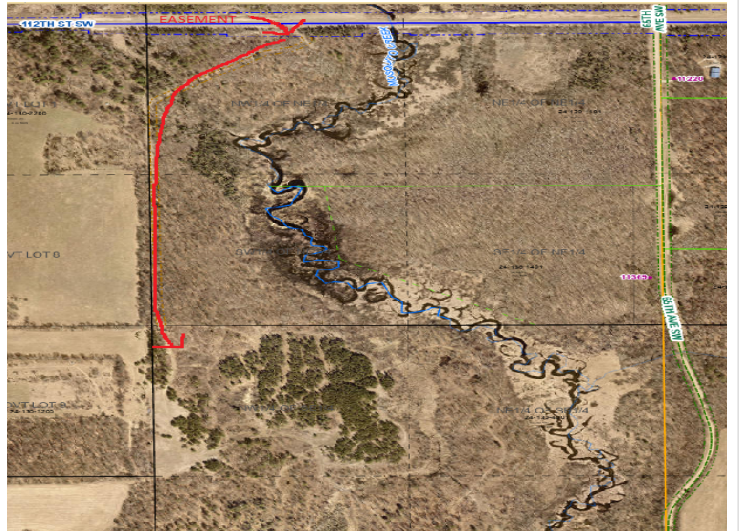
Affinity Real Estate - 600 Park Avenue South - Park Rapids MN 56470



website: [www.AffinityRealEstate.com](http://www.AffinityRealEstate.com) | email: [info@affinityrealestate.com](mailto:info@affinityrealestate.com) | office: 218-237-3333 | fax:218-237-3377



**\$599,900**  
MLS 7033683 Land  
TBD 65th Avenue  
Motley MN 56466



website: [www.AffinityRealEstate.com](http://www.AffinityRealEstate.com) | email: [info@affinityrealestate.com](mailto:info@affinityrealestate.com) | office: 218-237-3333 | fax:218-237-3377



**\$599,900**  
MLS 7033683 Land  
TBD 65th Avenue  
Motley MN 56466